

## Product datasheet for **CF504058**

### PSMA4 Mouse Monoclonal Antibody [Clone ID: OTI5D8]

#### Product data:

Product Type:	Primary Antibodies
Clone Name:	OTI5D8
Applications:	IHC, WB
Recommended Dilution:	WB 1:500~2000, IHC 1:150
Reactivity:	Human, Dog, Rat, Monkey, Mouse
Host:	Mouse
Isotype:	IgG2b
Clonality:	Monoclonal
Immunogen:	Full length human recombinant protein of human PSMA4(NP_002780) produced in HEK293T cell.
Formulation:	Lyophilized powder (original buffer 1X PBS, pH 7.3, 8% trehalose)
Reconstitution Method:	For reconstitution, we recommend adding 100uL distilled water to a final antibody concentration of about 1 mg/mL. To use this carrier-free antibody for conjugation experiment, we strongly recommend performing another round of desalting process. (OriGene recommends Zeba Spin Desalting Columns, 7KMWCO from Thermo Scientific)
Purification:	Purified from mouse ascites fluids or tissue culture supernatant by affinity chromatography (protein A/G)
Conjugation:	Unconjugated
Storage:	Store at -20°C as received.
Stability:	Stable for 12 months from date of receipt.
Predicted Protein Size:	29.3 kDa
Gene Name:	proteasome 20S subunit alpha 4
Database Link:	<a href="#">NP_002780</a> <a href="#">Entrez Gene 26441 Mouse</a> <a href="#">Entrez Gene 29671 Rat</a> <a href="#">Entrez Gene 100687556 Dog</a> <a href="#">Entrez Gene 710417 Monkey</a> <a href="#">Entrez Gene 5685 Human</a> <a href="#">P25789</a>



[View online »](#)

**Background:**

The proteasome is a multicatalytic proteinase complex with a highly ordered ring-shaped 20S core structure. The core structure is composed of 4 rings of 28 non-identical subunits; 2 rings are composed of 7 alpha subunits and 2 rings are composed of 7 beta subunits. Proteasomes are distributed throughout eukaryotic cells at a high concentration and cleave peptides in an ATP/ubiquitin-dependent process in a non-lysosomal pathway. An essential function of a modified proteasome, the immunoproteasome, is the processing of class I MHC peptides. This gene encodes a member of the peptidase T1A family, that is a 20S core alpha subunit. Three alternatively spliced transcript variants encoding different isoforms have been found for this gene. [provided by RefSeq]

**Synonyms:**

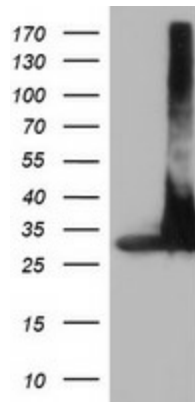
HC9; HsT17706; PSC9

**Protein Families:**

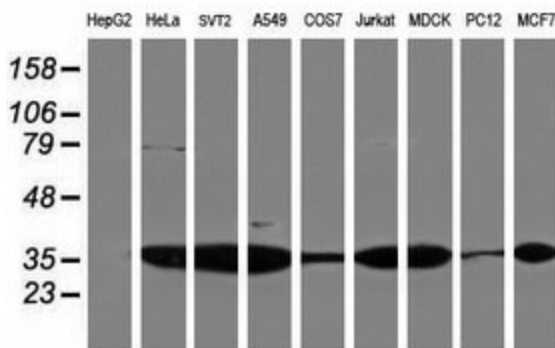
Druggable Genome, Protease

**Protein Pathways:**

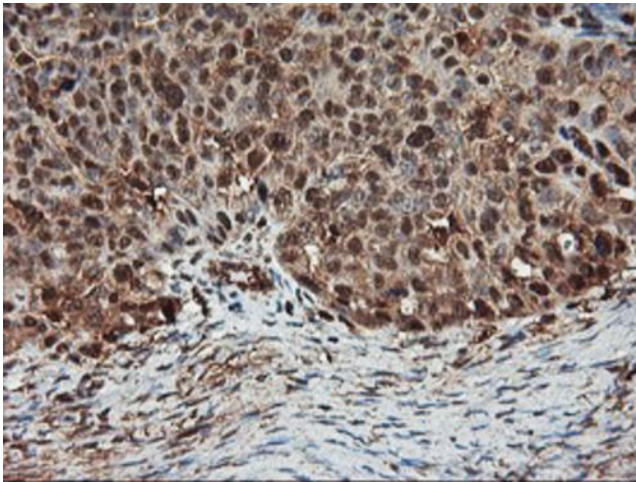
Proteasome

**Product images:**


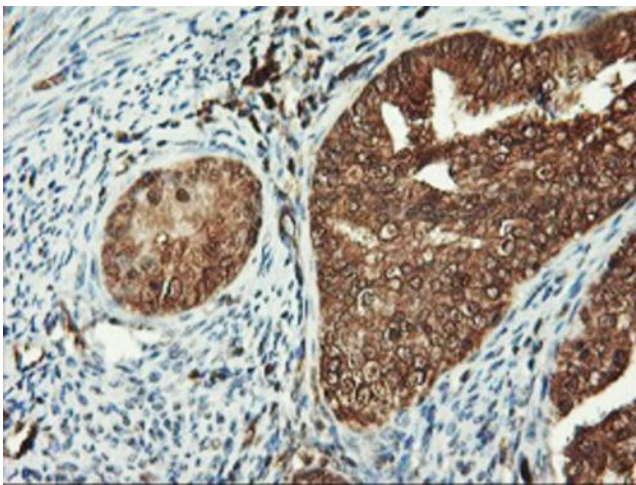
HEK293T cells were transfected with the pCMV6-ENTRY control (Left lane) or pCMV6-ENTRY PSMA4 ([RC202786], Right lane) cDNA for 48 hrs and lysed. Equivalent amounts of cell lysates (5 ug per lane) were separated by SDS-PAGE and immunoblotted with anti-PSMA4. Positive lysates [LY419117] (100ug) and [LC419117] (20ug) can be purchased separately from OriGene.



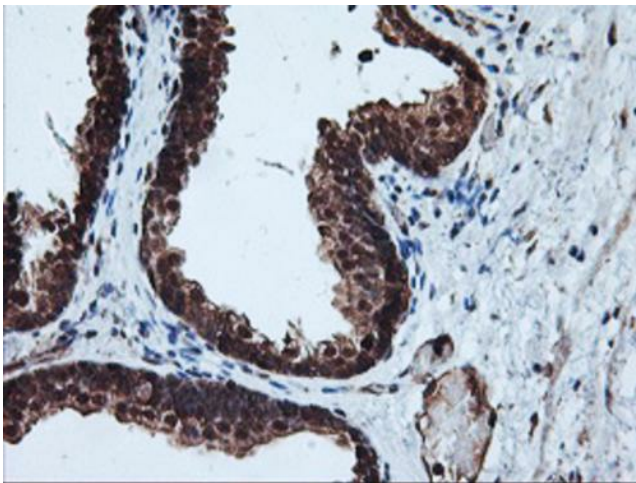
Western blot analysis of extracts (35ug) from 9 different cell lines by using anti-PSMA4 monoclonal antibody.



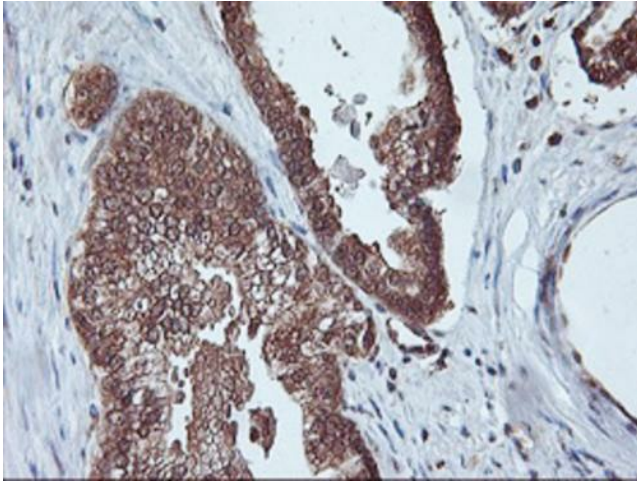
Immunohistochemical staining of paraffin-embedded Adenocarcinoma of Human ovary tissue using anti-PSMA4 mouse monoclonal antibody. (Heat-induced epitope retrieval by 10mM citric buffer, pH6.0, 100°C for 10min, [TA504058])



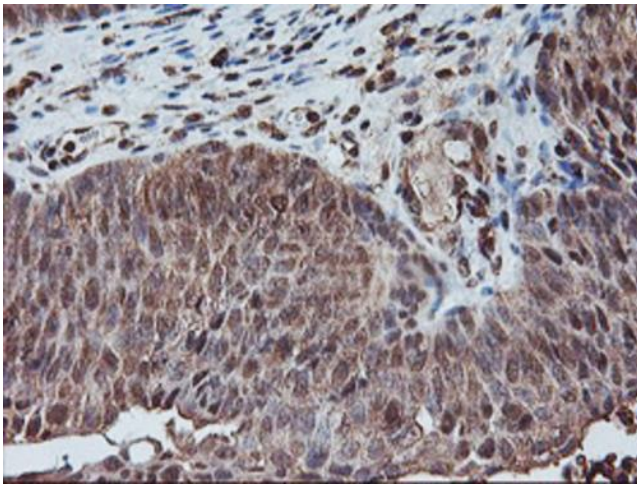
Immunohistochemical staining of paraffin-embedded Adenocarcinoma of Human endometrium tissue using anti-PSMA4 mouse monoclonal antibody. (Heat-induced epitope retrieval by 10mM citric buffer, pH6.0, 100°C for 10min, [TA504058])



Immunohistochemical staining of paraffin-embedded Human prostate tissue within the normal limits using anti-PSMA4 mouse monoclonal antibody. (Heat-induced epitope retrieval by 10mM citric buffer, pH6.0, 100°C for 10min, [TA504058])



Immunohistochemical staining of paraffin-embedded Carcinoma of Human prostate tissue using anti-PSMA4 mouse monoclonal antibody. (Heat-induced epitope retrieval by 10mM citric buffer, pH6.0, 100°C for 10min, [TA504058])



Immunohistochemical staining of paraffin-embedded Carcinoma of Human bladder tissue using anti-PSMA4 mouse monoclonal antibody. (Heat-induced epitope retrieval by 10mM citric buffer, pH6.0, 100°C for 10min, [TA504058])