

## Product datasheet for **CF504057**

### SIX1 Mouse Monoclonal Antibody [Clone ID: OTI1H4]

#### Product data:

Product Type:	Primary Antibodies
Clone Name:	OTI1H4
Applications:	WB
Recommended Dilution:	WB 1:2000
Reactivity:	Human, Mouse, Rat
Host:	Mouse
Isotype:	IgG1
Clonality:	Monoclonal
Immunogen:	Human recombinant protein fragment corresponding to amino acids 1-284 of human SIX1(NP_005973) produced in E.coli.
Formulation:	Lyophilized powder (original buffer 1X PBS, pH 7.3, 8% trehalose)
Reconstitution Method:	For reconstitution, we recommend adding 100uL distilled water to a final antibody concentration of about 1 mg/mL. To use this carrier-free antibody for conjugation experiment, we strongly recommend performing another round of desalting process. (OriGene recommends Zeba Spin Desalting Columns, 7KMWCO from Thermo Scientific)
Purification:	Purified from mouse ascites fluids or tissue culture supernatant by affinity chromatography (protein A/G)
Conjugation:	Unconjugated
Storage:	Store at -20°C as received.
Stability:	Stable for 12 months from date of receipt.
Predicted Protein Size:	32 kDa
Gene Name:	SIX homeobox 1
Database Link:	<a href="#">NP_005973</a> <a href="#">Entrez Gene 20471 Mouse</a> <a href="#">Entrez Gene 114634 Rat</a> <a href="#">Entrez Gene 6495 Human</a> <a href="#">Q15475</a>



[View online »](#)

**Background:**

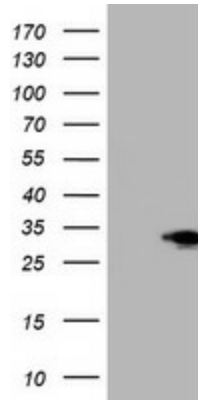
The protein encoded by this gene is a homeobox protein that is similar to the Drosophila 'sine oculis' gene product. This gene is found in a cluster of related genes on chromosome 14 and is thought to be involved in limb development. Defects in this gene are a cause of autosomal dominant deafness type 23 (DFNA23) and branchiootoc syndrome type 3 (BOS3). [provided by RefSeq]

**Synonyms:**

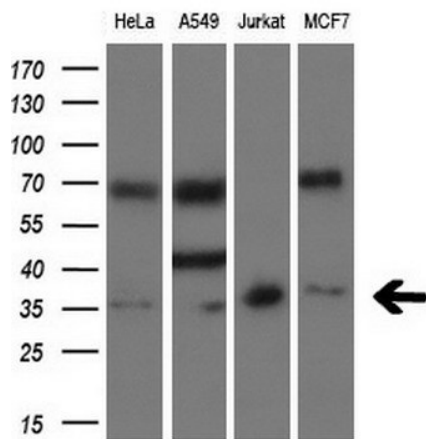
BOS3; DFNA23; TIP39

**Protein Families:**

Transcription Factors

**Product images:**


HEK293T cells were transfected with the pCMV6-ENTRY control (Cat# [PS100001], Left lane) or pCMV6-ENTRY SIX1 (Cat# [RC203465], Right lane) cDNA for 48 hrs and lysed. Equivalent amounts of cell lysates (5 ug per lane) were separated by SDS-PAGE and immunoblotted with anti-SIX1 (Cat# [TA504057]). Positive lysates [LY401814] (100ug) and [LC401814] (20ug) can be purchased separately from OriGene.



Western blot analysis of extracts (10ug) from 4 different cell lines by using anti-SIX1 monoclonal antibody at 1:200 dilution.