

Product datasheet for **CF504051**

SYNJ2BP Mouse Monoclonal Antibody [Clone ID: OTI3A9]

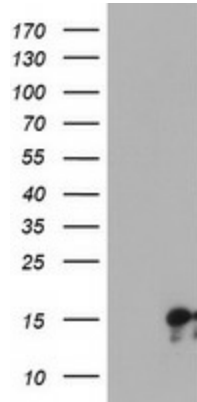
Product data:

| | |
|--------------------------------|--|
| Product Type: | Primary Antibodies |
| Clone Name: | OTI3A9 |
| Applications: | FC, WB |
| Recommended Dilution: | WB 1:1000~2000, FLOW 1:100 |
| Reactivity: | Human, Mouse, Rat |
| Host: | Mouse |
| Isotype: | IgG1 |
| Clonality: | Monoclonal |
| Immunogen: | Full length human recombinant protein of human SYNJ2BP(NP_060843) produced in HEK293T cell. |
| Formulation: | Lyophilized powder (original buffer 1X PBS, pH 7.3, 8% trehalose) |
| Reconstitution Method: | For reconstitution, we recommend adding 100uL distilled water to a final antibody concentration of about 1 mg/mL. To use this carrier-free antibody for conjugation experiment, we strongly recommend performing another round of desalting process. (OriGene recommends Zeba Spin Desalting Columns, 7KMWCO from Thermo Scientific) |
| Purification: | Purified from mouse ascites fluids or tissue culture supernatant by affinity chromatography (protein A/G) |
| Conjugation: | Unconjugated |
| Storage: | Store at -20°C as received. |
| Stability: | Stable for 12 months from date of receipt. |
| Predicted Protein Size: | 15.7 kDa |
| Gene Name: | synaptojanin 2 binding protein |
| Database Link: | NP_060843 Entrez Gene 55333 Human P57105 |
| Synonyms: | ARIP2; OMP25 |
| Protein Families: | Transmembrane |

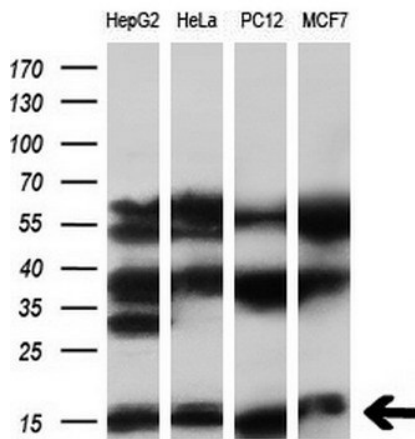


[View online »](#)

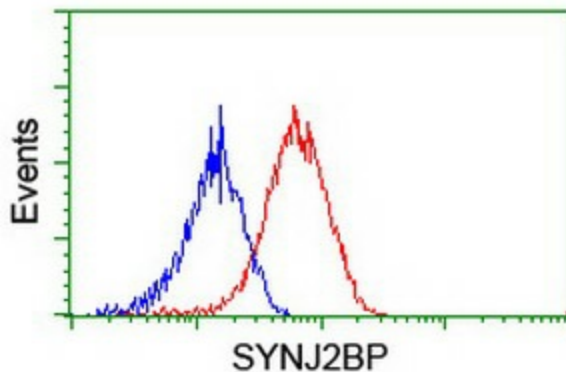
Product images:



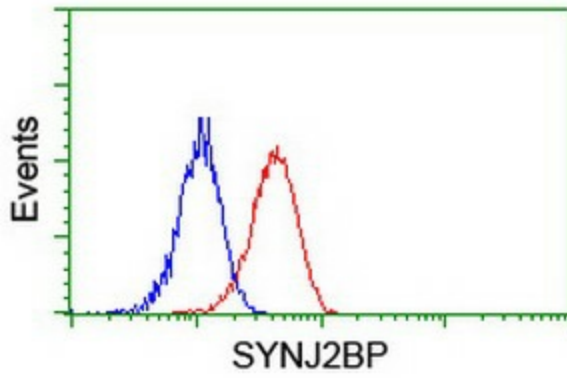
HEK293T cells were transfected with the pCMV6-ENTRY control (Cat# [PS100001], Left lane) or pCMV6-ENTRY SYNJ2BP (Cat# [RC202394], Right lane) cDNA for 48 hrs and lysed. Equivalent amounts of cell lysates (5 ug per lane) were separated by SDS-PAGE and immunoblotted with anti-SYNJ2BP (Cat# [TA504051]). Positive lysates [LY402678] (100ug) and [LC402678] (20ug) can be purchased separately from OriGene.



Western blot analysis of extracts (10ug) from 4 different cell lines by using anti-SYNJ2BP monoclonal antibody (1:200).



Flow cytometric Analysis of HeLa cells, using anti-SYNJ2BP antibody ([TA504051]), (Red), compared to a nonspecific negative control antibody, (Blue).



Flow cytometric Analysis of Jurkat cells, using anti-SYNJ2BP antibody ([TA504051]), (Red), compared to a nonspecific negative control antibody, (Blue).