

## Product datasheet for **CF503992**

### SDS Mouse Monoclonal Antibody [Clone ID: OTI4E1]

#### Product data:

Product Type:	Primary Antibodies
Clone Name:	OTI4E1
Applications:	FC, WB
Recommended Dilution:	WB 1:2000, FLOW 1:100
Reactivity:	Human
Host:	Mouse
Isotype:	IgG1
Clonality:	Monoclonal
Immunogen:	Full length human recombinant protein of human SDS(NP_006834) produced in HEK293T cell.
Formulation:	Lyophilized powder (original buffer 1X PBS, pH 7.3, 8% trehalose)
Reconstitution Method:	For reconstitution, we recommend adding 100uL distilled water to a final antibody concentration of about 1 mg/mL. To use this carrier-free antibody for conjugation experiment, we strongly recommend performing another round of desalting process. (OriGene recommends Zeba Spin Desalting Columns, 7KMWCO from Thermo Scientific)
Purification:	Purified from mouse ascites fluids or tissue culture supernatant by affinity chromatography (protein A/G)
Conjugation:	Unconjugated
Storage:	Store at -20°C as received.
Stability:	Stable for 12 months from date of receipt.
Predicted Protein Size:	34.4 kDa
Gene Name:	serine dehydratase
Database Link:	<a href="#">NP_006834</a> <a href="#">Entrez Gene 10993 Human</a> <a href="#">P20132</a>



[View online »](#)

**Background:**

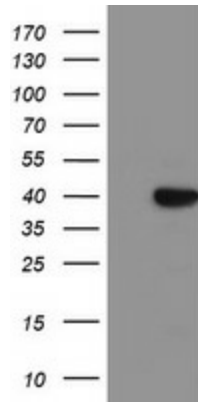
This gene encodes one of three enzymes that are involved in metabolizing serine and glycine. L-serine dehydratase converts L-serine to pyruvate and ammonia and requires pyridoxal phosphate as a cofactor. The encoded protein can also metabolize threonine to NH<sub>4</sub><sup>+</sup> and 2-ketobutyrate. The encoded protein is found predominantly in the liver. [provided by RefSeq]. COMPLETENESS: complete on the 3' end.

**Synonyms:**

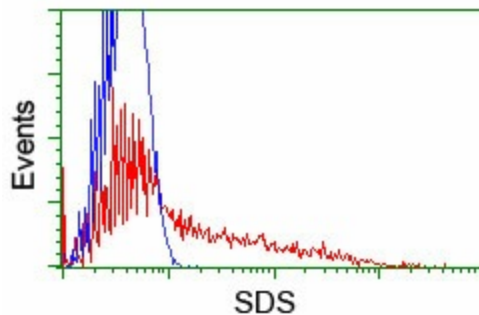
SDH

**Protein Pathways:**

Cysteine and methionine metabolism, Glycine, serine and threonine metabolism, Metabolic pathways

**Product images:**


HEK293T cells were transfected with the pCMV6-ENTRY control (Left lane) or pCMV6-ENTRY SDS ([RC217814], Right lane) cDNA for 48 hrs and lysed. Equivalent amounts of cell lysates (5 ug per lane) were separated by SDS-PAGE and immunoblotted with anti-SDS. Positive lysates [LY416388] (100ug) and [LC416388] (20ug) can be purchased separately from OriGene.



HEK293T cells transfected with either [RC217814] overexpress plasmid (Red) or empty vector control plasmid (Blue) were immunostained by anti-SDS antibody ([TA503992]), and then analyzed by flow cytometry.