

## Product datasheet for **CF503963**

### Aminopeptidase A (ENPEP) Mouse Monoclonal Antibody [Clone ID: OTI1C4]

#### Product data:

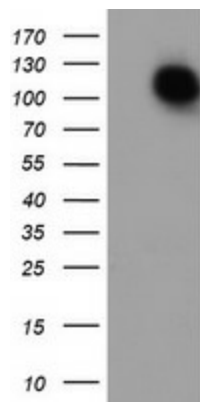
Product Type:	Primary Antibodies
Clone Name:	OTI1C4
Applications:	FC, IF, IHC, WB
Recommended Dilution:	WB 1:500, IHC 1:150, IF 1:100, FLOW 1:100
Reactivity:	Human
Host:	Mouse
Isotype:	IgG1
Clonality:	Monoclonal
Immunogen:	Full length human recombinant protein of human ENPEP(NP_001968) produced in HEK293T cell.
Formulation:	Lyophilized powder (original buffer 1X PBS, pH 7.3, 8% trehalose)
Reconstitution Method:	For reconstitution, we recommend adding 100uL distilled water to a final antibody concentration of about 1 mg/mL. To use this carrier-free antibody for conjugation experiment, we strongly recommend performing another round of desalting process. (OriGene recommends Zeba Spin Desalting Columns, 7KMWCO from Thermo Scientific)
Purification:	Purified from mouse ascites fluids or tissue culture supernatant by affinity chromatography (protein A/G)
Conjugation:	Unconjugated
Storage:	Store at -20°C as received.
Stability:	Stable for 12 months from date of receipt.
Predicted Protein Size:	109.1 kDa
Gene Name:	glutamyl aminopeptidase
Database Link:	<a href="#">NP_001968</a> <a href="#">Entrez Gene 2028 Human Q07075</a>
Synonyms:	APA; CD249; gp160
Protein Families:	Druggable Genome, ES Cell Differentiation/IPS, Protease, Transmembrane



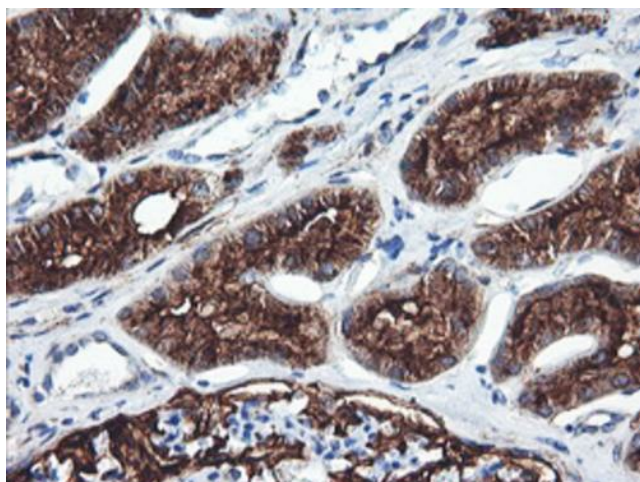
[View online »](#)

Protein Pathways: Renin-angiotensin system

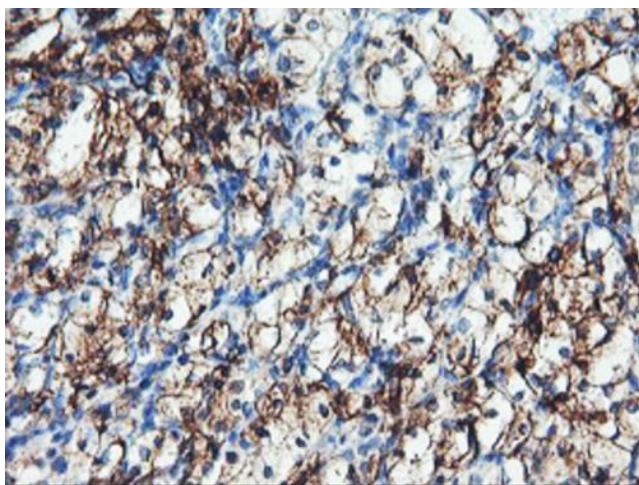
### Product images:



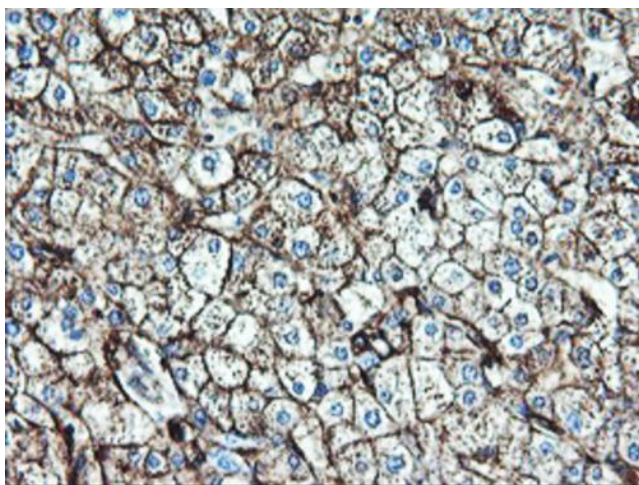
HEK293T cells were transfected with the pCMV6-ENTRY control (Left lane) or pCMV6-ENTRY ENPEP ([RC210521], Right lane) cDNA for 48 hrs and lysed. Equivalent amounts of cell lysates (5 ug per lane) were separated by SDS-PAGE and immunoblotted with anti-ENPEP. Positive lysates [LY419610] (100ug) and [LC419610] (20ug) can be purchased separately from OriGene.



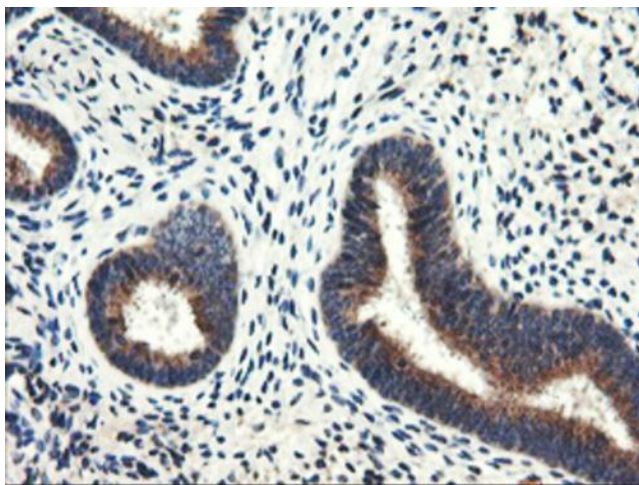
Immunohistochemical staining of paraffin-embedded Human Kidney tissue within the normal limits using anti-ENPEP mouse monoclonal antibody. Heat-induced epitope retrieval by EDTA solution buffer pH 8.0 at 120°C for 3 min.



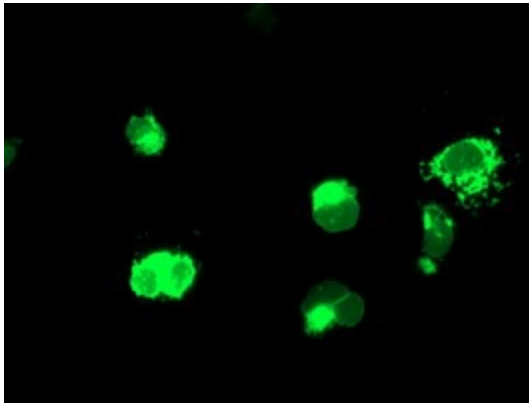
Immunohistochemical staining of paraffin-embedded Carcinoma of Human kidney tissue using anti-ENPEP mouse monoclonal antibody. Heat-induced epitope retrieval by EDTA solution buffer pH 8.0 at 120°C for 3 min.



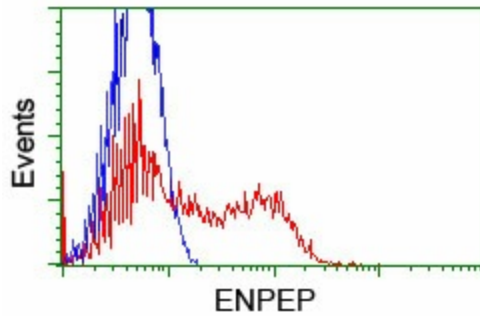
Immunohistochemical staining of paraffin-embedded Human liver tissue within the normal limits using anti-ENPEP mouse monoclonal antibody. Heat-induced epitope retrieval by EDTA solution buffer pH 8.0 at 120°C for 3 min.



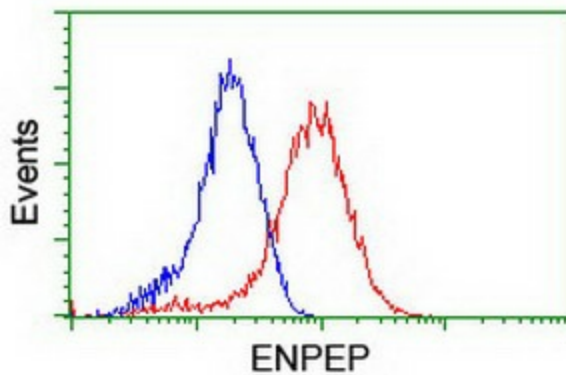
Immunohistochemical staining of paraffin-embedded Human endometrium tissue within the normal limits using anti-ENPEP mouse monoclonal antibody. Heat-induced epitope retrieval by EDTA solution buffer pH 8.0 at 120°C for 3 min.



Anti-ENPEP mouse monoclonal antibody ([TA503963]) immunofluorescent staining of COS7 cells transiently transfected by pCMV6-ENTRY ENPEP ([RC210521]).



HEK293T cells transfected with either [RC210521] overexpress plasmid (Red) or empty vector control plasmid (Blue) were immunostained by anti-ENPEP antibody ([TA503963]), and then analyzed by flow cytometry.



Flow cytometric Analysis of HeLa cells, using anti-ENPEP antibody ([TA503963]), (Red), compared to a nonspecific negative control antibody, (Blue).