

## Product datasheet for **CF503933**

### N Cadherin (CDH2) Mouse Monoclonal Antibody [Clone ID: OTI2G7]

#### Product data:

Product Type:	Primary Antibodies
Clone Name:	OTI2G7
Applications:	FC, IHC, WB
Recommended Dilution:	WB 1:500~2000, IHC 1:150, FLOW 1:100
Reactivity:	Human, Dog, Monkey, Mouse, Rat
Host:	Mouse
Isotype:	IgG2a
Clonality:	Monoclonal
Immunogen:	Full length human recombinant protein of human CDH2(NP_001783) produced in HEK293T cell.
Formulation:	Lyophilized powder (original buffer 1X PBS, pH 7.3, 8% trehalose)
Reconstitution Method:	For reconstitution, we recommend adding 100uL distilled water to a final antibody concentration of about 1 mg/mL. To use this carrier-free antibody for conjugation experiment, we strongly recommend performing another round of desalting process. (OriGene recommends Zeba Spin Desalting Columns, 7KMWCO from Thermo Scientific)
Purification:	Purified from mouse ascites fluids or tissue culture supernatant by affinity chromatography (protein A/G)
Conjugation:	Unconjugated
Storage:	Store at -20°C as received.
Stability:	Stable for 12 months from date of receipt.
Predicted Protein Size:	97.2 kDa
Gene Name:	cadherin 2
Database Link:	<a href="#">NP_001783</a> <a href="#">Entrez Gene 12558 Mouse</a> <a href="#">Entrez Gene 83501 Rat</a> <a href="#">Entrez Gene 480169 Dog</a> <a href="#">Entrez Gene 711526 Monkey</a> <a href="#">Entrez Gene 1000 Human</a> <a href="#">P19022</a>



[View online »](#)

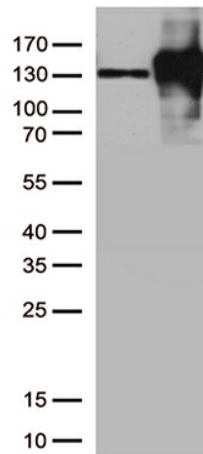
**Background:** This gene is a classical cadherin from the cadherin superfamily. The encoded protein is a calcium dependent cell-cell adhesion glycoprotein comprised of five extracellular cadherin repeats, a transmembrane region and a highly conserved cytoplasmic tail. The protein functions during gastrulation and is required for establishment of left-right asymmetry. At certain central nervous system synapses, presynaptic to postsynaptic adhesion is mediated at least in part by this gene product. [provided by RefSeq]

**Synonyms:** CD325; CDHN; CDw325; NCAD

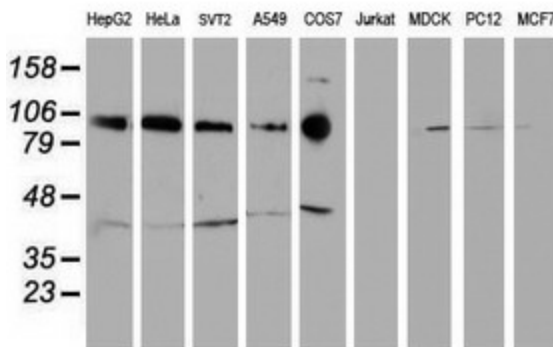
**Protein Families:** Druggable Genome, ES Cell Differentiation/IPS, Transmembrane

**Protein Pathways:** Arrhythmogenic right ventricular cardiomyopathy (ARVC), Cell adhesion molecules (CAMs)

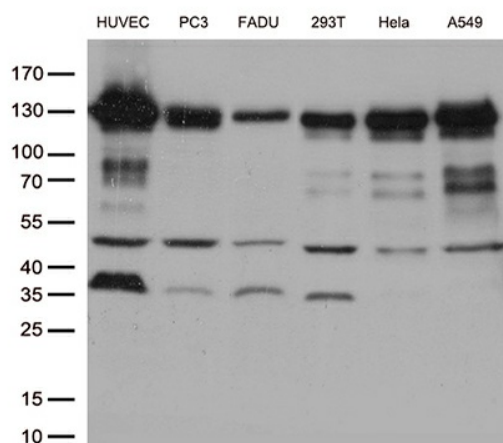
## Product images:



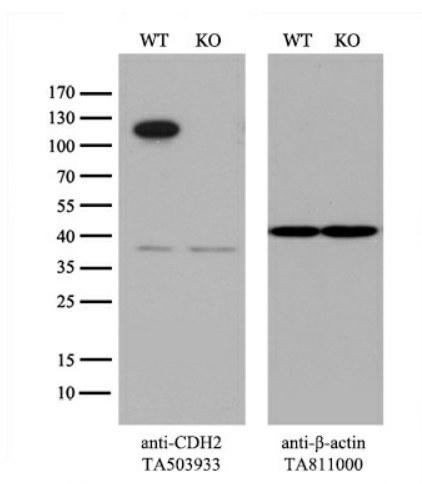
HEK293T cells were transfected with the pCMV6-ENTRY control (Cat# [PS100001], Left lane) or pCMV6-ENTRY CDH2 (Cat# [RC207170], Right lane) cDNA for 48 hrs and lysed. Equivalent amounts of cell lysates (5 ug per lane) were separated by SDS-PAGE and immunoblotted with anti-CDH2 (Cat# [TA503933]). Positive lysates [LY419743] (100ug) and [LC419743] (20ug) can be purchased separately from OriGene.



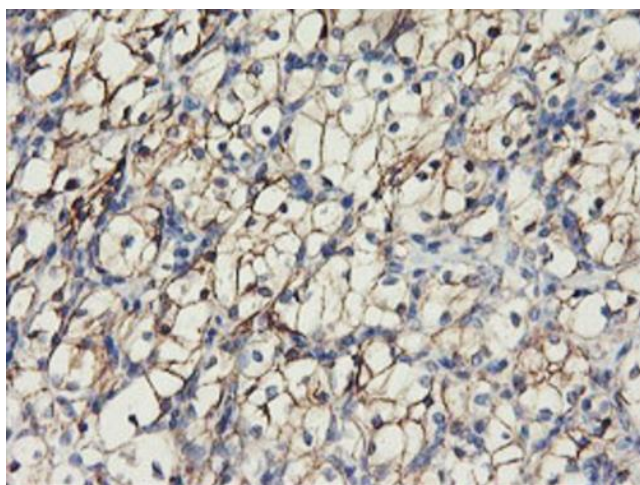
Western blot analysis of extracts (35ug) from 9 different cell lines by using anti-CDH2 monoclonal antibody.



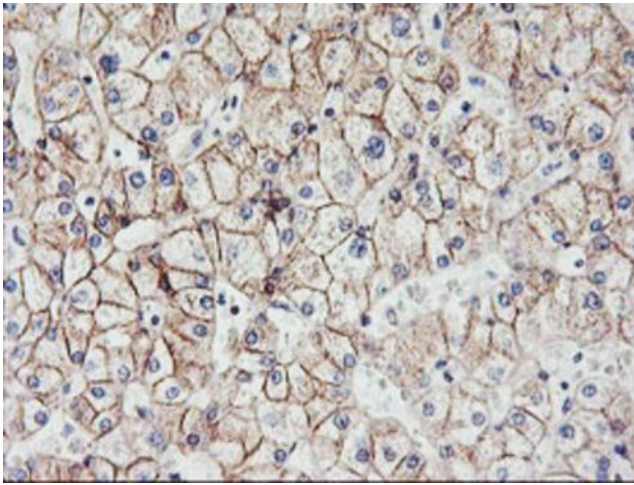
Western blot analysis of extracts (35ug) from 6 cell lines by using anti-CDH2 monoclonal antibody (1:500).



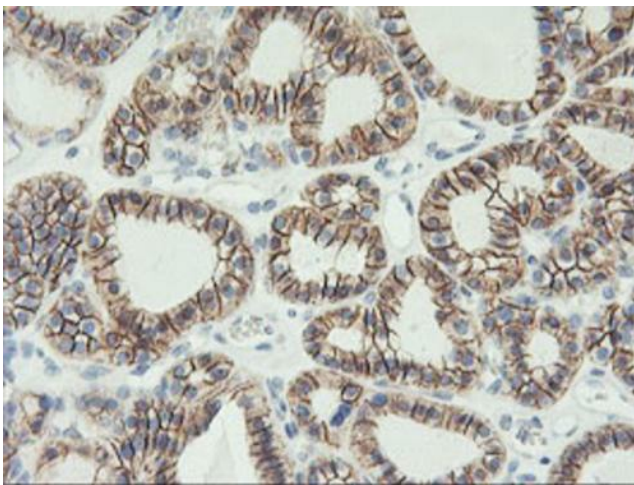
Equivalent amounts of cell lysates (10 ug per lane) of wild-type 293T cells (WT, Cat# LC810293T) and CDH2-Knockout 293T cells (KO, Cat# LC840285) were separated by SDS-PAGE and immunoblotted with anti-CDH2 monoclonal antibody [TA503933], (1:500). Then the blotted membrane was stripped and reprobed with anti-actin antibody ([TA811000]) as a loading control.



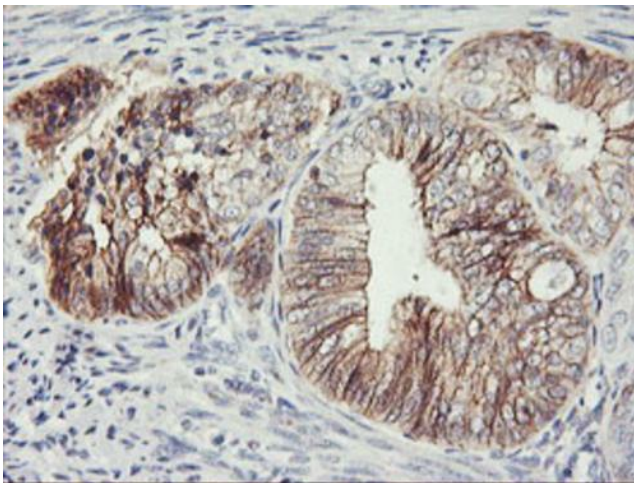
Immunohistochemical staining of paraffin-embedded Carcinoma of Human kidney tissue using anti-CDH2 mouse monoclonal antibody. Heat-induced epitope retrieval by EDTA solution buffer pH 8.0 at 120°C for 3 min.



Immunohistochemical staining of paraffin-embedded Human liver tissue within the normal limits using anti-CDH2 mouse monoclonal antibody. Heat-induced epitope retrieval by EDTA solution buffer pH 8.0 at 120°C for 3 min.

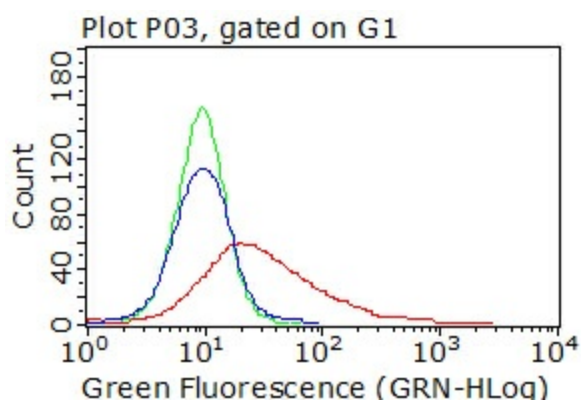


Immunohistochemical staining of paraffin-embedded Carcinoma of Human thyroid tissue using anti-CDH2 mouse monoclonal antibody. Heat-induced epitope retrieval by EDTA solution buffer pH 8.0 at 120°C for 3 min.

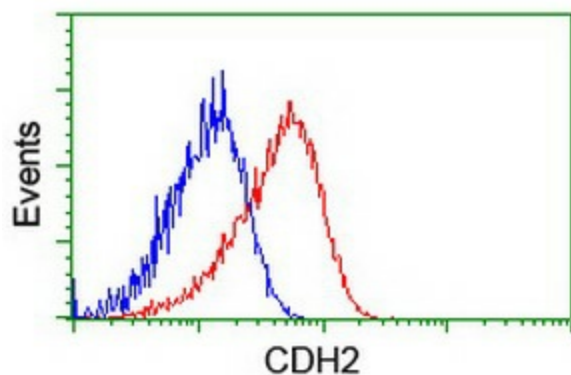


Immunohistochemical staining of paraffin-embedded Adenocarcinoma of Human endometrium tissue using anti-CDH2 mouse monoclonal antibody. Heat-induced epitope retrieval by EDTA solution buffer pH 8.0 at 120°C for 3 min.





Living HEK293T cells transfected with either [RC207170] plasmid (red) or empty vector (blue) were immunostained by anti-CDH2 antibody ([TA503933]) or isotype control antibody (green), and then analyzed by flow cytometry (1:50).



Flow cytometric Analysis of Hela cells, using anti-CDH2 antibody ([TA503933]), (Red), compared to a nonspecific negative control antibody, (Blue).