

## Product datasheet for **CF503891**

### **RHOD Mouse Monoclonal Antibody [Clone ID: OTI2F7]**

#### **Product data:**

<b>Product Type:</b>	Primary Antibodies
<b>Clone Name:</b>	OTI2F7
<b>Applications:</b>	FC, IF, WB
<b>Recommended Dilution:</b>	WB 1:2000, IF 1:100, FLOW 1:100
<b>Reactivity:</b>	Human
<b>Host:</b>	Mouse
<b>Isotype:</b>	IgG2b
<b>Clonality:</b>	Monoclonal
<b>Immunogen:</b>	Full length human recombinant protein of human RHOD(NP_055393) produced in HEK293T cell.
<b>Formulation:</b>	Lyophilized powder (original buffer 1X PBS, pH 7.3, 8% trehalose)
<b>Reconstitution Method:</b>	For reconstitution, we recommend adding 100uL distilled water to a final antibody concentration of about 1 mg/mL. To use this carrier-free antibody for conjugation experiment, we strongly recommend performing another round of desalting process. (OriGene recommends Zeba Spin Desalting Columns, 7KMWCO from Thermo Scientific)
<b>Purification:</b>	Purified from mouse ascites fluids or tissue culture supernatant by affinity chromatography (protein A/G)
<b>Conjugation:</b>	Unconjugated
<b>Storage:</b>	Store at -20°C as received.
<b>Stability:</b>	Stable for 12 months from date of receipt.
<b>Predicted Protein Size:</b>	23.3 kDa
<b>Gene Name:</b>	ras homolog family member D
<b>Database Link:</b>	<a href="#">NP_055393</a> <a href="#">Entrez Gene 29984 Human</a> <a href="#">O00212</a>



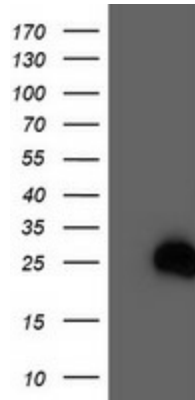
[View online »](#)

**Background:** Ras homolog, or Rho, proteins interact with protein kinases and may serve as targets for activated GTPase. They play a critical role in muscle differentiation. The protein encoded by this gene binds GTP and is a member of the small GTPase superfamily. It is involved in endosome dynamics and reorganization of the actin cytoskeleton, and it may coordinate membrane transport with the function of the cytoskeleton. [provided by RefSeq, Jul

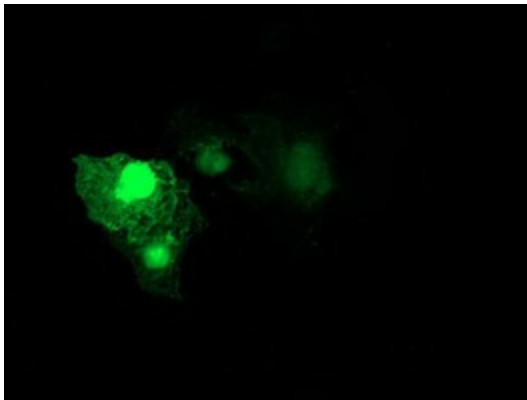
**Synonyms:** ARHD; Rho; RHOHP1; RHOM

**Protein Pathways:** Axon guidance

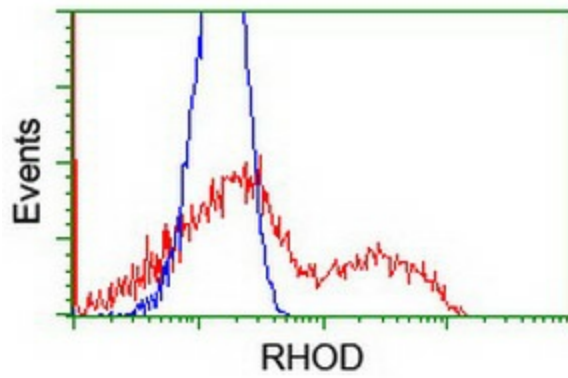
**Product images:**



HEK293T cells were transfected with the pCMV6-ENTRY control (Cat# [PS100001], Left lane) or pCMV6-ENTRY RHOD (Cat# [RC201722], Right lane) cDNA for 48 hrs and lysed. Equivalent amounts of cell lysates (5 ug per lane) were separated by SDS-PAGE and immunoblotted with anti-RHOD (Cat# [TA503891]). Positive lysates [LY415197] (100ug) and [LC415197] (20ug) can be purchased separately from OriGene.



Anti-RHOD mouse monoclonal antibody ([TA503891]) immunofluorescent staining of COS7 cells transiently transfected by pCMV6-ENTRY RHOD ([RC201722]).



HEK293T cells transfected with either [RC201722] overexpress plasmid (Red) or empty vector control plasmid (Blue) were immunostained by anti-RHOD antibody ([TA503891]), and then analyzed by flow cytometry.