

Product datasheet for **CF503885**

ERp72 (PDIA4) Mouse Monoclonal Antibody [Clone ID: OTI2B11]

Product data:

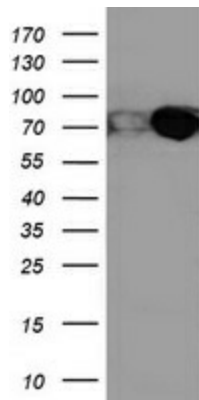
| | |
|-------------------------|--------------------------------------------------------------------------------------------------------------------------------------------------------------------------------------------------------------------------------------------------------------------------------------------------------------------------------------|
| Product Type: | Primary Antibodies |
| Clone Name: | OTI2B11 |
| Applications: | IF, WB |
| Recommended Dilution: | WB 1:2000, IF 1:100 |
| Reactivity: | Human, Mouse, Rat |
| Host: | Mouse |
| Isotype: | IgG1 |
| Clonality: | Monoclonal |
| Immunogen: | Full length human recombinant protein of human PDIA4(NP_004902) produced in HEK293T cell. |
| Formulation: | Lyophilized powder (original buffer 1X PBS, pH 7.3, 8% trehalose) |
| Reconstitution Method: | For reconstitution, we recommend adding 100uL distilled water to a final antibody concentration of about 1 mg/mL. To use this carrier-free antibody for conjugation experiment, we strongly recommend performing another round of desalting process. (OriGene recommends Zeba Spin Desalting Columns, 7KMWCO from Thermo Scientific) |
| Purification: | Purified from mouse ascites fluids or tissue culture supernatant by affinity chromatography (protein A/G) |
| Conjugation: | Unconjugated |
| Storage: | Store at -20°C as received. |
| Stability: | Stable for 12 months from date of receipt. |
| Predicted Protein Size: | 72.8 kDa |
| Gene Name: | protein disulfide isomerase family A member 4 |
| Database Link: | NP_004902 Entrez Gene 12304 Mouse Entrez Gene 116598 Rat Entrez Gene 9601 Human P13667 |
| Synonyms: | ERp-72; ERP70; ERP72 |
| Protein Families: | Druggable Genome, Transmembrane |



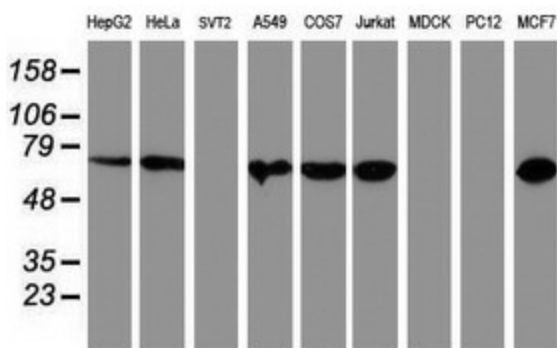
[View online »](#)

Protein Pathways: *Vibrio cholerae* infection

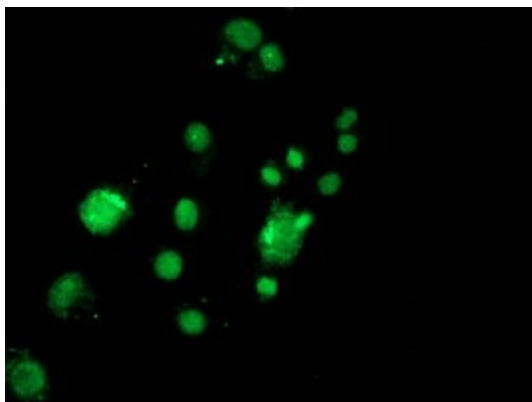
Product images:



HEK293T cells were transfected with the pCMV6-ENTRY control (Left lane) or pCMV6-ENTRY PDIA4 ([RC204041], Right lane) cDNA for 48 hrs and lysed. Equivalent amounts of cell lysates (5 ug per lane) were separated by SDS-PAGE and immunoblotted with anti-PDIA4. Positive lysates [LY401531] (100ug) and [LC401531] (20ug) can be purchased separately from OriGene.



Western blot analysis of extracts (35ug) from 9 different cell lines by using anti-PDIA4 monoclonal antibody (HepG2: human; HeLa: human; SVT2: mouse; A549: human; COS7: monkey; Jurkat: human; MDCK: canine; PC12: rat; MCF7: human).



Anti-PDIA4 mouse monoclonal antibody ([TA503885]) immunofluorescent staining of COS7 cells transiently transfected by pCMV6-ENTRY PDIA4 ([RC204041]).