

Product datasheet for **CF503817**

HARS2 Mouse Monoclonal Antibody [Clone ID: OT15A9]

Product data:

Product Type:	Primary Antibodies
Clone Name:	OT15A9
Applications:	FC, IF, IHC, WB
Recommended Dilution:	WB 1:500, IHC 1:150, IF 1:100, FLOW 1:100
Reactivity:	Human
Host:	Mouse
Isotype:	IgG1
Clonality:	Monoclonal
Immunogen:	Full length human recombinant protein of human HARS2(NP_036340) produced in HEK293T cell.
Formulation:	Lyophilized powder (original buffer 1X PBS, pH 7.3, 8% trehalose)
Reconstitution Method:	For reconstitution, we recommend adding 100uL distilled water to a final antibody concentration of about 1 mg/mL. To use this carrier-free antibody for conjugation experiment, we strongly recommend performing another round of desalting process. (OriGene recommends Zeba Spin Desalting Columns, 7KMWCO from Thermo Scientific)
Purification:	Purified from mouse ascites fluids or tissue culture supernatant by affinity chromatography (protein A/G)
Storage:	Store at -20°C as received.
Stability:	Stable for 12 months from date of receipt.
Predicted Protein Size:	53.3 kDa
Gene Name:	Homo sapiens histidyl-tRNA synthetase 2, mitochondrial (HARS2), transcript variant 1, mRNA; nuclear gene for mitochondrial product.
Database Link:	NP_036340 Entrez Gene 23438 Human



[View online »](#)

Background:

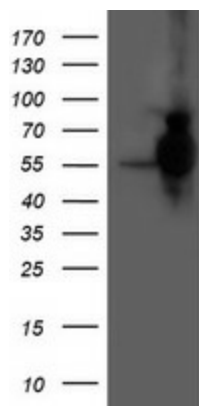
Aminoacyl-tRNA synthetases are a class of enzymes that charge tRNAs with their cognate amino acids. The protein encoded by this gene is an enzyme belonging to the class II family of aminoacyl-tRNA synthetases. Functioning in the synthesis of histidyl-transfer RNA, the enzyme plays an accessory role in the regulation of protein biosynthesis. The gene is located in a head-to-head orientation with HARS on chromosome five, where the homologous genes share a bidirectional promoter. [provided by RefSeq]. COMPLETENESS: full length.

Synonyms:

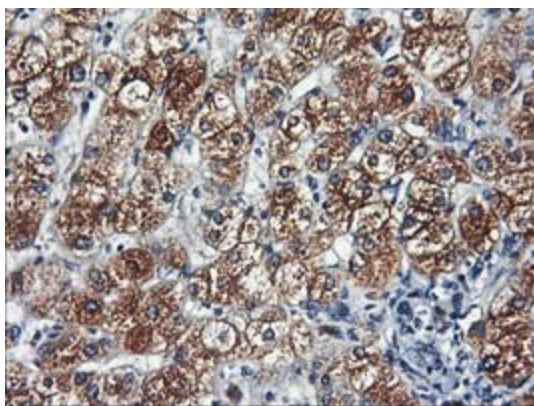
HARSL; HARSR; HO3; PRLTS2

Protein Pathways:

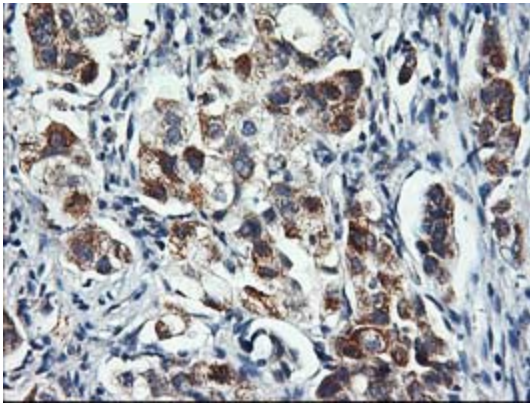
Aminoacyl-tRNA biosynthesis

Product images:

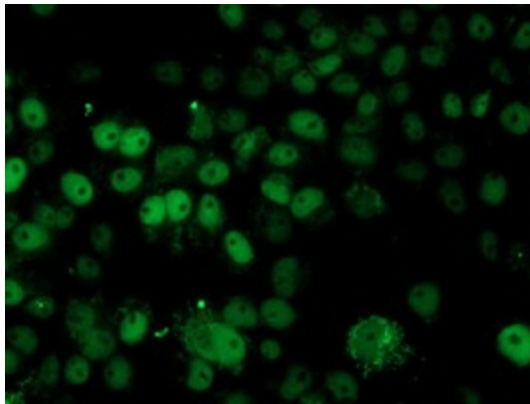
HEK293T cells were transfected with the pCMV6-ENTRY control (Left lane) or pCMV6-ENTRY HARS2 ([RC204925], Right lane) cDNA for 48 hrs and lysed. Equivalent amounts of cell lysates (5 ug per lane) were separated by SDS-PAGE and immunoblotted with anti-HARS2. Positive lysates [LY415917] (100ug) and [LC415917] (20ug) can be purchased separately from OriGene.



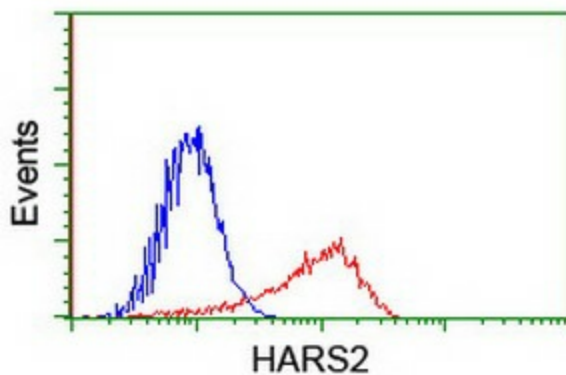
Immunohistochemical staining of paraffin-embedded Human liver tissue within the normal limits using anti-HARS2 mouse monoclonal antibody. (Heat-induced epitope retrieval by 10mM citric buffer, pH6.0, 100°C for 10min, [TA503817])



Immunohistochemical staining of paraffin-embedded Carcinoma of Human lung tissue using anti-HARS2 mouse monoclonal antibody. (Heat-induced epitope retrieval by 10mM citric buffer, pH6.0, 100°C for 10min, [TA503817])



Anti-HARS2 mouse monoclonal antibody ([TA503817]) immunofluorescent staining of COS7 cells transiently transfected by pCMV6-ENTRY HARS2 ([RC204925]).



HEK293T cells transfected with either [RC204925] overexpress plasmid (Red) or empty vector control plasmid (Blue) were immunostained by anti-HARS2 antibody ([TA503817]), and then analyzed by flow cytometry.