

Product datasheet for **CF503793**

Lipoprotein lipase (LPL) Mouse Monoclonal Antibody [Clone ID: OTI3A10]

Product data:

Product Type:	Primary Antibodies
Clone Name:	OTI3A10
Applications:	FC, IHC, WB
Recommended Dilution:	WB 1:500, IHC 1:150, FLOW 1:100
Reactivity:	Human, Mouse, Rat
Host:	Mouse
Isotype:	IgG1
Clonality:	Monoclonal
Immunogen:	Human recombinant protein fragment corresponding to amino acids 28-475 of human LPL(NP_000228) produced in HEK293T.
Formulation:	Lyophilized powder (original buffer 1X PBS, pH 7.3, 8% trehalose)
Reconstitution Method:	For reconstitution, we recommend adding 100uL distilled water to a final antibody concentration of about 1 mg/mL. To use this carrier-free antibody for conjugation experiment, we strongly recommend performing another round of desalting process. (OriGene recommends Zeba Spin Desalting Columns, 7KMWCO from Thermo Scientific)
Purification:	Purified from mouse ascites fluids or tissue culture supernatant by affinity chromatography (protein A/G)
Storage:	Store at -20°C as received.
Stability:	Stable for 12 months from date of receipt.
Predicted Protein Size:	50.3 kDa
Gene Name:	Homo sapiens lipoprotein lipase (LPL), mRNA.
Database Link:	NP_000228 Entrez Gene 16956 MouseEntrez Gene 24539 RatEntrez Gene 4023 Human
Background:	LPL encodes lipoprotein lipase, which is expressed in heart, muscle, and adipose tissue. LPL functions as a homodimer, and has the dual functions of triglyceride hydrolase and ligand/bridging factor for receptor-mediated lipoprotein uptake. Severe mutations that cause LPL deficiency result in type I hyperlipoproteinemia, while less extreme mutations in LPL are linked to many disorders of lipoprotein metabolism. [provided by RefSeq]
Synonyms:	HDLQC11; LIPD

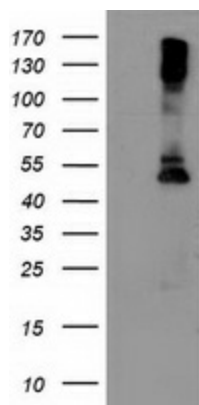


[View online »](#)

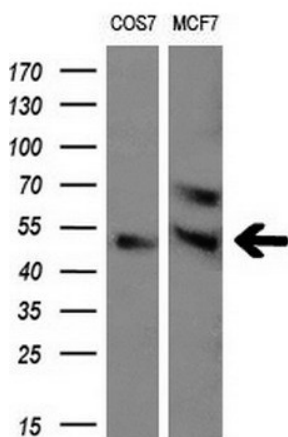
Protein Families: Druggable Genome

Protein Pathways: Alzheimer's disease, Glycerolipid metabolism, PPAR signaling pathway

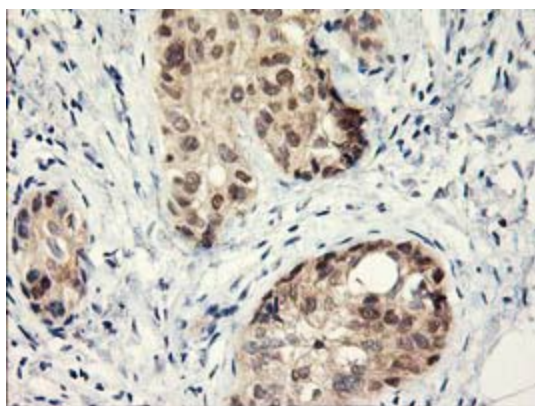
Product images:



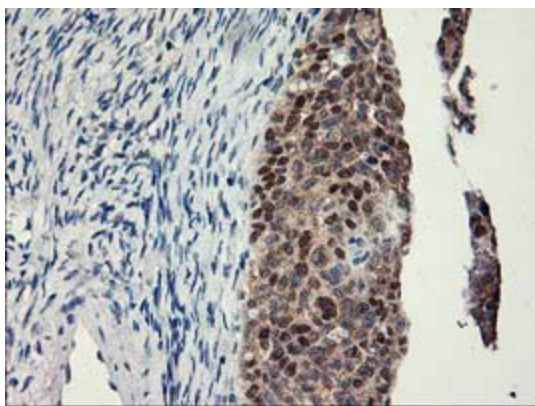
HEK293T cells were transfected with the pCMV6-ENTRY control (Left lane) or pCMV6-ENTRY LPL ([RC203766], Right lane) cDNA for 48 hrs and lysed. Equivalent amounts of cell lysates (5 ug per lane) were separated by SDS-PAGE and immunoblotted with anti-LPL. Positive lysates [LY400089] (100ug) and [LC400089] (20ug) can be purchased separately from OriGene.



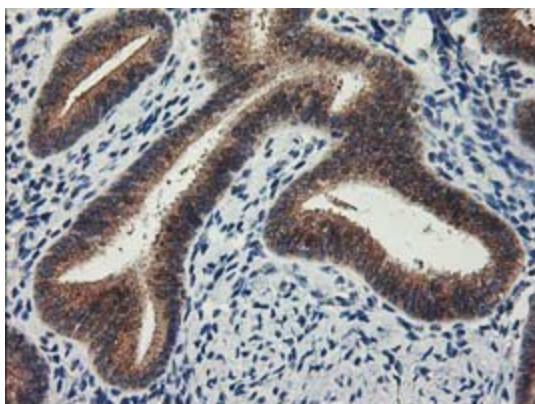
Western blot analysis of extracts (10ug) from 2 different cell lines by using anti-LPL monoclonal antibody (1:200).



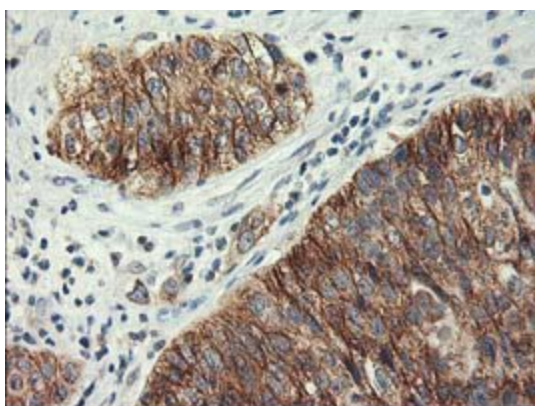
Immunohistochemical staining of paraffin-embedded Adenocarcinoma of Human breast tissue using anti-LPL mouse monoclonal antibody. (Heat-induced epitope retrieval by 10mM citric buffer, pH6.0, 100°C for 10min, [TA503793])



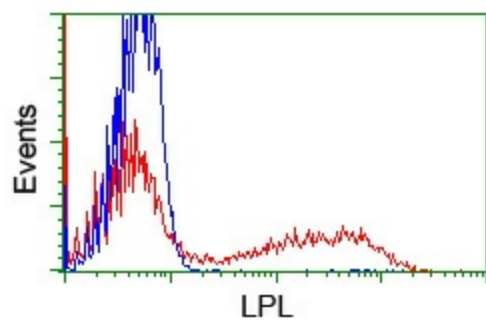
Immunohistochemical staining of paraffin-embedded Adenocarcinoma of Human ovary tissue using anti-LPL mouse monoclonal antibody. (Heat-induced epitope retrieval by 10mM citric buffer, pH6.0, 100°C for 10min, [TA503793])



Immunohistochemical staining of paraffin-embedded Human endometrium tissue within the normal limits using anti-LPL mouse monoclonal antibody. (Heat-induced epitope retrieval by 10mM citric buffer, pH6.0, 100°C for 10min, [TA503793])



Immunohistochemical staining of paraffin-embedded Carcinoma of Human bladder tissue using anti-LPL mouse monoclonal antibody. (Heat-induced epitope retrieval by 10mM citric buffer, pH6.0, 100°C for 10min, [TA503793])



HEK293T cells transfected with either [RC203766] overexpress plasmid (Red) or empty vector control plasmid (Blue) were immunostained by anti-LPL antibody ([TA503793]), and then analyzed by flow cytometry.