

## Product datasheet for **CF503789**

### Lipoprotein lipase (LPL) Mouse Monoclonal Antibody [Clone ID: OTI5C6]

#### Product data:

Product Type:	Primary Antibodies
Clone Name:	OTI5C6
Applications:	IF, IHC, WB
Recommended Dilution:	WB 1:2000, IHC 1:150, IF 1:100
Reactivity:	Human, Mouse, Rat
Host:	Mouse
Isotype:	IgG1
Clonality:	Monoclonal
Immunogen:	Human recombinant protein fragment corresponding to amino acids 28-475 of human LPL(NP_000228) produced in HEK293T cell.
Formulation:	Lyophilized powder (original buffer 1X PBS, pH 7.3, 8% trehalose)
Reconstitution Method:	For reconstitution, we recommend adding 100uL distilled water to a final antibody concentration of about 1 mg/mL. To use this carrier-free antibody for conjugation experiment, we strongly recommend performing another round of desalting process. (OriGene recommends Zeba Spin Desalting Columns, 7KMWCO from Thermo Scientific)
Purification:	Purified from mouse ascites fluids or tissue culture supernatant by affinity chromatography (protein A/G)
Conjugation:	Unconjugated
Storage:	Store at -20°C as received.
Stability:	Stable for 12 months from date of receipt.
Predicted Protein Size:	50.3 kDa
Gene Name:	lipoprotein lipase
Database Link:	<a href="#">NP_000228</a> <a href="#">Entrez Gene 16956 Mouse</a> <a href="#">Entrez Gene 24539 Rat</a> <a href="#">Entrez Gene 4023 Human</a> <a href="#">P06858</a>



[View online »](#)

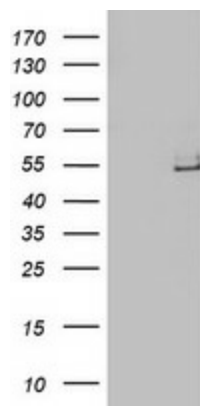
**Background:** LPL encodes lipoprotein lipase, which is expressed in heart, muscle, and adipose tissue. LPL functions as a homodimer, and has the dual functions of triglyceride hydrolase and ligand/bridging factor for receptor-mediated lipoprotein uptake. Severe mutations that cause LPL deficiency result in type I hyperlipoproteinemia, while less extreme mutations in LPL are linked to many disorders of lipoprotein metabolism. [provided by RefSeq]

**Synonyms:** HDLCQ11; LIPD

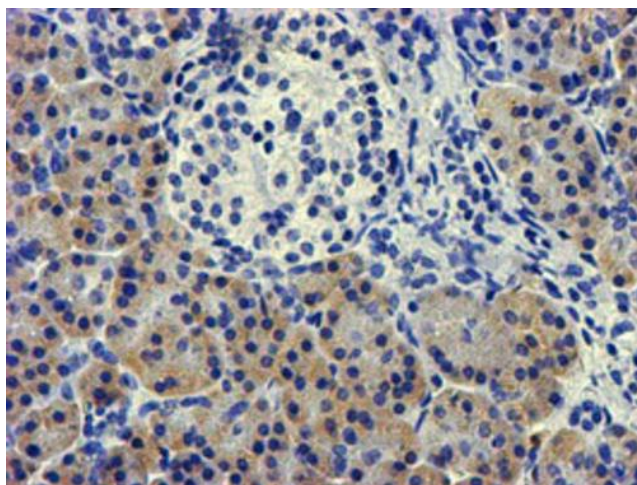
**Protein Families:** Druggable Genome

**Protein Pathways:** Alzheimer's disease, Glycerolipid metabolism, PPAR signaling pathway

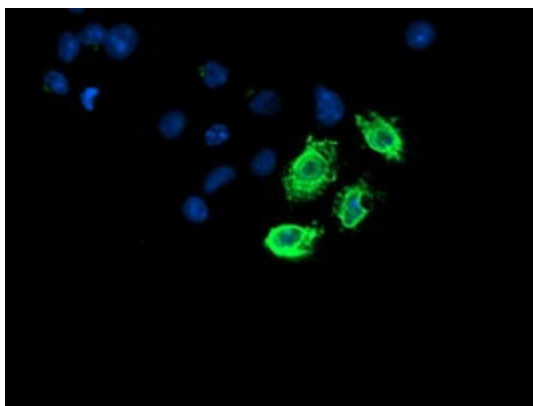
### Product images:



HEK293T cells were transfected with the pCMV6-ENTRY control (Left lane) or pCMV6-ENTRY LPL ([RC203766], Right lane) cDNA for 48 hrs and lysed. Equivalent amounts of cell lysates (5 ug per lane) were separated by SDS-PAGE and immunoblotted with anti-LPL. Positive lysates [LY400089] (100ug) and [LC400089] (20ug) can be purchased separately from OriGene.



Immunohistochemical staining of paraffin-embedded Human pancreas tissue within the normal limits using anti-LPL mouse monoclonal antibody. Heat-induced epitope retrieval by EDTA solution buffer pH 8.0 at 120°C for 3 min.



Anti-LPL mouse monoclonal antibody ([TA503789]) immunofluorescent staining of COS7 cells transiently transfected by pCMV6-ENTRY LPL ([RC203766]).