

## Product datasheet for **CF503781**

### **katanin p80 (KATNB1) Mouse Monoclonal Antibody [Clone ID: OTI4C10]**

#### **Product data:**

<b>Product Type:</b>	Primary Antibodies
<b>Clone Name:</b>	OTI4C10
<b>Applications:</b>	FC, IF, WB
<b>Recommended Dilution:</b>	WB 1:2000, IF 1:100, FLOW 1:100
<b>Reactivity:</b>	Human, Mouse, Rat
<b>Host:</b>	Mouse
<b>Isotype:</b>	IgG1
<b>Clonality:</b>	Monoclonal
<b>Immunogen:</b>	Full length human recombinant protein of human KATNB1(NP_005877) produced in HEK293T cell.
<b>Formulation:</b>	Lyophilized powder (original buffer 1X PBS, pH 7.3, 8% trehalose)
<b>Reconstitution Method:</b>	For reconstitution, we recommend adding 100uL distilled water to a final antibody concentration of about 1 mg/mL. To use this carrier-free antibody for conjugation experiment, we strongly recommend performing another round of desalting process. (OriGene recommends Zeba Spin Desalting Columns, 7KMWCO from Thermo Scientific)
<b>Purification:</b>	Purified from mouse ascites fluids or tissue culture supernatant by affinity chromatography (protein A/G)
<b>Conjugation:</b>	Unconjugated
<b>Storage:</b>	Store at -20°C as received.
<b>Stability:</b>	Stable for 12 months from date of receipt.
<b>Predicted Protein Size:</b>	72.2 kDa
<b>Gene Name:</b>	katanin regulatory subunit B1
<b>Database Link:</b>	<a href="#">NP_005877</a> <a href="#">Entrez Gene 10300 Human</a> <a href="#">Q9BVA0</a>



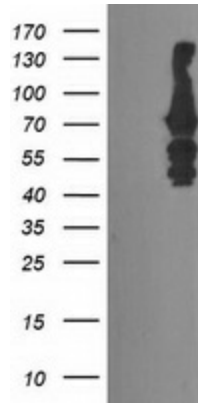
[View online »](#)

**Background:**

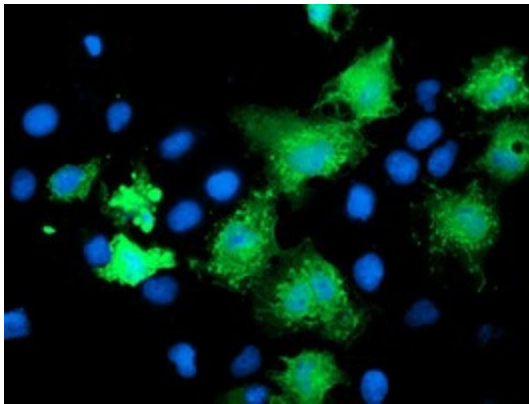
Microtubules, polymers of alpha and beta tubulin subunits, form the mitotic spindle of a dividing cell and help to organize membranous organelles during interphase. Katanin is a heterodimer that consists of a 60 kDa ATPase (p60 subunit A 1) and an 80 kDa accessory protein (p80 subunit B 1). The p60 subunit acts to sever and disassemble microtubules, while the p80 subunit targets the enzyme to the centrosome. Katanin is a member of the AAA family of ATPases. [provided by RefSeq]

**Synonyms:**

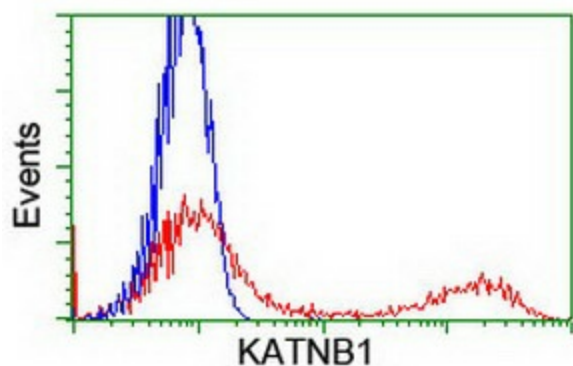
KAT; LIS6

**Product images:**


HEK293T cells were transfected with the pCMV6-ENTRY control (Left lane) or pCMV6-ENTRY KATNB1 ([RC201852], Right lane) cDNA for 48 hrs and lysed. Equivalent amounts of cell lysates (5 ug per lane) were separated by SDS-PAGE and immunoblotted with anti-KATNB1. Positive lysates [LY417004] (100ug) and [LC417004] (20ug) can be purchased separately from OriGene.



Anti-KATNB1 mouse monoclonal antibody ([TA503781]) immunofluorescent staining of COS7 cells transiently transfected by pCMV6-ENTRY KATNB1 ([RC201852]).



HEK293T cells transfected with either [RC201852] overexpress plasmid (Red) or empty vector control plasmid (Blue) were immunostained by anti-KATNB1 antibody ([TA503781]), and then analyzed by flow cytometry.