

Product datasheet for **CF503770**

UBE2M Mouse Monoclonal Antibody [Clone ID: OTI2D9]

Product data:

Product Type:	Primary Antibodies
Clone Name:	OTI2D9
Applications:	IF, WB
Recommended Dilution:	WB 1:500~2000, IF 1:100
Reactivity:	Human, Dog, Monkey, Mouse, Rat
Host:	Mouse
Isotype:	IgG1
Clonality:	Monoclonal
Immunogen:	Full length human recombinant protein of human UBE2M(NP_003960) produced in HEK293T cell.
Formulation:	Lyophilized powder (original buffer 1X PBS, pH 7.3, 8% trehalose)
Reconstitution Method:	For reconstitution, we recommend adding 100uL distilled water to a final antibody concentration of about 1 mg/mL. To use this carrier-free antibody for conjugation experiment, we strongly recommend performing another round of desalting process. (OriGene recommends Zeba Spin Desalting Columns, 7KMWCO from Thermo Scientific)
Purification:	Purified from mouse ascites fluids or tissue culture supernatant by affinity chromatography (protein A/G)
Conjugation:	Unconjugated
Storage:	Store at -20°C as received.
Stability:	Stable for 12 months from date of receipt.
Predicted Protein Size:	20.7 kDa
Gene Name:	ubiquitin conjugating enzyme E2 M
Database Link:	NP_003960 Entrez Gene 22192 Mouse Entrez Gene 361509 Rat Entrez Gene 484221 Dog Entrez Gene 712206 Monkey Entrez Gene 9040 Human P61081



[View online »](#)

Background:

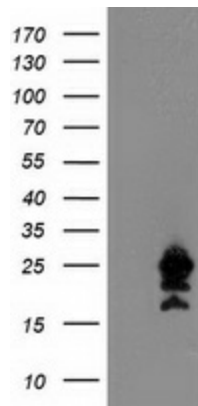
The modification of proteins with ubiquitin is an important cellular mechanism for targeting abnormal or short-lived proteins for degradation. Ubiquitination involves at least three classes of enzymes: ubiquitin-activating enzymes, or E1s, ubiquitin-conjugating enzymes, or E2s, and ubiquitin-protein ligases, or E3s. This gene encodes a member of the E2 ubiquitin-conjugating enzyme family. The encoded protein is linked with a ubiquitin-like protein, NEDD8, which can be conjugated to cellular proteins, such as Cdc53/culin. [provided by RefSeq]

Synonyms:

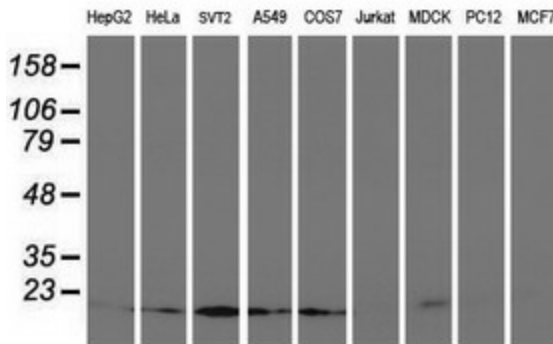
hUbc12; UBC-RS2; UBC12

Protein Pathways:

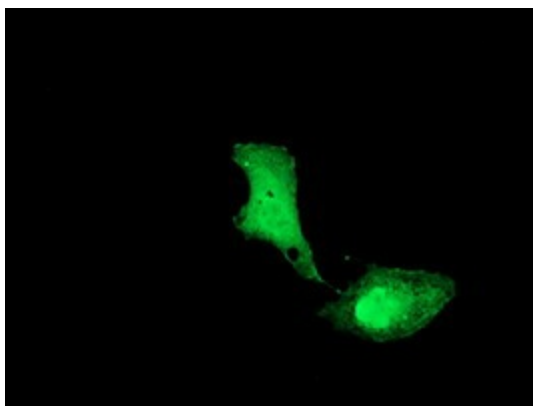
Ubiquitin mediated proteolysis

Product images:


HEK293T cells were transfected with the pCMV6-ENTRY control (Cat# [PS100001], Left lane) or pCMV6-ENTRY UBE2M (Cat# [RC208946], Right lane) cDNA for 48 hrs and lysed. Equivalent amounts of cell lysates (5 ug per lane) were separated by SDS-PAGE and immunoblotted with anti-UBE2M (Cat# [TA503770]). Positive lysates [LY418316] (100ug) and [LC418316] (20ug) can be purchased separately from OriGene.



Western blot analysis of extracts (35ug) from 9 different cell lines by using anti-UBE2M monoclonal antibody.



Anti-UBE2M mouse monoclonal antibody ([TA503770]) immunofluorescent staining of COS7 cells transiently transfected by pCMV6-ENTRY UBE2M ([RC208946]).