

## Product datasheet for **CF503745**

### Nucleotide binding protein like (NUBPL) Mouse Monoclonal Antibody [Clone ID: OTI3D11]

#### Product data:

Product Type:	Primary Antibodies
Clone Name:	OTI3D11
Applications:	IHC, WB
Recommended Dilution:	WB 1:2000, IHC 1:150
Reactivity:	Human, Mouse, Rat
Host:	Mouse
Isotype:	IgG1
Clonality:	Monoclonal
Immunogen:	Human recombinant protein fragment corresponding to amino acids 1-250 of human NUBPL(NP_079428) produced in E.coli.
Formulation:	Lyophilized powder (original buffer 1X PBS, pH 7.3, 8% trehalose)
Reconstitution Method:	For reconstitution, we recommend adding 100uL distilled water to a final antibody concentration of about 1 mg/mL. To use this carrier-free antibody for conjugation experiment, we strongly recommend performing another round of desalting process. (OriGene recommends Zeba Spin Desalting Columns, 7KMWCO from Thermo Scientific)
Purification:	Purified from mouse ascites fluids or tissue culture supernatant by affinity chromatography (protein A/G)
Conjugation:	Unconjugated
Storage:	Store at -20°C as received.
Stability:	Stable for 12 months from date of receipt.
Predicted Protein Size:	33.9 kDa
Gene Name:	nucleotide binding protein like
Database Link:	<a href="#">NP_079428</a> <a href="#">Entrez Gene 76826 Mouse</a> <a href="#">Entrez Gene 299008 Rat</a> <a href="#">Entrez Gene 80224 Human</a> <a href="#">Q8TB37</a>



[View online »](#)

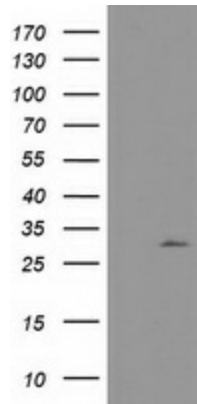
**Background:**

This gene encodes a member of the Mrp/NBP35 ATP-binding proteins family. The encoded protein is required for the assembly of the respiratory chain NADH dehydrogenase (complex I), an oligomeric enzymatic complex located in the inner mitochondrial membrane. The respiratory complex I consists of 45 subunits and 8 iron-sulfur (Fe/S) clusters. This protein is an Fe/S protein that plays a critical role in the assembly of respiratory complex I, likely by transferring Fe/S into the Fe/S-containing complex I subunits. Mutations in this gene cause mitochondrial complex I deficiency. Alternatively spliced transcript variants encoding distinct isoforms have been identified.

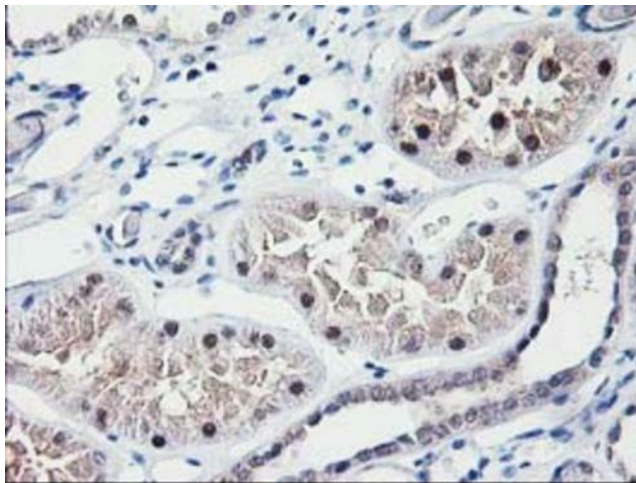
**Synonyms:**

C14orf127; hulnd1; IND1

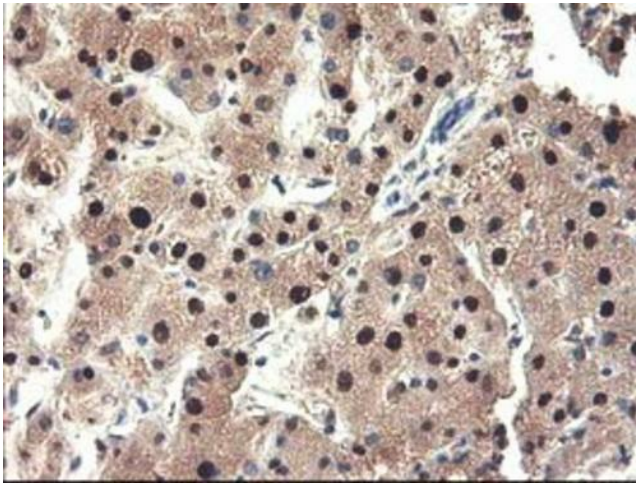
**Product images:**



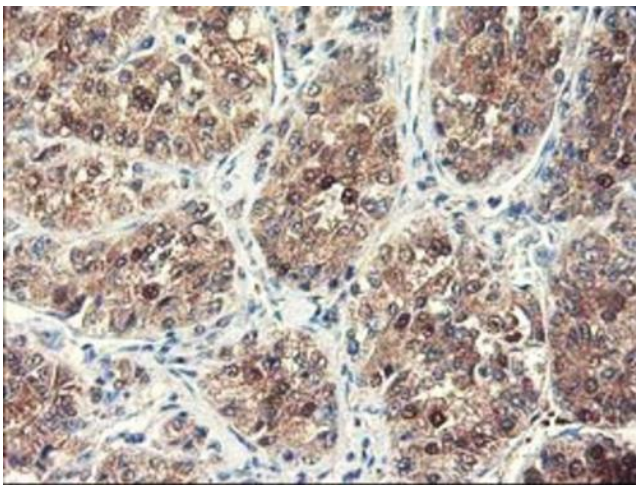
HEK293T cells were transfected with the pCMV6-ENTRY control (Left lane) or pCMV6-ENTRY NUBPL [RC204385], Right lane) cDNA for 48 hrs and lysed. Equivalent amounts of cell lysates (5 ug per lane) were separated by SDS-PAGE and immunoblotted with anti-NUBPL. Positive lysates [LY410869] (100ug) and [LC410869] (20ug) can be purchased separately from OriGene.



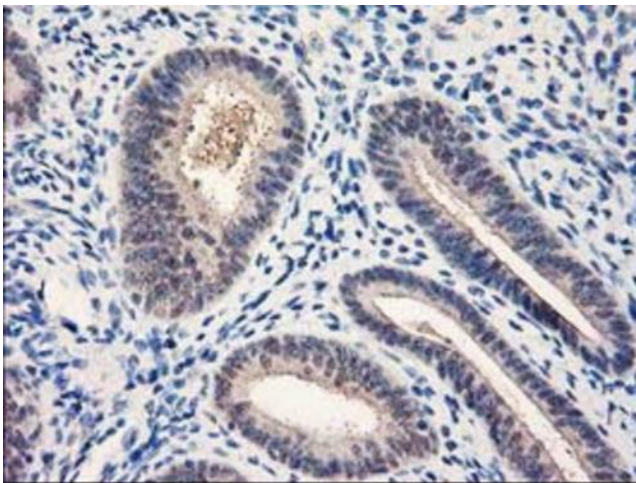
Immunohistochemical staining of paraffin-embedded Human Kidney tissue within the normal limits using anti-NUBPL mouse monoclonal antibody. (Heat-induced epitope retrieval by 10mM citric buffer, pH6.0, 100°C for 10min, [TA503745])



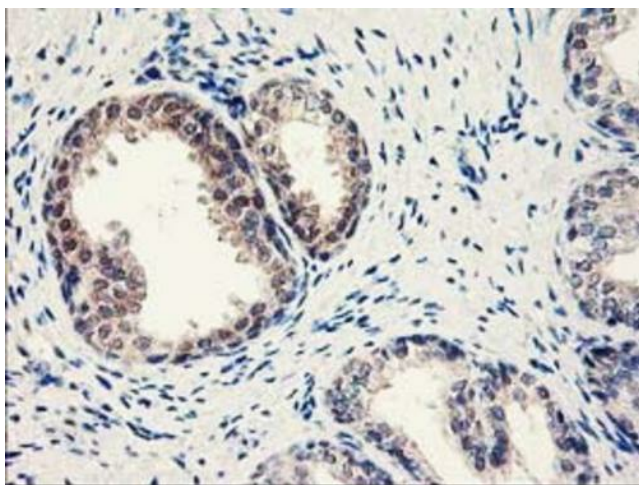
Immunohistochemical staining of paraffin-embedded Human liver tissue within the normal limits using anti-NUBPL mouse monoclonal antibody. (Heat-induced epitope retrieval by 10mM citric buffer, pH6.0, 100°C for 10min, [TA503745])



Immunohistochemical staining of paraffin-embedded Carcinoma of Human liver tissue using anti-NUBPL mouse monoclonal antibody. (Heat-induced epitope retrieval by 10mM citric buffer, pH6.0, 100°C for 10min, [TA503745])



Immunohistochemical staining of paraffin-embedded Human endometrium tissue within the normal limits using anti-NUBPL mouse monoclonal antibody. (Heat-induced epitope retrieval by 10mM citric buffer, pH6.0, 100°C for 10min, [TA503745])



Immunohistochemical staining of paraffin-embedded Human prostate tissue within the normal limits using anti-NUBPL mouse monoclonal antibody. (Heat-induced epitope retrieval by 10mM citric buffer, pH6.0, 100°C for 10min, [TA503745])