

Product datasheet for **CF503742**

TBC1D21 Mouse Monoclonal Antibody [Clone ID: OTI3F1]

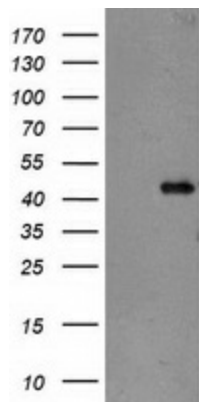
Product data:

Product Type:	Primary Antibodies
Clone Name:	OTI3F1
Applications:	IHC, WB
Recommended Dilution:	WB 1:500~2000, IHC 1:150
Reactivity:	Human, Mouse, Rat
Host:	Mouse
Isotype:	IgG2b
Clonality:	Monoclonal
Immunogen:	Full length recombinant protein of human TBC1D21(NP_699187) produced in HEK293T cell.
Formulation:	Lyophilized powder (original buffer 1X PBS, pH 7.3, 8% trehalose)
Reconstitution Method:	For reconstitution, we recommend adding 100uL distilled water to a final antibody concentration of about 1 mg/mL. To use this carrier-free antibody for conjugation experiment, we strongly recommend performing another round of desalting process. (OriGene recommends Zeba Spin Desalting Columns, 7KMWCO from Thermo Scientific)
Purification:	Purified from mouse ascites fluids or tissue culture supernatant by affinity chromatography (protein A/G)
Conjugation:	Unconjugated
Storage:	Store at -20°C as received.
Stability:	Stable for 12 months from date of receipt.
Predicted Protein Size:	39 kDa
Gene Name:	TBC1 domain family member 21
Database Link:	NP_699187 Entrez Gene 161514 Human Q8IYX1
Synonyms:	MgcRabGAP

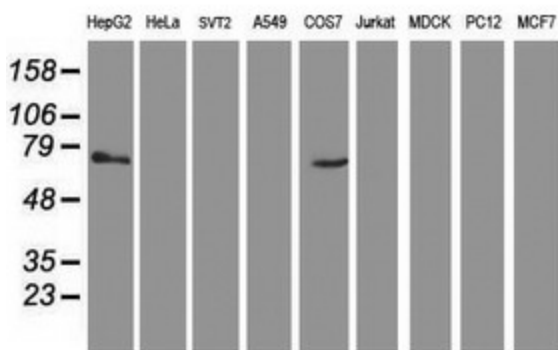


[View online »](#)

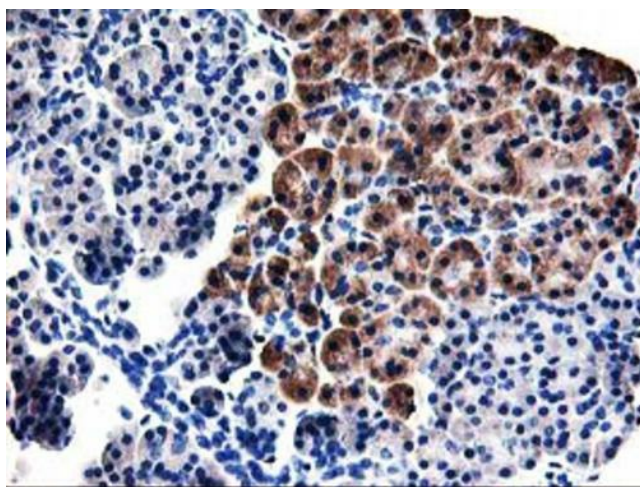
Product images:



HEK293T cells were transfected with the pCMV6-ENTRY control (Left lane) or pCMV6-ENTRY TBC1D21 ([RC206651], Right lane) cDNA for 48 hrs and lysed. Equivalent amounts of cell lysates (5 ug per lane) were separated by SDS-PAGE and immunoblotted with anti-TBC1D21. Positive lysates [LY407069] (100ug) and [LC407069] (20ug) can be purchased separately from OriGene.



Western blot analysis of extracts (35ug) from 9 different cell lines by using anti-TBC1D21 monoclonal antibody.



Immunohistochemical staining of paraffin-embedded Human pancreas tissue within the normal limits using anti-TBC1D21 mouse monoclonal antibody. Heat-induced epitope retrieval by EDTA solution buffer pH 8.0 at 120°C for 3 min.