

## Product datasheet for **CF503718**

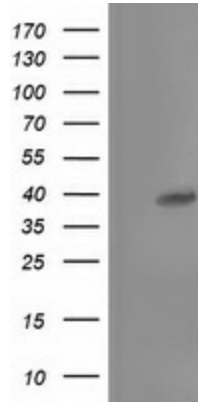
### **TBC1D21 Mouse Monoclonal Antibody [Clone ID: OT1C7]**

#### **Product data:**

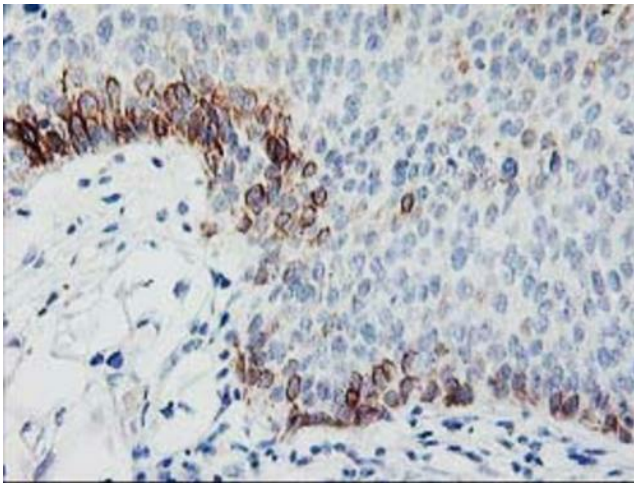
|                                |  |
|--------------------------------|--|
| <b>Product Type:</b>           | Primary Antibodies   |
| <b>Clone Name:</b>             | OT1C7  |
| <b>Applications:</b>           | IHC, WB  |
| <b>Recommended Dilution:</b>   | WB 1:2000, IHC 1:150   |
| <b>Reactivity:</b>             | Human, Mouse, Rat  |
| <b>Host:</b>                   | Mouse  |
| <b>Isotype:</b>                | IgG2b  |
| <b>Clonality:</b>              | Monoclonal   |
| <b>Immunogen:</b>              | Full length human recombinant protein of human TBC1D21(NP_699187) produced in HEK293T cell.  |
| <b>Formulation:</b>            | Lyophilized powder (original buffer 1X PBS, pH 7.3, 8% trehalose)  |
| <b>Reconstitution Method:</b>  | For reconstitution, we recommend adding 100uL distilled water to a final antibody concentration of about 1 mg/mL. To use this carrier-free antibody for conjugation experiment, we strongly recommend performing another round of desalting process. (OriGene recommends Zeba Spin Desalting Columns, 7KMWCO from Thermo Scientific) |
| <b>Purification:</b>           | Purified from mouse ascites fluids or tissue culture supernatant by affinity chromatography (protein A/G)  |
| <b>Conjugation:</b>            | Unconjugated   |
| <b>Storage:</b>                | Store at -20°C as received.  |
| <b>Stability:</b>              | Stable for 12 months from date of receipt.   |
| <b>Predicted Protein Size:</b> | 39 kDa   |
| <b>Gene Name:</b>              | TBC1 domain family member 21   |
| <b>Database Link:</b>          | <a href="#">NP_699187</a><br><a href="#">Entrez Gene 161514 Human</a><br><a href="#">Q8IYX1</a>  |
| <b>Synonyms:</b>               | MgcRabGAP  |



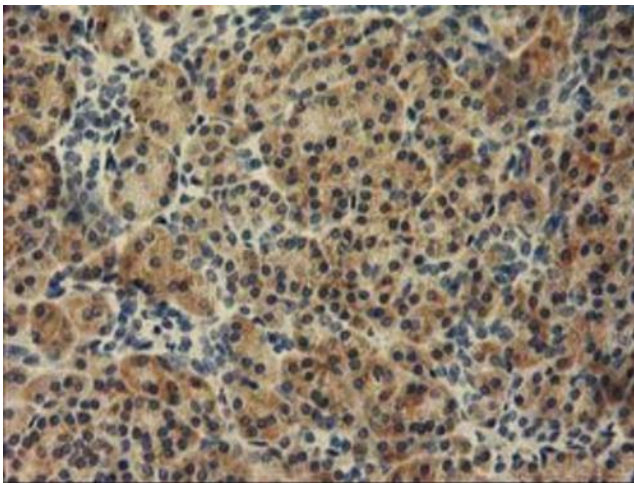
[View online »](#)

**Product images:**

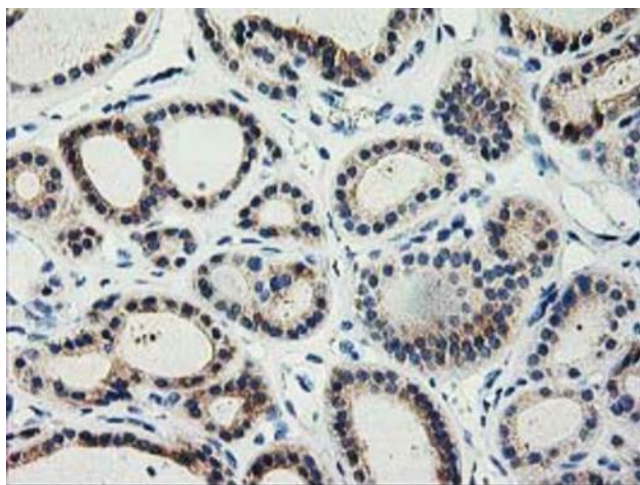
HEK293T cells were transfected with the pCMV6-ENTRY control (Left lane) or pCMV6-ENTRY TBC1D21 ([RC206651], Right lane) cDNA for 48 hrs and lysed. Equivalent amounts of cell lysates (5 ug per lane) were separated by SDS-PAGE and immunoblotted with anti-TBC1D21. Positive lysates [LY407069] (100ug) and [LC407069] (20ug) can be purchased separately from OriGene.



Immunohistochemical staining of paraffin-embedded Carcinoma of Human bladder tissue using anti-TBC1D21 mouse monoclonal antibody. (Heat-induced epitope retrieval by 10mM citric buffer, pH6.0, 100°C for 10min, [TA503718])



Immunohistochemical staining of paraffin-embedded Human pancreas tissue within the normal limits using anti-TBC1D21 mouse monoclonal antibody. (Heat-induced epitope retrieval by 10mM citric buffer, pH6.0, 100°C for 10min, [TA503718])



Immunohistochemical staining of paraffin-embedded Carcinoma of Human thyroid tissue using anti-TBC1D21 mouse monoclonal antibody. (Heat-induced epitope retrieval by 10mM citric buffer, pH6.0, 100°C for 10min, [TA503718])