

Product datasheet for **CF503700**

SCDGFB (PDGFD) Mouse Monoclonal Antibody [Clone ID: OTI1C1]

Product data:

Product Type:	Primary Antibodies
Clone Name:	OTI1C1
Applications:	FC, WB
Recommended Dilution:	WB 1:2000, FLOW 1:100
Reactivity:	Human, Mouse, Rat
Host:	Mouse
Isotype:	IgG1
Clonality:	Monoclonal
Immunogen:	Human recombinant protein fragment corresponding to amino acids 19-247 of human PDGFD(NP_079484) produced in E.coli.
Formulation:	Lyophilized powder (original buffer 1X PBS, pH 7.3, 8% trehalose)
Reconstitution Method:	For reconstitution, we recommend adding 100uL distilled water to a final antibody concentration of about 1 mg/mL. To use this carrier-free antibody for conjugation experiment, we strongly recommend performing another round of desalting process. (OriGene recommends Zeba Spin Desalting Columns, 7KMWCO from Thermo Scientific)
Purification:	Purified from mouse ascites fluids or tissue culture supernatant by affinity chromatography (protein A/G)
Conjugation:	Unconjugated
Storage:	Store at -20°C as received.
Stability:	Stable for 12 months from date of receipt.
Predicted Protein Size:	40.2 kDa
Gene Name:	platelet derived growth factor D
Database Link:	NP_079484 Entrez Gene 66018 Rat Entrez Gene 71785 Mouse Entrez Gene 80310 Human Q9GZP0



[View online »](#)

Background:

The protein encoded by this gene is a member of the platelet-derived growth factor family. The four members of this family are mitogenic factors for cells of mesenchymal origin and are characterized by a core motif of eight cysteines, seven of which are found in this factor. This gene product only forms homodimers and, therefore, does not dimerize with the other three family members. It differs from alpha and beta members of this family in having an unusual N-terminal domain, the CUB domain. Two splice variants have been identified for this gene. [provided by RefSeq]

Synonyms:

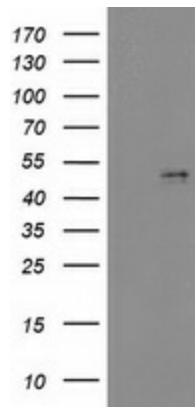
IEGF; MSTP036; SCDGF-B; SCDGFB

Protein Families:

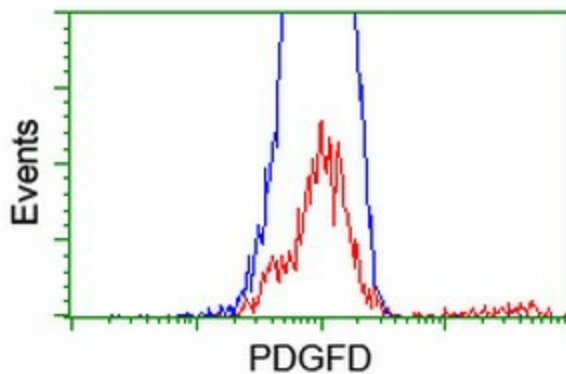
Druggable Genome, Secreted Protein

Protein Pathways:

Focal adhesion, Gap junction, Melanoma, Prostate cancer, Regulation of actin cytoskeleton

Product images:


HEK293T cells were transfected with the pCMV6-ENTRY control (Cat# [PS100001], Left lane) or pCMV6-ENTRY PDGFD (Cat# [RC219641], Right lane) cDNA for 48 hrs and lysed. Equivalent amounts of cell lysates (5 ug per lane) were separated by SDS-PAGE and immunoblotted with anti-PDGFD (Cat# [TA503700]). Positive lysates [LY403061] (100ug) and [LC403061] (20ug) can be purchased separately from OriGene.



HEK293T cells transfected with either [RC219641] overexpress plasmid (Red) or empty vector control plasmid (Blue) were immunostained by anti-PDGFD antibody ([TA503700]), and then analyzed by flow cytometry.