

Product datasheet for **CF503484**

Cytochrome p450 2J2 (CYP2J2) Mouse Monoclonal Antibody [Clone ID: OTI2A9]

Product data:

Product Type:	Primary Antibodies
Clone Name:	OTI2A9
Applications:	FC, IF, WB
Recommended Dilution:	WB 1:2000, IF 1:100, FLOW 1:100
Reactivity:	Human
Host:	Mouse
Isotype:	IgG1
Clonality:	Monoclonal
Immunogen:	Full length human recombinant protein of human CYP2J2(NP_000766) produced in HEK293T cell.
Formulation:	Lyophilized powder (original buffer 1X PBS, pH 7.3, 8% trehalose)
Reconstitution Method:	For reconstitution, we recommend adding 100uL distilled water to a final antibody concentration of about 1 mg/mL. To use this carrier-free antibody for conjugation experiment, we strongly recommend performing another round of desalting process. (OriGene recommends Zeba Spin Desalting Columns, 7KMWCO from Thermo Scientific)
Purification:	Purified from mouse ascites fluids or tissue culture supernatant by affinity chromatography (protein A/G)
Conjugation:	Unconjugated
Storage:	Store at -20°C as received.
Stability:	Stable for 12 months from date of receipt.
Predicted Protein Size:	57.4 kDa
Gene Name:	cytochrome P450 family 2 subfamily J member 2
Database Link:	NP_000766 Entrez Gene 1573 Human P51589



[View online »](#)

Background:

This gene encodes a member of the cytochrome P450 superfamily of enzymes. The cytochrome P450 proteins are monooxygenases which catalyze many reactions involved in drug metabolism and synthesis of cholesterol, steroids and other lipids. This protein localizes to the endoplasmic reticulum and is thought to be the predominant enzyme responsible for epoxidation of endogenous arachidonic acid in cardiac tissue. [provided by RefSeq]

Synonyms:

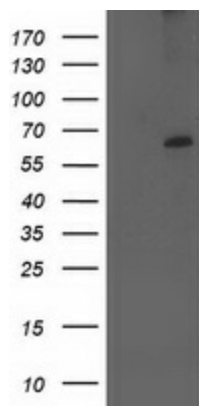
CPJ2

Protein Families:

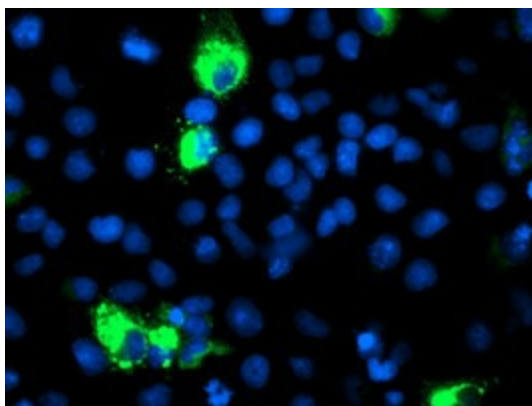
Druggable Genome, P450, Transmembrane

Protein Pathways:

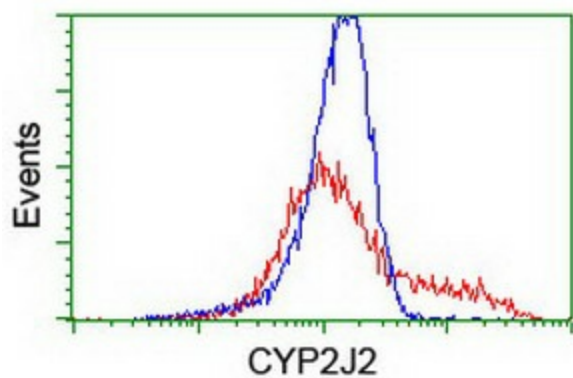
Arachidonic acid metabolism, Linoleic acid metabolism, Metabolic pathways

Product images:

HEK293T cells were transfected with the pCMV6-ENTRY control (Left lane) or pCMV6-ENTRY CYP2J2 ([RC207417], Right lane) cDNA for 48 hrs and lysed. Equivalent amounts of cell lysates (5 ug per lane) were separated by SDS-PAGE and immunoblotted with anti-CYP2J2. Positive lysates [LY424525] (100ug) and [LC424525] (20ug) can be purchased separately from OriGene.



Anti-CYP2J2 mouse monoclonal antibody ([TA503484]) immunofluorescent staining of COS7 cells transiently transfected by pCMV6-ENTRY CYP2J2 ([RC207417]).



HEK293T cells transfected with either [RC207417] overexpress plasmid (Red) or empty vector control plasmid (Blue) were immunostained by anti-CYP2J2 antibody ([TA503484]), and then analyzed by flow cytometry.