

Product datasheet for **CF503478**

PDE4 (PDE4B) Mouse Monoclonal Antibody [Clone ID: OTI1B11]

Product data:

Product Type:	Primary Antibodies
Clone Name:	OTI1B11
Applications:	FC, WB
Recommended Dilution:	WB 1:500~2000, FLOW 1:100
Reactivity:	Human, Mouse, Rat
Host:	Mouse
Isotype:	IgG1
Clonality:	Monoclonal
Immunogen:	Full length human recombinant protein of human PDE4B(NP_002591) produced in HEK293T cell.
Formulation:	Lyophilized powder (original buffer 1X PBS, pH 7.3, 8% trehalose)
Reconstitution Method:	For reconstitution, we recommend adding 100uL distilled water to a final antibody concentration of about 1 mg/mL. To use this carrier-free antibody for conjugation experiment, we strongly recommend performing another round of desalting process. (OriGene recommends Zeba Spin Desalting Columns, 7KMWCO from Thermo Scientific)
Purification:	Purified from mouse ascites fluids or tissue culture supernatant by affinity chromatography (protein A/G)
Conjugation:	Unconjugated
Storage:	Store at -20°C as received.
Stability:	Stable for 12 months from date of receipt.
Predicted Protein Size:	83.2 kDa
Gene Name:	phosphodiesterase 4B
Database Link:	NP_002591 Entrez Gene 18578 Mouse Entrez Gene 24626 Rat Entrez Gene 5142 Human Q07343



[View online »](#)

Background:

This gene is a member of the type IV, cyclic AMP (cAMP)-specific, cyclic nucleotide phosphodiesterase (PDE) family. Cyclic nucleotides are important second messengers that regulate and mediate a number of cellular responses to extracellular signals, such as hormones, light, and neurotransmitters. The cyclic nucleotide phosphodiesterases (PDEs) regulate the cellular concentrations of cyclic nucleotides and thereby play a role in signal transduction. This gene encodes a protein that specifically hydrolyzes cAMP. Altered activity of this protein has been associated with schizophrenia and bipolar affective disorder. Alternate transcriptional splice variants, encoding different isoforms, have been characterized. [provided by RefSeq]

Synonyms:

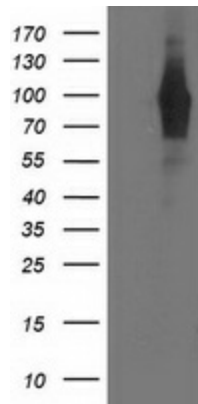
DPDE4; PDE4B5; PDEIVB

Protein Families:

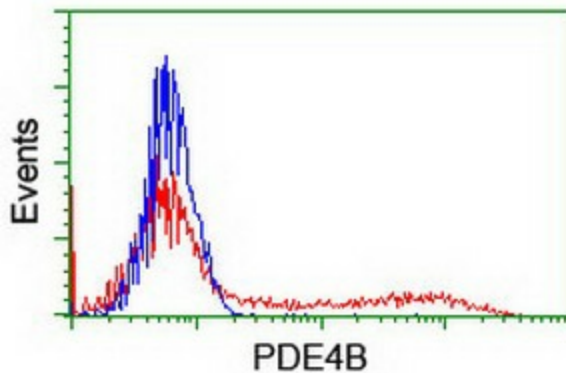
Druggable Genome

Protein Pathways:

Progesterone-mediated oocyte maturation, Purine metabolism

Product images:


HEK293T cells were transfected with the pCMV6-ENTRY control (Left lane) or pCMV6-ENTRY PDE4B ([RC211956], Right lane) cDNA for 48 hrs and lysed. Equivalent amounts of cell lysates (5 ug per lane) were separated by SDS-PAGE and immunoblotted with anti-PDE4B. Positive lysates [LY400919] (100ug) and [LC400919] (20ug) can be purchased separately from OriGene.



HEK293T cells transfected with either [RC211956] overexpress plasmid (Red) or empty vector control plasmid (Blue) were immunostained by anti-PDE4B antibody ([TA503478]), and then analyzed by flow cytometry.