

Product datasheet for **CF503438**

TAZ (WWTR1) Mouse Monoclonal Antibody [Clone ID: OTI1A12]

Product data:

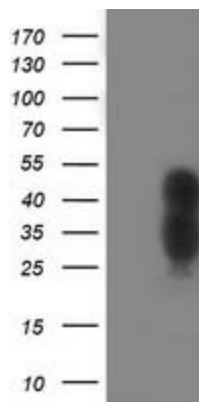
| | |
|-------------------------|--|
| Product Type: | Primary Antibodies |
| Clone Name: | OTI1A12 |
| Applications: | FC, IF, WB |
| Recommended Dilution: | WB 1:500~2000, IF 1:100, FLOW 1:100 |
| Reactivity: | Human, Dog, Monkey, Mouse, Rat |
| Host: | Mouse |
| Isotype: | IgG2a |
| Clonality: | Monoclonal |
| Immunogen: | Full length human recombinant protein of human WWTR1(NP_056287) produced in HEK293 cell. |
| Formulation: | Lyophilized powder (original buffer 1X PBS, pH 7.3, 8% trehalose) |
| Reconstitution Method: | For reconstitution, we recommend adding 100uL distilled water to a final antibody concentration of about 1 mg/mL. To use this carrier-free antibody for conjugation experiment, we strongly recommend performing another round of desalting process. (OriGene recommends Zeba Spin Desalting Columns, 7KMWCO from Thermo Scientific) |
| Purification: | Purified from mouse ascites fluids or tissue culture supernatant by affinity chromatography (protein A/G) |
| Conjugation: | Unconjugated |
| Storage: | Store at -20°C as received. |
| Stability: | Stable for 12 months from date of receipt. |
| Predicted Protein Size: | 43.9 kDa |
| Gene Name: | WW domain containing transcription regulator 1 |
| Database Link: | NP_056287 Entrez Gene 97064 Mouse Entrez Gene 295062 Rat Entrez Gene 609743 Dog Entrez Gene 711567 Monkey Entrez Gene 25937 Human Q9GZV5 |
| Synonyms: | TAZ |



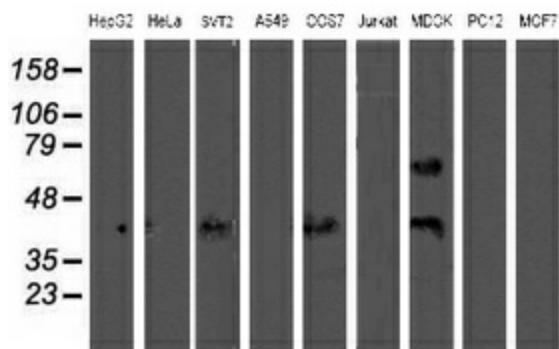
[View online »](#)

Protein Families: Druggable Genome, Transcription Factors

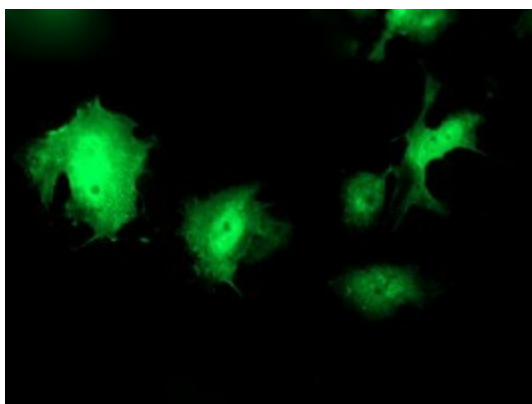
Product images:



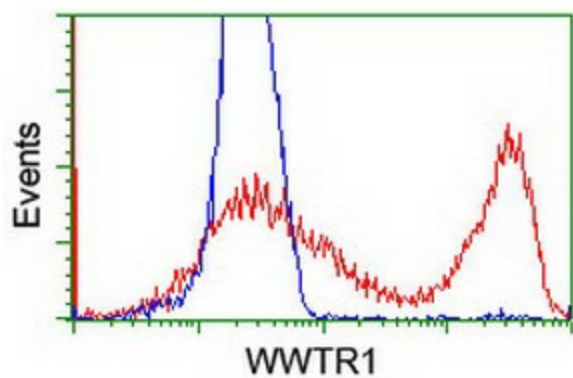
HEK293T cells were transfected with the pCMV6-ENTRY control (Left lane) or pCMV6-ENTRY WWTR1 ([RC204082], Right lane) cDNA for 48 hrs and lysed. Equivalent amounts of cell lysates (5 ug per lane) were separated by SDS-PAGE and immunoblotted with anti-WWTR1. Positive lysates [LY414524] (100ug) and [LC414524] (20ug) can be purchased separately from OriGene.



Western blot analysis of extracts (35ug) from 9 different cell lines by using anti-WWTR1 monoclonal antibody.



Anti-WWTR1 mouse monoclonal antibody ([TA503438]) immunofluorescent staining of COS7 cells transiently transfected by pCMV6-ENTRY WWTR1 ([RC204082]).



HEK293T cells transfected with either [RC204082] overexpress plasmid (Red) or empty vector control plasmid (Blue) were immunostained by anti-WWTR1 antibody ([TA503438]), and then analyzed by flow cytometry.