

Product datasheet for **CF503396**

TAZ (WWTR1) Mouse Monoclonal Antibody [Clone ID: OTI1B5]

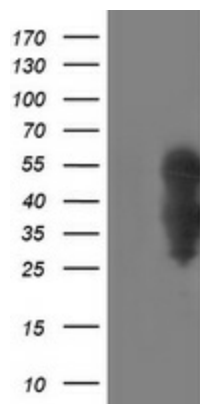
Product data:

Product Type:	Primary Antibodies
Clone Name:	OTI1B5
Applications:	FC, IF, WB
Recommended Dilution:	WB 1:200~500, IF 1:100, FLOW 1:100
Reactivity:	Human, Mouse, Rat
Host:	Mouse
Isotype:	IgG1
Clonality:	Monoclonal
Immunogen:	Full length human recombinant protein of human WWTR1(NP_056287) produced in HEK293 cell.
Formulation:	Lyophilized powder (original buffer 1X PBS, pH 7.3, 8% trehalose)
Reconstitution Method:	For reconstitution, we recommend adding 100uL distilled water to a final antibody concentration of about 1 mg/mL. To use this carrier-free antibody for conjugation experiment, we strongly recommend performing another round of desalting process. (OriGene recommends Zeba Spin Desalting Columns, 7KMWCO from Thermo Scientific)
Purification:	Purified from mouse ascites fluids or tissue culture supernatant by affinity chromatography (protein A/G)
Conjugation:	Unconjugated
Storage:	Store at -20°C as received.
Stability:	Stable for 12 months from date of receipt.
Predicted Protein Size:	43.9 kDa
Gene Name:	WW domain containing transcription regulator 1
Database Link:	NP_056287 Entrez Gene 97064 MouseEntrez Gene 295062 RatEntrez Gene 25937 Human Q9GZV5
Synonyms:	TAZ
Protein Families:	Druggable Genome, Transcription Factors

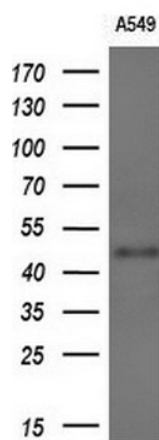


[View online »](#)

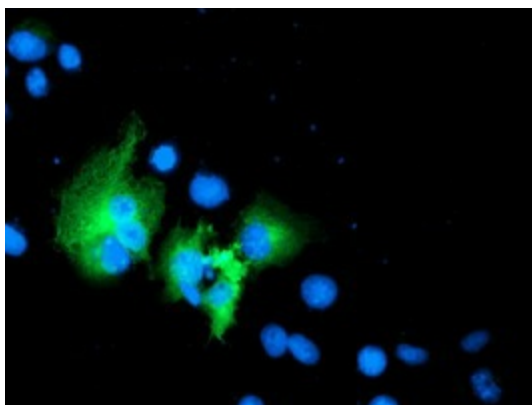
Product images:



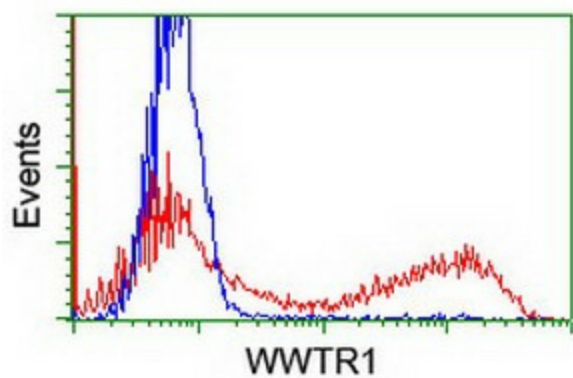
HEK293T cells were transfected with the pCMV6-ENTRY control (Left lane) or pCMV6-ENTRY WWTR1 ([RC204082], Right lane) cDNA for 48 hrs and lysed. Equivalent amounts of cell lysates (5 ug per lane) were separated by SDS-PAGE and immunoblotted with anti-WWTR1. Positive lysates [LY414524] (100ug) and [LC414524] (20ug) can be purchased separately from OriGene.



Western blot analysis of extracts (10ug) from 1 cell line by using anti-WWTR1 monoclonal antibody (1:200).



Anti-WWTR1 mouse monoclonal antibody ([TA503396]) immunofluorescent staining of COS7 cells transiently transfected by pCMV6-ENTRY WWTR1 ([RC204082]).



HEK293T cells transfected with either [RC204082] overexpress plasmid (Red) or empty vector control plasmid (Blue) were immunostained by anti-WWTR1 antibody ([TA503396]), and then analyzed by flow cytometry.