

Product datasheet for **CF503388**

Lipoamide Dehydrogenase (DLD) Mouse Monoclonal Antibody [Clone ID: OT18A10]

Product data:

Product Type:	Primary Antibodies
Clone Name:	OT18A10
Applications:	FC, WB
Recommended Dilution:	WB 1:500, FLOW 1:100
Reactivity:	Human, Dog, Rat, Monkey, Mouse
Host:	Mouse
Isotype:	IgG1
Clonality:	Monoclonal
Immunogen:	Full length human recombinant protein of human DLD(NP_000099) produced in HEK293T cell.
Formulation:	Lyophilized powder (original buffer 1X PBS, pH 7.3, 8% trehalose)
Reconstitution Method:	For reconstitution, we recommend adding 100uL distilled water to a final antibody concentration of about 1 mg/mL. To use this carrier-free antibody for conjugation experiment, we strongly recommend performing another round of desalting process. (OriGene recommends Zeba Spin Desalting Columns, 7KMWCO from Thermo Scientific)
Purification:	Purified from mouse ascites fluids or tissue culture supernatant by affinity chromatography (protein A/G)
Conjugation:	Unconjugated
Storage:	Store at -20°C as received.
Stability:	Stable for 12 months from date of receipt.
Predicted Protein Size:	50.1 kDa
Gene Name:	dihydrolipoamide dehydrogenase
Database Link:	NP_000099 Entrez Gene 13382 Mouse Entrez Gene 298942 Rat Entrez Gene 403978 Dog Entrez Gene 700494 Monkey Entrez Gene 1738 Human P09622



[View online »](#)

Background:

This gene encodes the L protein of the mitochondrial glycine cleavage system. The L protein, also named dihydrolipoamide dehydrogenase, is also a component of the pyruvate dehydrogenase complex, the alpha-ketoglutarate dehydrogenase complex, and the branched-chain alpha-keto acid dehydrogenase complex. Mutations in this gene have been identified in patients with E3-deficient maple syrup urine disease and lipoamide dehydrogenase deficiency. [provided by RefSeq, Jul 2008]

Synonyms:

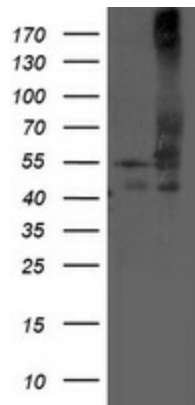
DLDD; DLDH; E3; GCSL; LAD; PHE3

Protein Families:

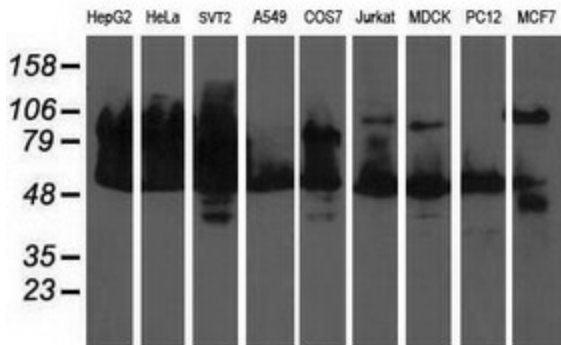
Druggable Genome

Protein Pathways:

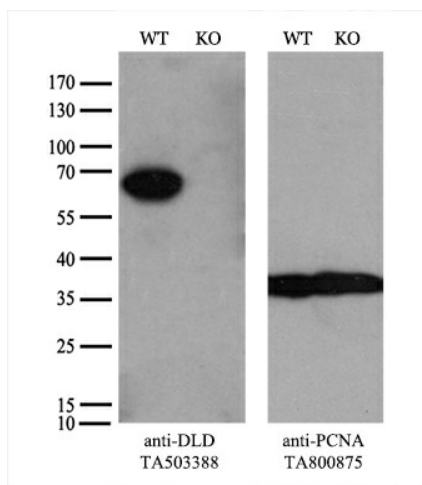
Citrate cycle (TCA cycle), Glycine, serine and threonine metabolism, Glycolysis / Gluconeogenesis, Metabolic pathways, Pyruvate metabolism, Valine, leucine and isoleucine degradation

Product images:


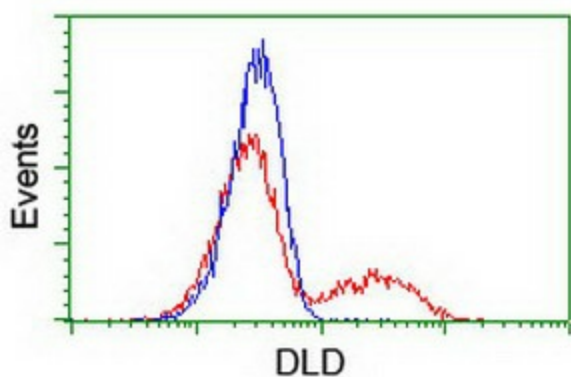
HEK293T cells were transfected with the pCMV6-ENTRY control (Left lane) or pCMV6-ENTRY DLD ([RC200639], Right lane) cDNA for 48 hrs and lysed. Equivalent amounts of cell lysates (5 ug per lane) were separated by SDS-PAGE and immunoblotted with anti-DLD. Positive lysates [LY400041] (100ug) and [LC400041] (20ug) can be purchased separately from OriGene.



Western blot analysis of extracts (35ug) from 9 different cell lines by using anti-DLD monoclonal antibody (HepG2: human; HeLa: human; SVT2: mouse; A549: human; COS7: monkey; Jurkat: human; MDCK: canine; PC12: rat; MCF7: human).



Equivalent amounts of cell lysates (10 ug per lane) of wild-type HeLa cells (WT, Cat# LC810HELA) and DLD-Knockout HeLa cells (KO, Cat# [LC832718]) were separated by SDS-PAGE and immunoblotted with anti-DLD monoclonal antibody [TA503388] (1:500). Then the blotted membrane was stripped and reprobed with anti-PCNA antibody as a loading control.



HEK293T cells transfected with either [RC200639] overexpress plasmid (Red) or empty vector control plasmid (Blue) were immunostained by anti-DLD antibody ([TA503388]), and then analyzed by flow cytometry.