

## Product datasheet for **CF503380**

### TFIIF (GTF2F1) Mouse Monoclonal Antibody [Clone ID: OTI2H3]

#### Product data:

Product Type:	Primary Antibodies
Clone Name:	OTI2H3
Applications:	FC, IF, WB
Recommended Dilution:	WB 1:500~2000, IF 1:100, FLOW 1:100
Reactivity:	Human, Monkey, Mouse, Rat
Host:	Mouse
Isotype:	IgG1
Clonality:	Monoclonal
Immunogen:	Full length human recombinant protein of human GTF2F1(NP_002087) produced in HEK293T cell.
Formulation:	Lyophilized powder (original buffer 1X PBS, pH 7.3, 8% trehalose)
Reconstitution Method:	For reconstitution, we recommend adding 100uL distilled water to a final antibody concentration of about 1 mg/mL. To use this carrier-free antibody for conjugation experiment, we strongly recommend performing another round of desalting process. (OriGene recommends Zeba Spin Desalting Columns, 7KMWCO from Thermo Scientific)
Purification:	Purified from mouse ascites fluids or tissue culture supernatant by affinity chromatography (protein A/G)
Conjugation:	Unconjugated
Storage:	Store at -20°C as received.
Stability:	Stable for 12 months from date of receipt.
Predicted Protein Size:	58.1 kDa
Gene Name:	general transcription factor IIF subunit 1
Database Link:	<a href="#">NP_002087</a> <a href="#">Entrez Gene 98053 MouseEntrez Gene 316123 RatEntrez Gene 699221 MonkeyEntrez Gene 2962 Human</a> <a href="#">P35269</a>
Synonyms:	BTF4; RAP74; TF2F1; TFIIF

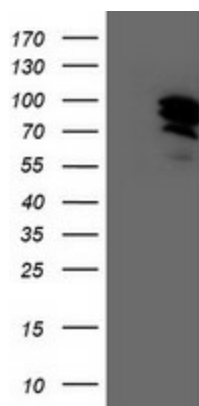


[View online »](#)

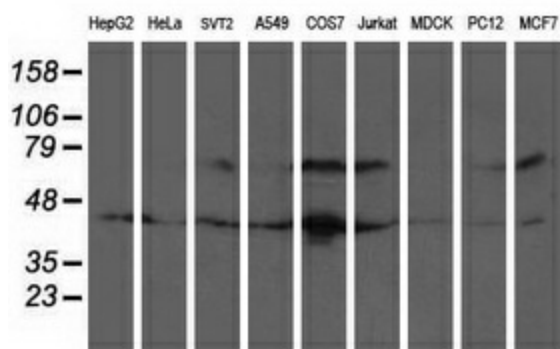
**Protein Families:** Druggable Genome, Transcription Factors

**Protein Pathways:** Basal transcription factors

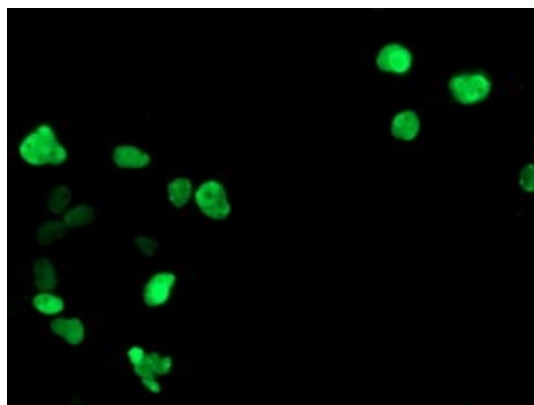
**Product images:**



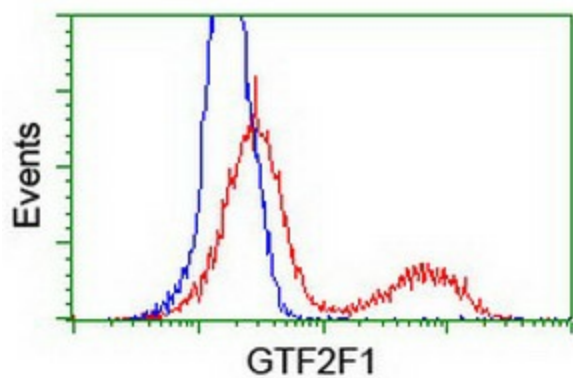
HEK293T cells were transfected with the pCMV6-ENTRY control (Left lane) or pCMV6-ENTRY GTF2F1 ([RC201294], Right lane) cDNA for 48 hrs and lysed. Equivalent amounts of cell lysates (5 ug per lane) were separated by SDS-PAGE and immunoblotted with anti-GTF2F1. Positive lysates [LY400767] (100ug) and [LC400767] (20ug) can be purchased separately from OriGene.



Western blot analysis of extracts (35ug) from 9 different cell lines by using anti-GTF2F1 monoclonal antibody.



Anti-GTF2F1 mouse monoclonal antibody ([TA503380]) immunofluorescent staining of COS7 cells transiently transfected by pCMV6-ENTRY GTF2F1 ([RC201294]).



HEK293T cells transfected with either [RC201294] overexpress plasmid (Red) or empty vector control plasmid (Blue) were immunostained by anti-GTF2F1 antibody ([TA503380]), and then analyzed by flow cytometry.