

Product datasheet for CF503373

TFIIF (GTF2F1) Mouse Monoclonal Antibody [Clone ID: OTI1C5]

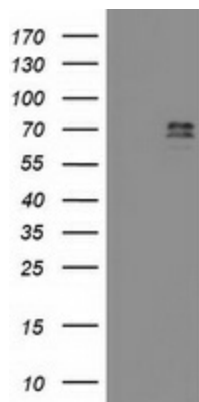
Product data:

Product Type:	Primary Antibodies
Clone Name:	OTI1C5
Applications:	FC, IF, WB
Recommended Dilution:	WB 1:500~2000, IF 1:100, FLOW 1:100
Reactivity:	Human, Mouse, Rat
Host:	Mouse
Isotype:	IgG1
Clonality:	Monoclonal
Immunogen:	Full length human recombinant protein of human GTF2F1(NP_002087) produced in HEK293T cell.
Formulation:	Lyophilized powder (original buffer 1X PBS, pH 7.3, 8% trehalose)
Reconstitution Method:	For reconstitution, we recommend adding 100uL distilled water to a final antibody concentration of about 1 mg/mL. To use this carrier-free antibody for conjugation experiment, we strongly recommend performing another round of desalting process. (OriGene recommends Zeba Spin Desalting Columns, 7KMWCO from Thermo Scientific)
Purification:	Purified from mouse ascites fluids or tissue culture supernatant by affinity chromatography (protein A/G)
Conjugation:	Unconjugated
Storage:	Store at -20°C as received.
Stability:	Stable for 12 months from date of receipt.
Predicted Protein Size:	58.1 kDa
Gene Name:	general transcription factor IIF subunit 1
Database Link:	NP_002087 Entrez Gene 98053 Mouse Entrez Gene 316123 Rat Entrez Gene 2962 Human P35269
Synonyms:	BTF4; RAP74; TF2F1; TFIIF
Protein Families:	Druggable Genome, Transcription Factors

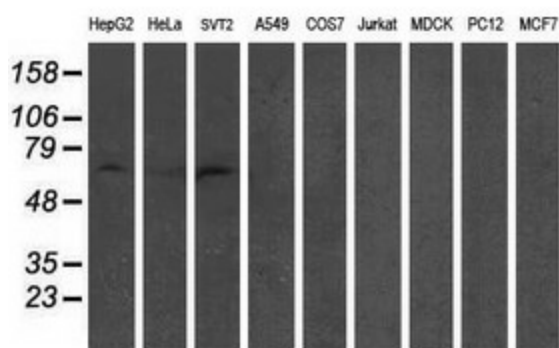

[View online »](#)

Protein Pathways: Basal transcription factors

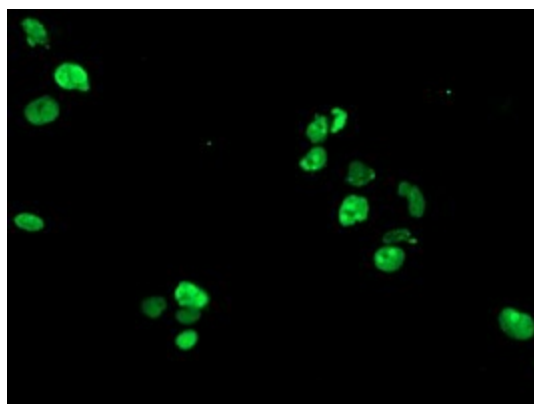
Product images:



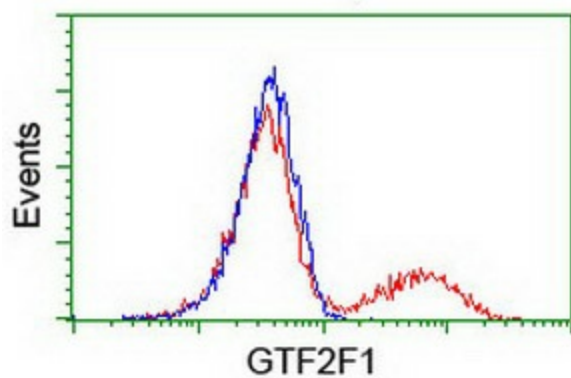
HEK293T cells were transfected with the pCMV6-ENTRY control (Left lane) or pCMV6-ENTRY GTF2F1 ([RC201294], Right lane) cDNA for 48 hrs and lysed. Equivalent amounts of cell lysates (5 ug per lane) were separated by SDS-PAGE and immunoblotted with anti-GTF2F1. Positive lysates [LY400767] (100ug) and [LC400767] (20ug) can be purchased separately from OriGene.



Western blot analysis of extracts (35ug) from 9 different cell lines by using anti-GTF2F1 monoclonal antibody (HepG2: human; HeLa: human; SVT2: mouse; A549: human; COS7: monkey; Jurkat: human; MDCK: canine; PC12: rat; MCF7: human).



Anti-GTF2F1 mouse monoclonal antibody ([TA503373]) immunofluorescent staining of COS7 cells transiently transfected by pCMV6-ENTRY GTF2F1 ([RC201294]).



HEK293T cells transfected with either [RC201294] overexpress plasmid (Red) or empty vector control plasmid (Blue) were immunostained by anti-GTF2F1 antibody ([TA503373]), and then analyzed by flow cytometry.