

Product datasheet for **CF503357**

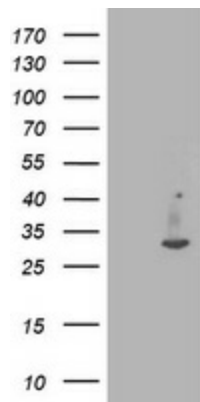
IFI35 Mouse Monoclonal Antibody [Clone ID: OTI2B9]

Product data:

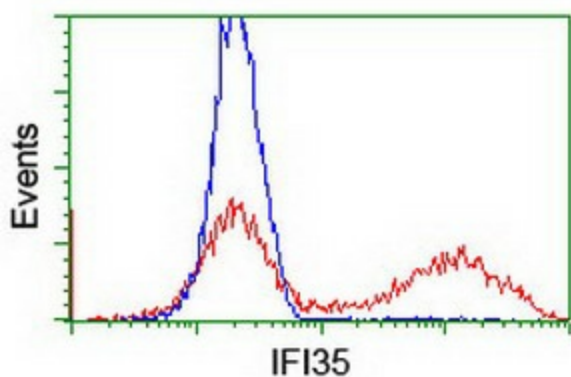
Product Type:	Primary Antibodies
Clone Name:	OTI2B9
Applications:	FC, WB
Recommended Dilution:	WB 1:2000, FLOW 1:100
Reactivity:	Human
Host:	Mouse
Isotype:	IgG2a
Clonality:	Monoclonal
Immunogen:	Full length human recombinant protein of human IFI35(NP_005524) produced in HEK293T cell.
Formulation:	Lyophilized powder (original buffer 1X PBS, pH 7.3, 8% trehalose)
Reconstitution Method:	For reconstitution, we recommend adding 100uL distilled water to a final antibody concentration of about 1 mg/mL. To use this carrier-free antibody for conjugation experiment, we strongly recommend performing another round of desalting process. (OriGene recommends Zeba Spin Desalting Columns, 7KMWCO from Thermo Scientific)
Purification:	Purified from mouse ascites fluids or tissue culture supernatant by affinity chromatography (protein A/G)
Conjugation:	Unconjugated
Storage:	Store at -20°C as received.
Stability:	Stable for 12 months from date of receipt.
Predicted Protein Size:	31.6 kDa
Gene Name:	interferon induced protein 35
Database Link:	NP_005524 Entrez Gene 3430 Human P80217
Synonyms:	IFP35



[View online »](#)

Product images:

HEK293T cells were transfected with the pCMV6-ENTRY control (Left lane) or pCMV6-ENTRY IFI35 ([RC200929], Right lane) cDNA for 48 hrs and lysed. Equivalent amounts of cell lysates (5 ug per lane) were separated by SDS-PAGE and immunoblotted with anti-IFI35. Positive lysates [LY401696] (100ug) and [LC401696] (20ug) can be purchased separately from OriGene.



HEK293T cells transfected with either [RC200929] overexpress plasmid (Red) or empty vector control plasmid (Blue) were immunostained by anti-IFI35 antibody ([TA503357]), and then analyzed by flow cytometry.