

## Product datasheet for **CF503333**

### NUDT9 Mouse Monoclonal Antibody [Clone ID: OTI7A12]

#### Product data:

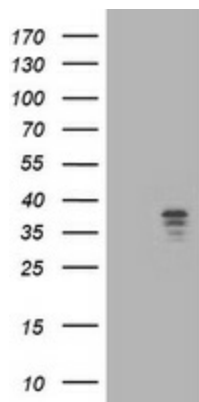
Product Type:	Primary Antibodies
Clone Name:	OTI7A12
Applications:	FC, IF, IHC, WB
Recommended Dilution:	WB 1:2000, IHC 1:150, IF 1:100, FLOW 1:100
Reactivity:	Human, Mouse, Rat
Host:	Mouse
Isotype:	IgG2a
Clonality:	Monoclonal
Immunogen:	Full length human recombinant protein of human NUDT9(NP_076952) produced in HEK293T cell.
Formulation:	Lyophilized powder (original buffer 1X PBS, pH 7.3, 8% trehalose)
Reconstitution Method:	For reconstitution, we recommend adding 100uL distilled water to a final antibody concentration of about 1 mg/mL. To use this carrier-free antibody for conjugation experiment, we strongly recommend performing another round of desalting process. (OriGene recommends Zeba Spin Desalting Columns, 7KMWCO from Thermo Scientific)
Purification:	Purified from mouse ascites fluids or tissue culture supernatant by affinity chromatography (protein A/G)
Conjugation:	Unconjugated
Storage:	Store at -20°C as received.
Stability:	Stable for 12 months from date of receipt.
Predicted Protein Size:	38.9 kDa
Gene Name:	nudix hydrolase 9
Database Link:	<a href="#">NP_076952</a> <a href="#">Entrez Gene 74167 Mouse</a> <a href="#">Entrez Gene 305149 Rat</a> <a href="#">Entrez Gene 53343 Human</a> <a href="#">Q9BW91</a>
Synonyms:	NUDT10
Protein Families:	Druggable Genome, Ion Channels: Other



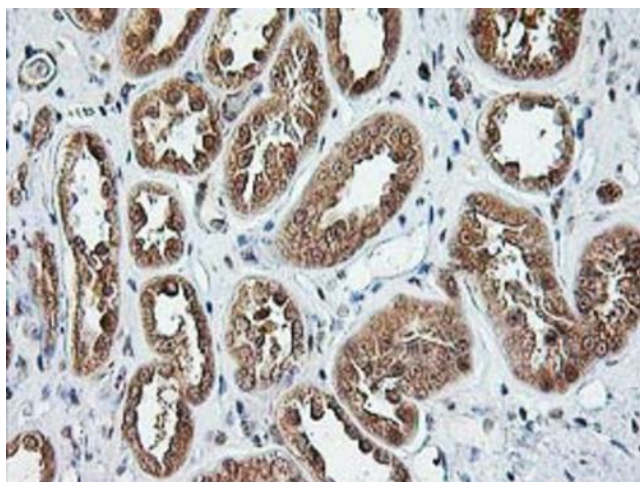
[View online »](#)

Protein Pathways: Purine metabolism

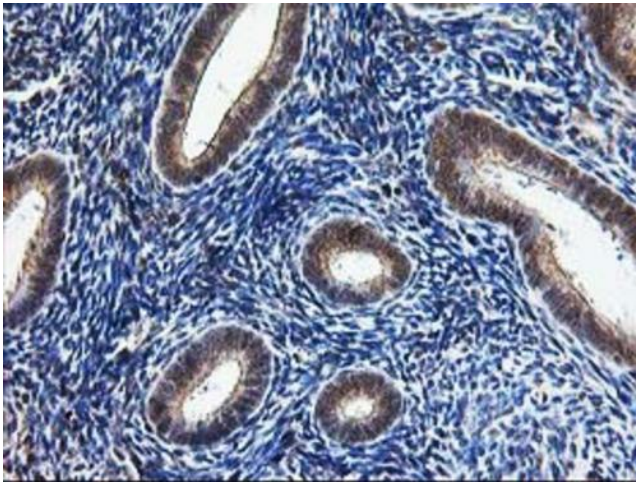
### Product images:



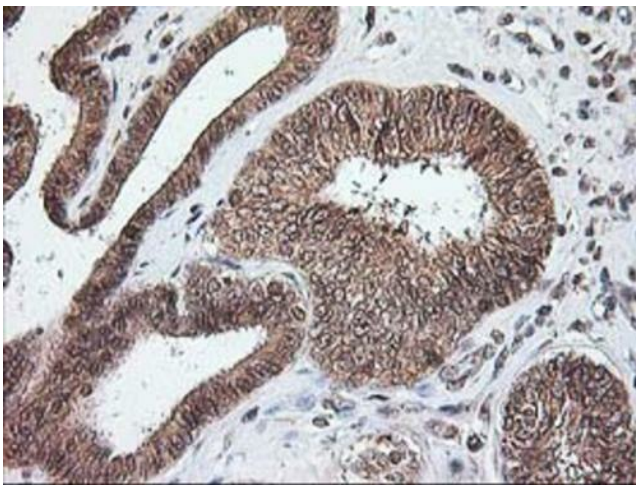
HEK293T cells were transfected with the pCMV6-ENTRY control (Cat# [PS100001], Left lane) or pCMV6-ENTRY NUDT9 (Cat# [RC222894], Right lane) cDNA for 48 hrs and lysed. Equivalent amounts of cell lysates (5 ug per lane) were separated by SDS-PAGE and immunoblotted with anti-NUDT9 (Cat# [TA503333]). Positive lysates [LY402975] (100ug) and [LC402975] (20ug) can be purchased separately from OriGene.



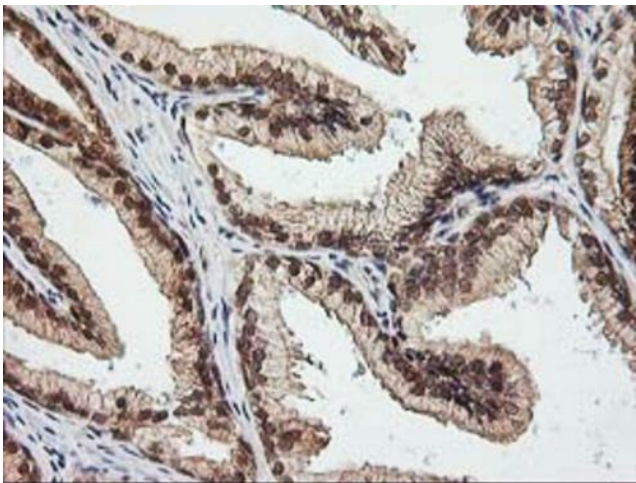
Immunohistochemical staining of paraffin-embedded Human Kidney tissue within the normal limits using anti-NUDT9 mouse monoclonal antibody. (Heat-induced epitope retrieval by 10mM citric buffer, pH6.0, 100°C for 10min, [TA503333])



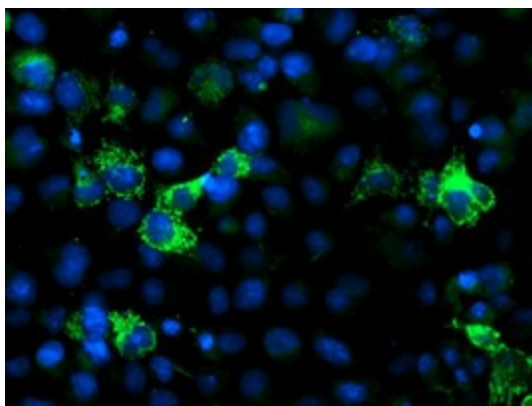
Immunohistochemical staining of paraffin-embedded Human endometrium tissue within the normal limits using anti-NUDT9 mouse monoclonal antibody. (Heat-induced epitope retrieval by 10mM citric buffer, pH6.0, 100°C for 10min, [TA503333])



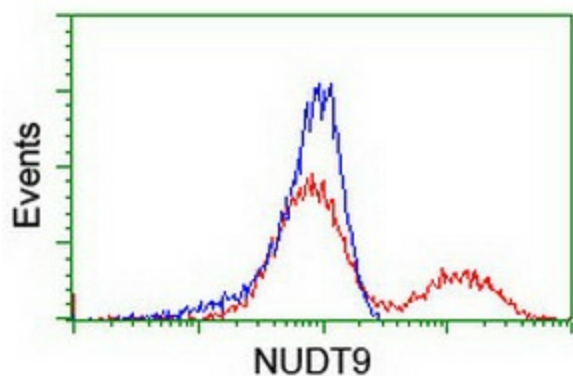
Immunohistochemical staining of paraffin-embedded Adenocarcinoma of Human endometrium tissue using anti-NUDT9 mouse monoclonal antibody. (Heat-induced epitope retrieval by 10mM citric buffer, pH6.0, 100°C for 10min, [TA503333])



Immunohistochemical staining of paraffin-embedded Human prostate tissue within the normal limits using anti-NUDT9 mouse monoclonal antibody. (Heat-induced epitope retrieval by 10mM citric buffer, pH6.0, 100°C for 10min, [TA503333])



Anti-NUDT9 mouse monoclonal antibody ([TA503333]) immunofluorescent staining of COS7 cells transiently transfected by pCMV6-ENTRY NUDT9 ([RC222894]).



HEK293T cells transfected with either [RC222894] overexpress plasmid (Red) or empty vector control plasmid (Blue) were immunostained by anti-NUDT9 antibody ([TA503333]), and then analyzed by flow cytometry.