

Product datasheet for **CF503321**

CARKL (SHPK) Mouse Monoclonal Antibody [Clone ID: OTI2A12]

Product data:

Product Type:	Primary Antibodies
Clone Name:	OTI2A12
Applications:	FC, WB
Recommended Dilution:	WB 1:2000, FLOW 1:100
Reactivity:	Human, Mouse, Rat
Host:	Mouse
Isotype:	IgG1
Clonality:	Monoclonal
Immunogen:	Full length human recombinant protein of human SHPK(NP_037408) produced in HEK293 cell.
Formulation:	Lyophilized powder (original buffer 1X PBS, pH 7.3, 8% trehalose)
Reconstitution Method:	For reconstitution, we recommend adding 100uL distilled water to a final antibody concentration of about 1 mg/mL. To use this carrier-free antibody for conjugation experiment, we strongly recommend performing another round of desalting process. (OriGene recommends Zeba Spin Desalting Columns, 7KMWCO from Thermo Scientific)
Purification:	Purified from mouse ascites fluids or tissue culture supernatant by affinity chromatography (protein A/G)
Storage:	Store at -20°C as received.
Stability:	Stable for 12 months from date of receipt.
Predicted Protein Size:	51.3 kDa
Gene Name:	Homo sapiens sedoheptulokinase (SHPK), mRNA.
Database Link:	NP_037408 Entrez Gene 74637 MouseEntrez Gene 287479 RatEntrez Gene 23729 Human



[View online »](#)

Background:

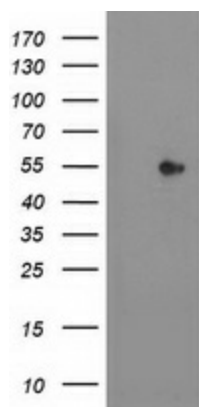
The protein encoded by this gene has weak homology to several carbohydrate kinases, a class of proteins involved in the phosphorylation of sugars as they enter a cell, inhibiting return across the cell membrane. Sequence variation between this novel gene and known carbohydrate kinases suggests the possibility of a different substrate, cofactor or changes in kinetic properties distinguishing it from other carbohydrate kinases. The gene resides in a region commonly deleted in cystinosis patients, suggesting a role as a modifier for the cystinosis phenotype. The genomic region is also rich in Alu repetitive sequences, frequently involved in chromosomal rearrangements. [provided by RefSeq]. COMPLETENESS: complete on the 3' end.

Synonyms:

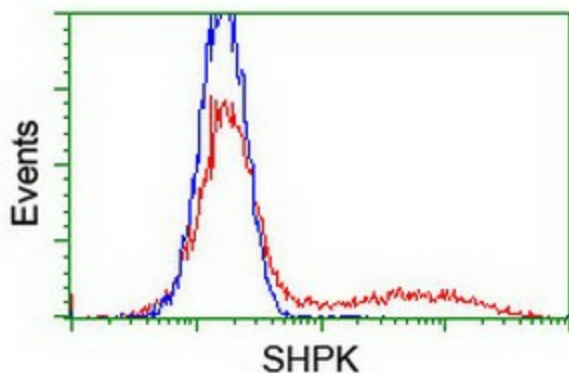
CARKL; SHK

Protein Families:

Druggable Genome

Product images:

HEK293T cells were transfected with the pCMV6-ENTRY control (Left lane) or pCMV6-ENTRY SHPK [RC204421], Right lane) cDNA for 48 hrs and lysed. Equivalent amounts of cell lysates (5 ug per lane) were separated by SDS-PAGE and immunoblotted with anti-SHPK. Positive lysates [LY415695] (100ug) and [LC415695] (20ug) can be purchased separately from OriGene.



HEK293T cells transfected with either [RC204421] overexpress plasmid (Red) or empty vector control plasmid (Blue) were immunostained by anti-SHPK antibody ([TA503321]), and then analyzed by flow cytometry.