

Product datasheet for **CF503320**

MCAK (KIF2C) Mouse Monoclonal Antibody [Clone ID: OT11C5]

Product data:

Product Type:	Primary Antibodies
Clone Name:	OT11C5
Applications:	FC, IF, WB
Recommended Dilution:	WB 1:500~2000, IHC 1:150, IF 1:100, FLOW 1:100
Reactivity:	Human, Rat, Monkey, Mouse
Host:	Mouse
Isotype:	IgG1
Clonality:	Monoclonal
Immunogen:	Full length human recombinant protein of human KIF2C(NP_006836) produced in HEK293T cell.
Formulation:	Lyophilized powder (original buffer 1X PBS, pH 7.3, 8% trehalose)
Reconstitution Method:	For reconstitution, we recommend adding 100uL distilled water to a final antibody concentration of about 1 mg/mL. To use this carrier-free antibody for conjugation experiment, we strongly recommend performing another round of desalting process. (OriGene recommends Zeba Spin Desalting Columns, 7KMWCO from Thermo Scientific)
Purification:	Purified from mouse ascites fluids or tissue culture supernatant by affinity chromatography (protein A/G)
Conjugation:	Unconjugated
Storage:	Store at -20°C as received.
Stability:	Stable for 12 months from date of receipt.
Predicted Protein Size:	81.1 kDa
Gene Name:	kinesin family member 2C
Database Link:	NP_006836 Entrez Gene 73804 Mouse Entrez Gene 171529 Rat Entrez Gene 705381 Monkey Entrez Gene 11004 Human Q99661



[View online »](#)

Background:

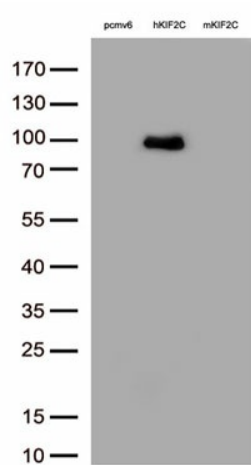
The protein encoded by this gene is a member of kinesin-like protein family. Proteins of this family are microtubule-dependent molecular motors that transport organelles within cells and move chromosomes during cell division. This protein is important for anaphase chromosome segregation and may be required to coordinate the onset of sister centromere separation. [provided by RefSeq]

Synonyms:

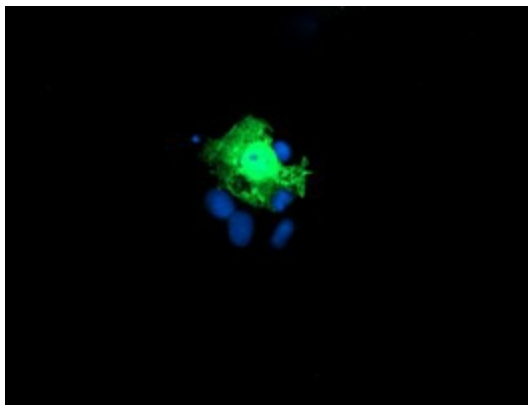
CT139; KNSL6; MCAK

Protein Families:

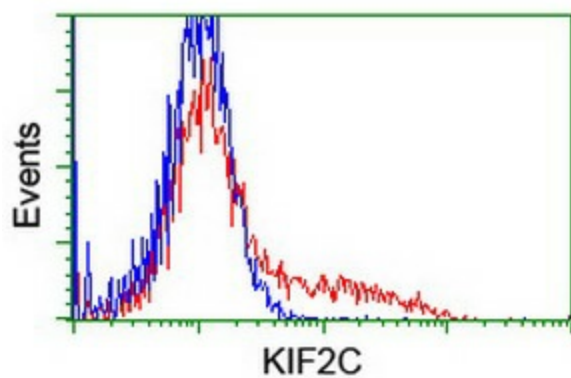
Druggable Genome

Product images:


HEK293T cells were transfected with the pCMV6-ENTRY control (Left lane) or pCMV6-ENTRY human KIF2C ([RC200254], Middle lane) cDNA or pCMV6-ENTRY mouse KIF2C ([MR210280], Right lane) cDNA for 48 hrs and lysed. Equivalent amounts of cell lysates (5 ug per lane) were separated by SDS-PAGE and immunoblotted with anti-KIF2C. ([TA503320], 1:500)



Anti-KIF2C mouse monoclonal antibody ([TA503320]) immunofluorescent staining of COS7 cells transiently transfected by pCMV6-ENTRY KIF2C ([RC200254]).



HEK293T cells transfected with either [RC200254] overexpress plasmid (Red) or empty vector control plasmid (Blue) were immunostained by anti-KIF2C antibody ([TA503320]), and then analyzed by flow cytometry.