

Product datasheet for **CF503316**

LGR5 Mouse Monoclonal Antibody [Clone ID: OTI2A2]

Product data:

Product Type:	Primary Antibodies
Clone Name:	OTI2A2
Applications:	FC, IF, IHC, IP, WB
Recommended Dilution:	WB 1:2000, IHC 1:150, IF 1:100, FLOW 1:100, IP 2ug/500ul
Reactivity:	Human, Mouse, Rat
Host:	Mouse
Isotype:	IgG1
Clonality:	Monoclonal
Immunogen:	Human recombinant protein fragment corresponding to amino acids 250-550 of human LGR5 (NP_003658) produced in HEK293T Cell.
Formulation:	Lyophilized powder (original buffer 1X PBS, pH 7.3, 8% trehalose)
Reconstitution Method:	For reconstitution, we recommend adding 100uL distilled water to a final antibody concentration of about 1 mg/mL. To use this carrier-free antibody for conjugation experiment, we strongly recommend performing another round of desalting process. (OriGene recommends Zeba Spin Desalting Columns, 7KMWCO from Thermo Scientific)
Purification:	Purified from mouse ascites fluids or tissue culture supernatant by affinity chromatography (protein A/G)
Conjugation:	Unconjugated
Storage:	Store at -20°C as received.
Stability:	Stable for 12 months from date of receipt.
Predicted Protein Size:	99.8 kDa
Database Link:	NP_003658 Entrez Gene 14160 Mouse Entrez Gene 299802 Rat
Synonyms:	FEX; GPR49; GPR67; GRP49; HG38
Protein Families:	Druggable Genome, GPCR, Transmembrane



[View online »](#)

Product images:

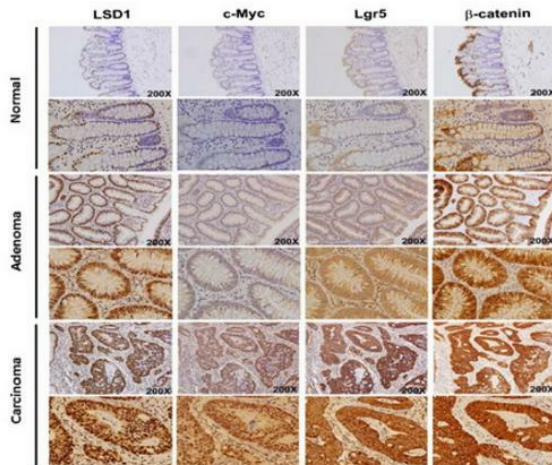


Figure from citation: Positive correlation between LSD1, c-Myc, β-catenin and LGR5 expression in human colorectal tumor tissues. Expression levels of LSD1, LGR5, β-catenin and c-Myc in consecutive sections from normal colon, adenoma and CRC tumor tissues. Dilution: 1:100 [View Citation](#). Heat-induced epitope retrieval by EDTA solution buffer pH 8.0 at 120°C for 3 min.

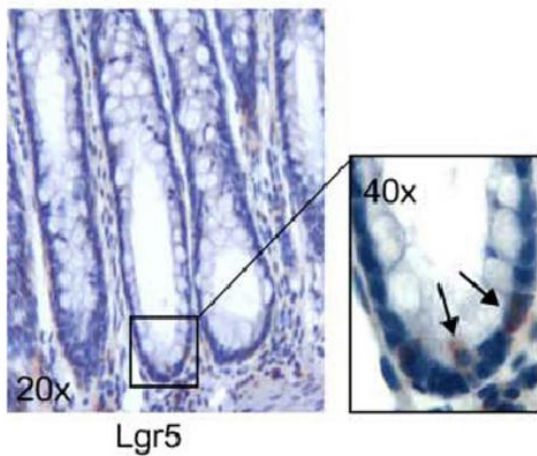


Figure from citation: Immunohistochemical analysis of Lgr5 expression in human normal colon biopsies; Lgr5+ cells are localized at the crypt base, where bona fide stem-like cells home; magnification is indicated in the boxes. Dilution: 1:200 [View Citation](#). Heat-induced epitope retrieval by EDTA solution buffer pH 8.0 at 120°C for 3 min.

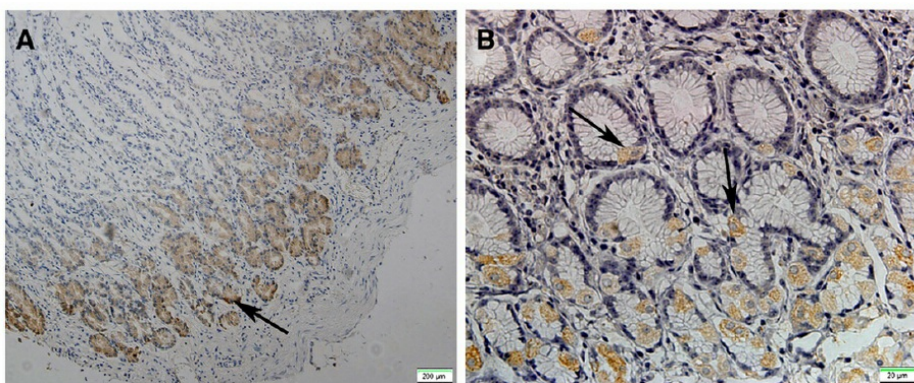
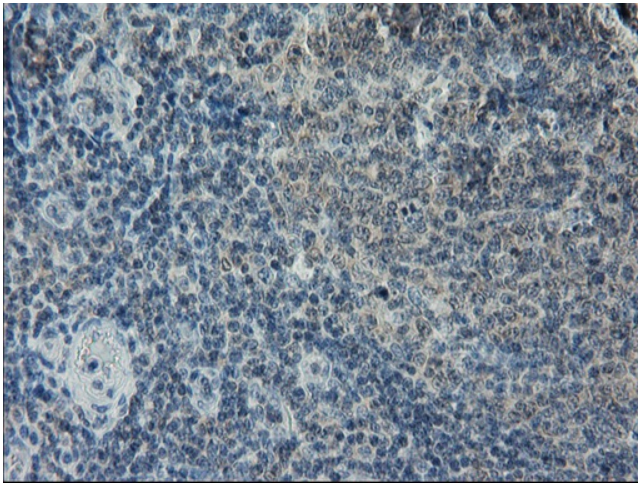
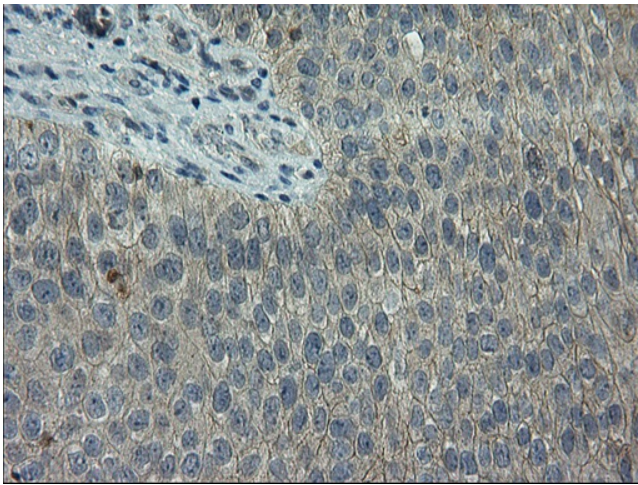


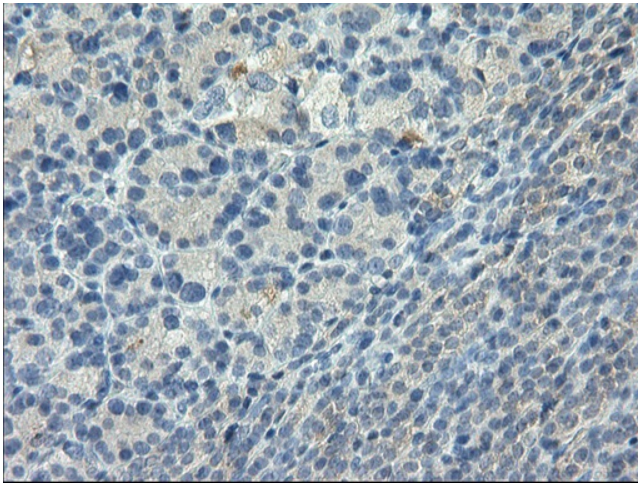
Figure from citation: Immunohistochemical staining of Lgr5 in normal gastric tissues. The normal gastric tissue, 40×magnified (A) and 400× magnified (B). Yellowspots represent the Lgr5 positive cells that are localized only at base of the glands in normal gastric mucosa. The arrows in the pictures show the immunoreactive cells stained in yellow color. [View Citation](#). Heat-induced epitope retrieval by EDTA solution buffer pH 8.0 at 120°C for 3 min.



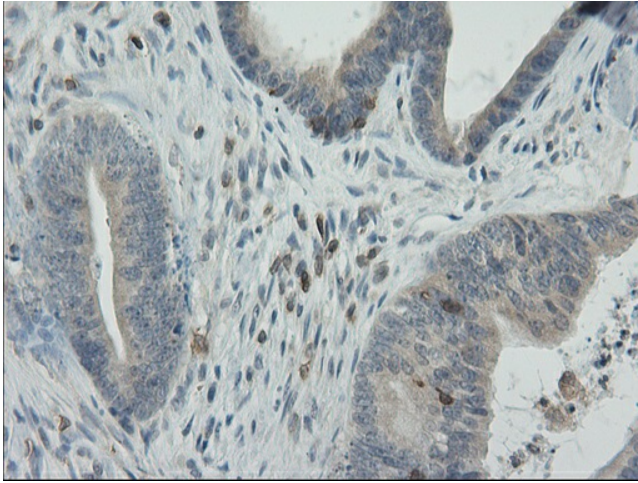
Immunohistochemical staining of paraffin-embedded Human lymph node tissue within the normal limits using anti-LGR5 mouse monoclonal antibody. Heat-induced epitope retrieval by EDTA solution buffer pH 8.0 at 120°C for 3 min.



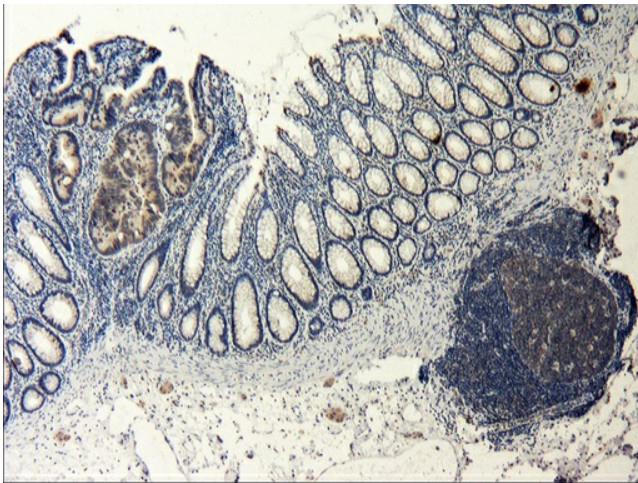
Immunohistochemical staining of paraffin-embedded Carcinoma of Human bladder tissue using anti-LGR5 mouse monoclonal antibody. Heat-induced epitope retrieval by EDTA solution buffer pH 8.0 at 120°C for 3 min.



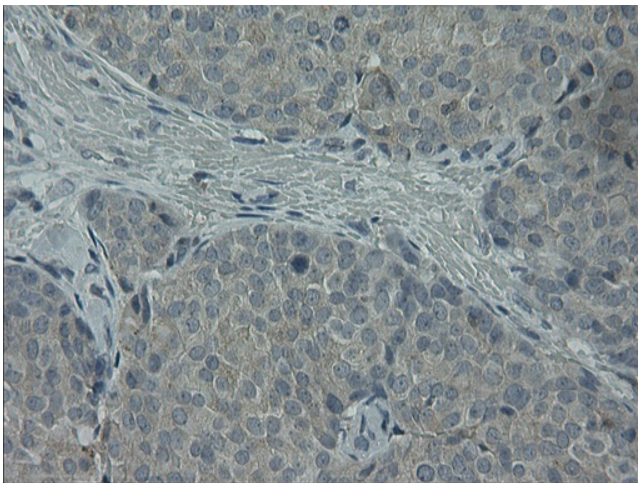
Immunohistochemical staining of paraffin-embedded Carcinoma of Human thyroid tissue using anti-LGR5 mouse monoclonal antibody. Heat-induced epitope retrieval by EDTA solution buffer pH 8.0 at 120°C for 3 min.



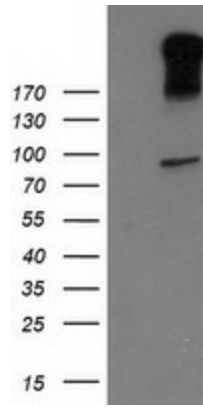
Immunohistochemical staining of paraffin-embedded Adenocarcinoma of Human colon tissue using anti-LGR5 mouse monoclonal antibody. Heat-induced epitope retrieval by EDTA solution buffer pH 8.0 at 120°C for 3 min.



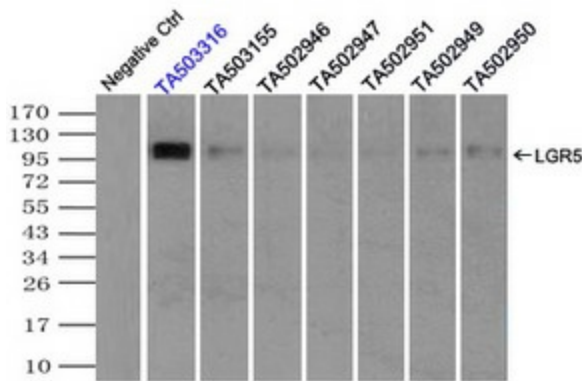
Immunohistochemical staining of paraffin-embedded Human colon tissue within the normal limits using anti-LGR5 mouse monoclonal antibody. Heat-induced epitope retrieval by EDTA solution buffer pH 8.0 at 120°C for 3 min.



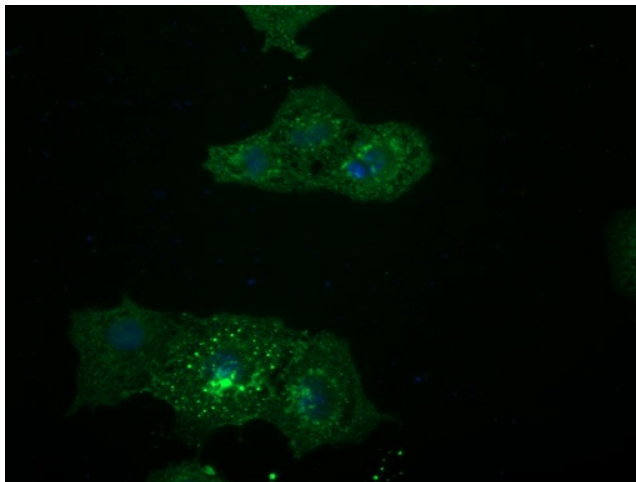
Immunohistochemical staining of paraffin-embedded Adenocarcinoma of Human breast tissue using anti-LGR5 mouse monoclonal antibody. Heat-induced epitope retrieval by EDTA solution buffer pH 8.0 at 120°C for 3 min.



HEK293T cells were transfected with the pCMV6-ENTRY control (Cat# [PS100001], Left lane) or pCMV6-ENTRY LGR5 (Cat# [RC212825], Right lane) cDNA for 48 hrs and lysed. Equivalent amounts of cell lysates (5 ug per lane) were separated by SDS-PAGE and immunoblotted with anti-LGR5 (Cat# [TA503316]). Positive lysates [LY401213] (100ug) and [LC401213] (20ug) can be purchased separately from OriGene.



Immunoprecipitation (IP) of LGR5 by using TrueMab monoclonal anti-LGR5 antibodies (Negative control: IP without adding anti-LGR5 antibody.). For each experiment, 500ul of DDK tagged LGR5 overexpression lysates (at 1:5 dilution with HEK293T lysate), 2ug of anti-LGR5 antibody and 20ul (0.1mg) of goat anti-mouse conjugated magnetic beads were mixed and incubated overnight. After extensive wash to remove any non-specific binding, the immunoprecipitated products were analyzed with rabbit anti-DDK polyclonal antibody.



Anti-LGR5 mouse monoclonal antibody ([TA503316]) immunofluorescent staining of COS7 cells transiently transfected by pCMV6-ENTRY LGR5 ([RC212825]).

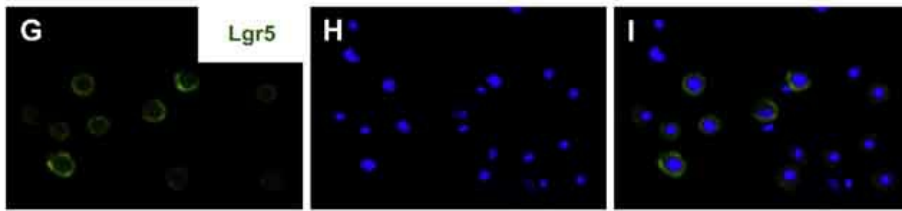
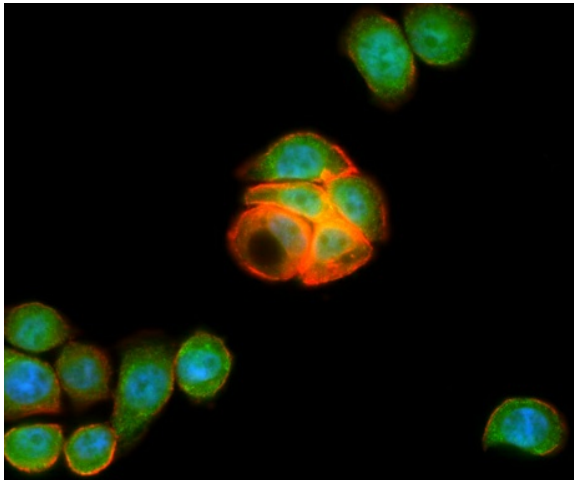
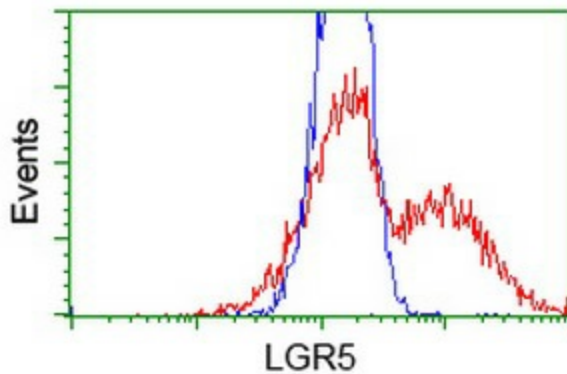


Figure from citation: Immunocytochemistry of epithelium stem cell phenotype. Isolated dental epithelium following 5-day culture, overwhelmingly expressed Lgr5. Dilution: 1:100 [View Citation](#)



Immunofluorescent staining of HT29 cells using anti-LGR5 mouse monoclonal antibody ([TA503316], green). Actin filaments were labeled with TRITC-phalloidin (red), and nuclear with DAPI (blue).



HEK293T cells transfected with either [RC212825] overexpress plasmid (Red) or empty vector control plasmid (Blue) were immunostained by anti-LGR5 antibody ([TA503316]), and then analyzed by flow cytometry.

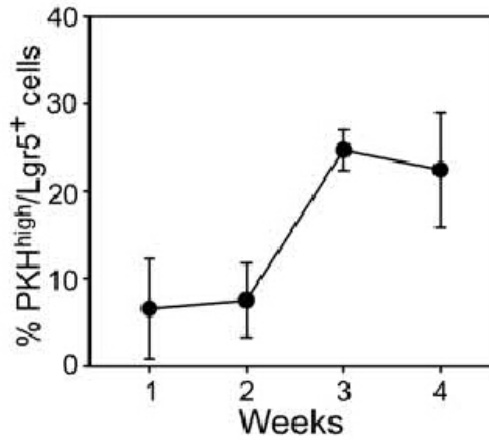


Figure from citation: Cytofluorimetric analysis of Lgr5 expression by PKH high cells over 4 weeks of culture. Data are expressed as percent mean values (6 SD) of 5 consecutive experiments. Dilution: 1:400 [View Citation](#)

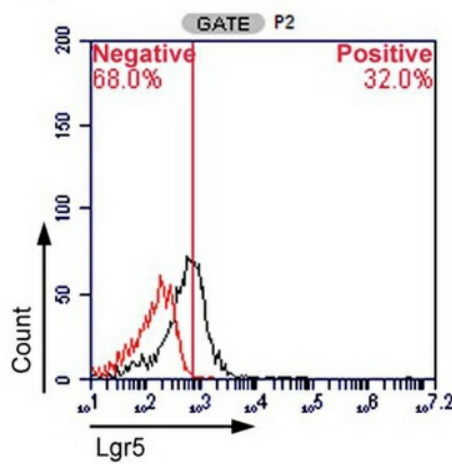


Figure from citation: Flow cytometry of the SB cells. The G4 region was further divided into P1 and P2. Lgr5, a stem cell marker, was expressed by 32% of the P2 population. Black: staining with Lgr5; red: staining with the isotype control. [View Citation](#)

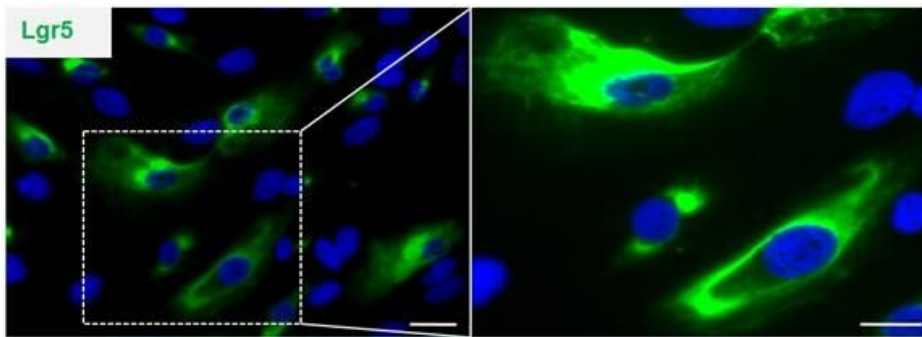


Figure from citation: [Nature] Cells expressing the stem cell marker Lgr5 was detected by immunostaining of hCECs in 2D culture. [View Citation](#)

Pubmed id: 27398792

Memo: Human; IF