

Product datasheet for **CF503313**

Nudel (NDEL1) Mouse Monoclonal Antibody [Clone ID: OTI5C2]

Product data:

Product Type:	Primary Antibodies
Clone Name:	OTI5C2
Applications:	IF, WB
Recommended Dilution:	WB 1:2000, IF 1:100
Reactivity:	Human, Mouse, Rat
Host:	Mouse
Isotype:	IgG2a
Clonality:	Monoclonal
Immunogen:	Full length human recombinant protein of human NDEL1(NP_001020750) produced in HEK293 cell.
Formulation:	Lyophilized powder (original buffer 1X PBS, pH 7.3, 8% trehalose)
Reconstitution Method:	For reconstitution, we recommend adding 100uL distilled water to a final antibody concentration of about 1 mg/mL. To use this carrier-free antibody for conjugation experiment, we strongly recommend performing another round of desalting process. (OriGene recommends Zeba Spin Desalting Columns, 7KMWCO from Thermo Scientific)
Purification:	Purified from mouse ascites fluids or tissue culture supernatant by affinity chromatography (protein A/G)
Conjugation:	Unconjugated
Storage:	Store at -20°C as received.
Stability:	Stable for 12 months from date of receipt.
Predicted Protein Size:	36.9 kDa
Gene Name:	nudE neurodevelopment protein 1 like 1
Database Link:	NP_001020750 Entrez Gene 83431 Mouse Entrez Gene 170845 Rat Entrez Gene 81565 Human Q9GZM8



[View online »](#)

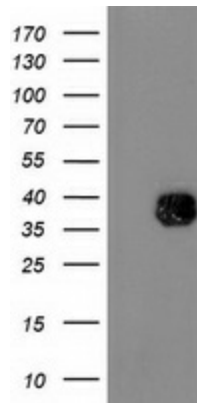
Background:

This gene encodes a thiol-activated peptidase that is phosphorylated in M phase of the cell cycle. Phosphorylation regulates the cell cycle-dependent distribution of this protein, with a fraction of the protein bound strongly to centrosomes in interphase and localized to mitotic spindles in early M phase. Overall, this protein plays a role in nervous system development. Alternate transcriptional splice variants, encoding different isoforms, have been characterized. [provided by RefSeq]

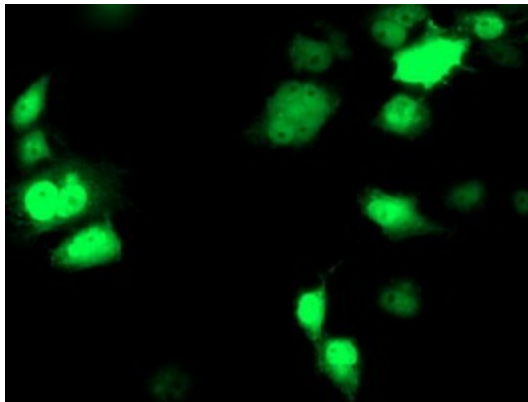
Synonyms:

EOPA; MITAP1; NDE1L1; NDE2; NUDEL

Product images:



HEK293T cells were transfected with the pCMV6-ENTRY control (Left lane) or pCMV6-ENTRY NDEL1 ([RC212323], Right lane) cDNA for 48 hrs and lysed. Equivalent amounts of cell lysates (5 ug per lane) were separated by SDS-PAGE and immunoblotted with anti-NDEL1. Positive lysates [LY422448] (100ug) and [LC422448] (20ug) can be purchased separately from OriGene.



Anti-NDEL1 mouse monoclonal antibody ([TA503313]) immunofluorescent staining of COS7 cells transiently transfected by pCMV6-ENTRY NDEL1 ([RC212323]).