

Product datasheet for **CF503289**

DPP3 Mouse Monoclonal Antibody [Clone ID: OTI 1C11]

Product data:

Product Type:	Primary Antibodies
Clone Name:	OTI 1C11
Applications:	FC, WB
Recommended Dilution:	WB 1:2000, FLOW 1:100
Reactivity:	Human, Mouse, Rat
Host:	Mouse
Isotype:	IgG1
Clonality:	Monoclonal
Immunogen:	Full length human recombinant protein of human DPP3 (NP_005691) produced in HEK293T cell.
Formulation:	Lyophilized powder (original buffer 1X PBS, pH 7.3, 8% trehalose)
Reconstitution Method:	For reconstitution, we recommend adding 100uL distilled water to a final antibody concentration of about 1 mg/mL. To use this carrier-free antibody for conjugation experiment, we strongly recommend performing another round of desalting process. (OriGene recommends Zeba Spin Desalting Columns, 7KMWCO from Thermo Scientific)
Purification:	Purified from mouse ascites fluids or tissue culture supernatant by affinity chromatography (protein A/G)
Conjugation:	Unconjugated
Storage:	Store at -20°C as received.
Stability:	Stable for 12 months from date of receipt.
Predicted Protein Size:	82.4 kDa
Gene Name:	dipeptidyl peptidase 3
Database Link:	NP_005691 Entrez Gene 75221 Mouse Entrez Gene 10072 Human Q9NY33



[View online »](#)

Background:

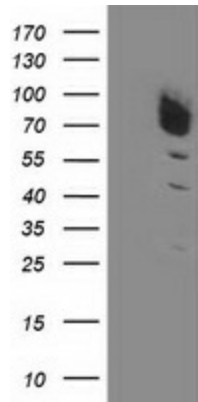
This gene encodes a protein that is a member of the M49 family of metallopeptidases. This cytoplasmic protein binds a single zinc ion with its zinc-binding motif (HELLGH) and has post-proline dipeptidyl aminopeptidase activity, cleaving Xaa-Pro dipeptides from the N-termini of proteins. Increased activity of this protein is associated with endometrial and ovarian cancers. Alternatively spliced transcript variants have been found for this gene. [provided by RefSeq, Feb 2012]

Synonyms:

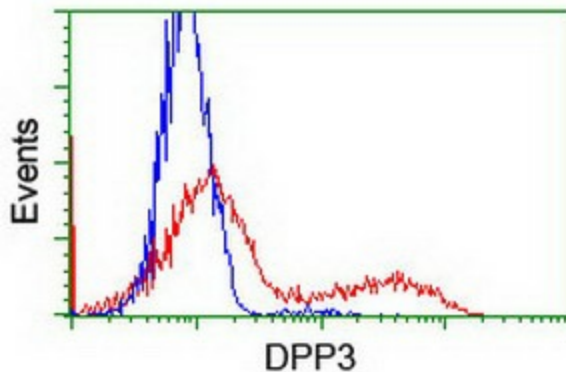
DPPIII

Protein Families:

Druggable Genome, Protease

Product images:

HEK293T cells were transfected with the pCMV6-ENTRY control (Left lane) or pCMV6-ENTRY DPP3 ([RC219658], Right lane) cDNA for 48 hrs and lysed. Equivalent amounts of cell lysates (5 ug per lane) were separated by SDS-PAGE and immunoblotted with anti-DPP3. Positive lysates [LY417120] (100ug) and [LC417120] (20ug) can be purchased separately from OriGene.



HEK293T cells transfected with either [RC219658] overexpress plasmid (Red) or empty vector control plasmid (Blue) were immunostained by anti-DPP3 antibody ([TA503289]), and then analyzed by flow cytometry.