

Product datasheet for **CF503274**

OBFC1 (STN1) Mouse Monoclonal Antibody [Clone ID: OT11C5]

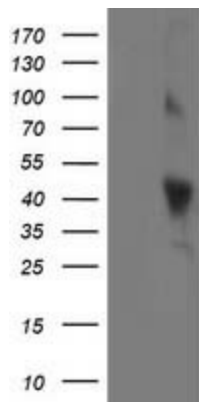
Product data:

Product Type:	Primary Antibodies
Clone Name:	OT11C5
Applications:	FC, IF, WB
Recommend Dilution:	WB 1:2000, IF 1:100, FLOW 1:100
Reactivity:	Human
Host:	Mouse
Isotype:	IgG1
Clonality:	Monoclonal
Immunogen:	Full length human recombinant protein of human OBFC1 (NP_079204) produced in HEK293T cell.
Formulation:	Lyophilized powder (original buffer 1X PBS, pH 7.3, 8% trehalose)
Reconstitution Method:	For reconstitution, we recommend adding 100uL distilled water to a final antibody concentration of about 1 mg/mL. To use this carrier-free antibody for conjugation experiment, we strongly recommend performing another round of desalting process. (OriGene recommends Zeba Spin Desalting Columns, 7KMWCO from Thermo Scientific)
Purification:	Purified from mouse ascites fluids or tissue culture supernatant by affinity chromatography (protein A/G)
Storage:	Store at -20°C as received.
Stability:	Stable for 12 months from date of receipt.
Predicted Protein Size:	41.9 kDa
Gene Name:	Homo sapiens STN1 subunit of CST complex (STN1), mRNA.
Database Link:	NP_079204 Entrez Gene 79991 Human
Background:	OBFC1 and C17ORF68 (MIM 613129) are subunits of an alpha accessory factor (AAF) that stimulates the activity of DNA polymerase-alpha-primase (see MIM 176636), the enzyme that initiates DNA replication (Casteel et al., 2009 [PubMed 19119139]). OBFC1 also appears to function in a telomere-associated complex with C17ORF68 and TEN1
Synonyms:	AAF-44; AAF44; bA541N10.2; RPA-32; STN1

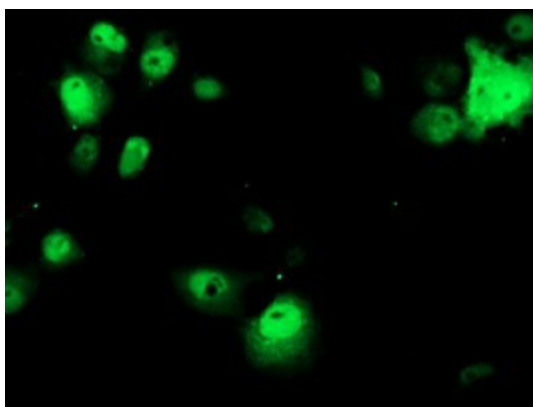


[View online »](#)

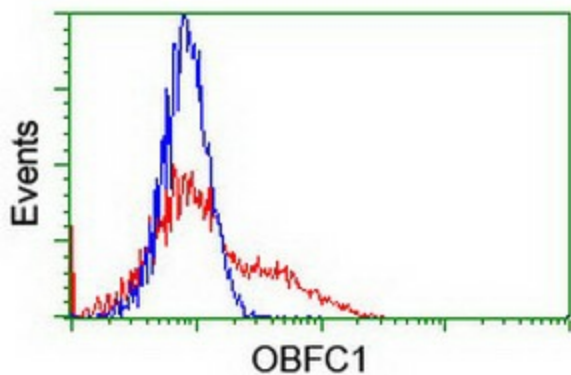
Product images:



HEK293T cells were transfected with the pCMV6-ENTRY control (Left lane) or pCMV6-ENTRY OBFC1 ([RC200778], Right lane) cDNA for 48 hrs and lysed. Equivalent amounts of cell lysates (5 ug per lane) were separated by SDS-PAGE and immunoblotted with anti-OBFC1. Positive lysates [LY410967] (100ug) and [LC410967] (20ug) can be purchased separately from OriGene.



Anti-OBFC1 mouse monoclonal antibody ([TA503274]) immunofluorescent staining of COS7 cells transiently transfected by pCMV6-ENTRY OBFC1 ([RC200778]).



HEK293T cells transfected with either [RC200778] overexpress plasmid (Red) or empty vector control plasmid (Blue) were immunostained by anti-OBFC1 antibody ([TA503274]), and then analyzed by flow cytometry.