

Product datasheet for **CF503261**

XPF (ERCC4) Mouse Monoclonal Antibody [Clone ID: OTI4E11]

Product data:

Product Type:	Primary Antibodies
Clone Name:	OTI4E11
Applications:	FC, IF, IHC, WB
Recommended Dilution:	WB 1:500~2000, IHC 1:150, IF 1:100, FLOW 1:100
Reactivity:	Human, Mouse
Host:	Mouse
Isotype:	IgG2a
Clonality:	Monoclonal
Immunogen:	Full length human recombinant protein of human ERCC4(NP_005227) produced in HEK293 cell.
Formulation:	Lyophilized powder (original buffer 1X PBS, pH 7.3, 8% trehalose)
Reconstitution Method:	For reconstitution, we recommend adding 100uL distilled water to a final antibody concentration of about 1 mg/mL. To use this carrier-free antibody for conjugation experiment, we strongly recommend performing another round of desalting process. (OriGene recommends Zeba Spin Desalting Columns, 7KMWCO from Thermo Scientific)
Purification:	Purified from mouse ascites fluids or tissue culture supernatant by affinity chromatography (protein A/G)
Conjugation:	Unconjugated
Storage:	Store at -20°C as received.
Stability:	Stable for 12 months from date of receipt.
Predicted Protein Size:	104.3 kDa
Gene Name:	Homo sapiens ERCC excision repair 4, endonuclease catalytic subunit (ERCC4), mRNA.
Database Link:	NP_005227 Entrez Gene 50505 Mouse Entrez Gene 2072 Human Q92889



[View online »](#)

Background:

The protein encoded by this gene forms a complex with ERCC1 and is involved in the 5' incision made during nucleotide excision repair. This complex is a structure specific DNA repair endonuclease that interacts with EME1. Defects in this gene are a cause of xeroderma pigmentosum complementation group F (XP-F), or xeroderma pigmentosum VI (XP6).

Synonyms:

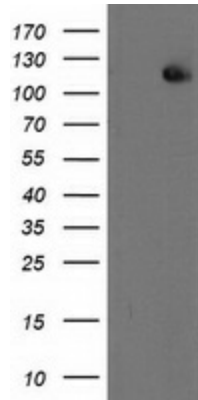
ERCC11; FANCC; RAD1; XFEPS; XPF

Protein Families:

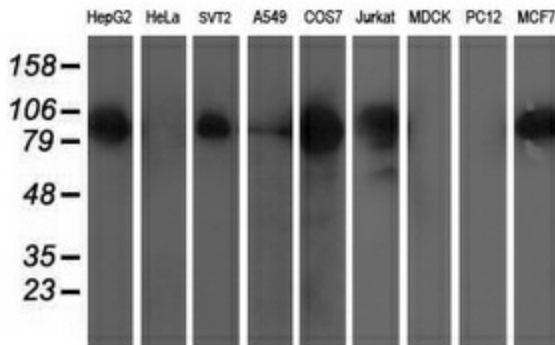
Druggable Genome

Protein Pathways:

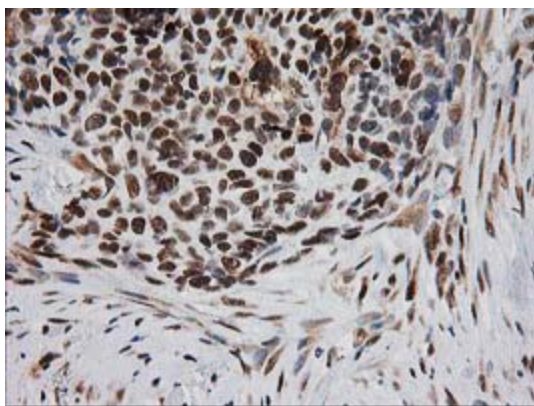
Nucleotide excision repair

Product images:


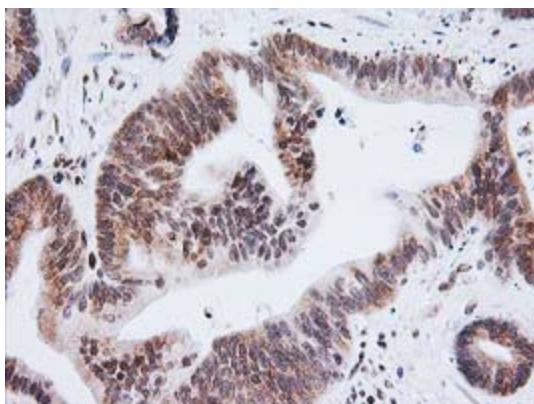
HEK293T cells were transfected with the pCMV6-ENTRY control (Cat# [PS100001], Left lane) or pCMV6-ENTRY ERCC4 (Cat# [RC223300], Right lane) cDNA for 48 hrs and lysed. Equivalent amounts of cell lysates (5 ug per lane) were separated by SDS-PAGE and immunoblotted with anti-ERCC4 (Cat# [TA503261]). Positive lysates [LY401605] (100ug) and [LC401605] (20ug) can be purchased separately from OriGene.



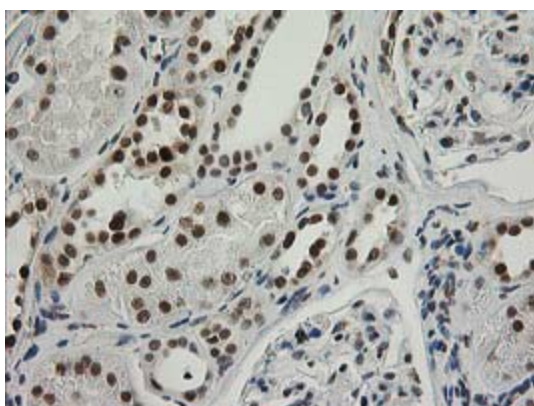
Western blot analysis of extracts (35ug) from 9 different cell lines by using anti-ERCC4 monoclonal antibody.



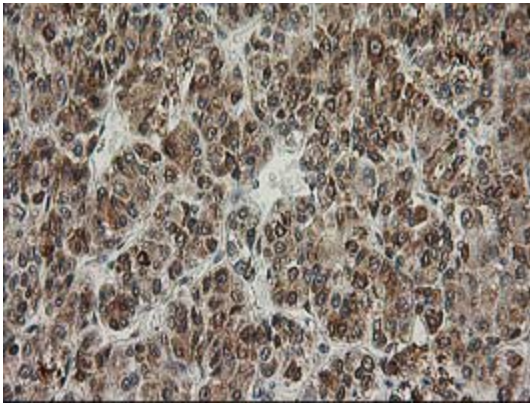
Immunohistochemical staining of paraffin-embedded Adenocarcinoma of Human breast tissue using anti-ERCC4 mouse monoclonal antibody. (Heat-induced epitope retrieval by 10mM citric buffer, pH6.0, 100°C for 10min, [TA503261])



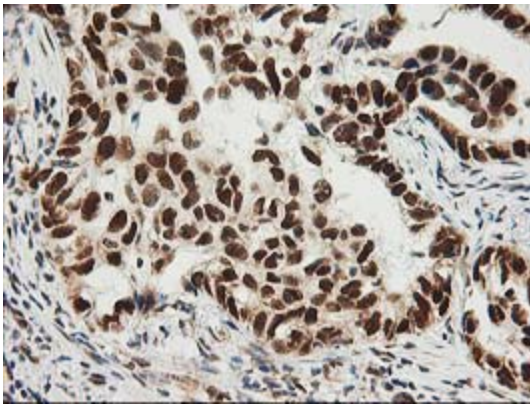
Immunohistochemical staining of paraffin-embedded Adenocarcinoma of Human colon tissue using anti-ERCC4 mouse monoclonal antibody. (Heat-induced epitope retrieval by 10mM citric buffer, pH6.0, 100°C for 10min, [TA503261])



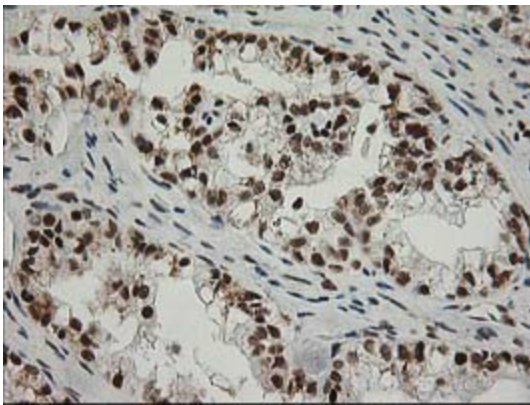
Immunohistochemical staining of paraffin-embedded Human Kidney tissue within the normal limits using anti-ERCC4 mouse monoclonal antibody. (Heat-induced epitope retrieval by 10mM citric buffer, pH6.0, 100°C for 10min, [TA503261])



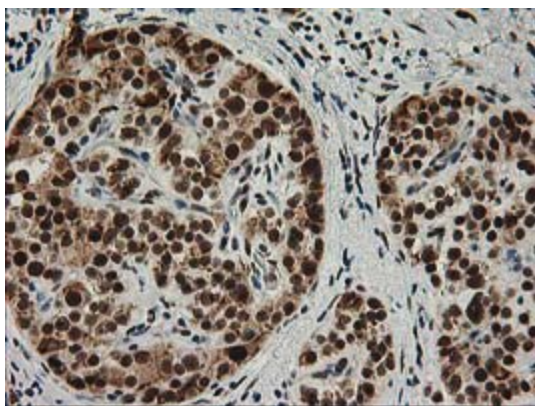
Immunohistochemical staining of paraffin-embedded Carcinoma of Human liver tissue using anti-ERCC4 mouse monoclonal antibody. (Heat-induced epitope retrieval by 10mM citric buffer, pH6.0, 100°C for 10min, [TA503261])



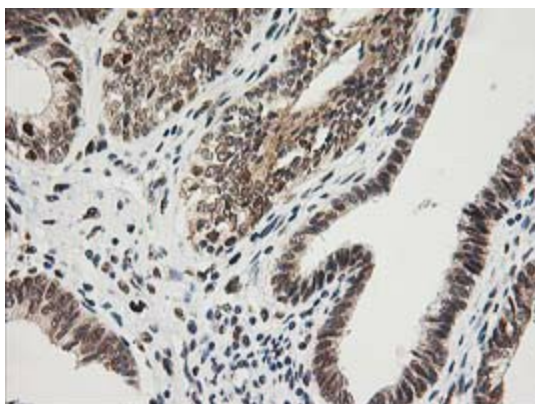
Immunohistochemical staining of paraffin-embedded Carcinoma of Human lung tissue using anti-ERCC4 mouse monoclonal antibody. (Heat-induced epitope retrieval by 10mM citric buffer, pH6.0, 100°C for 10min, [TA503261])



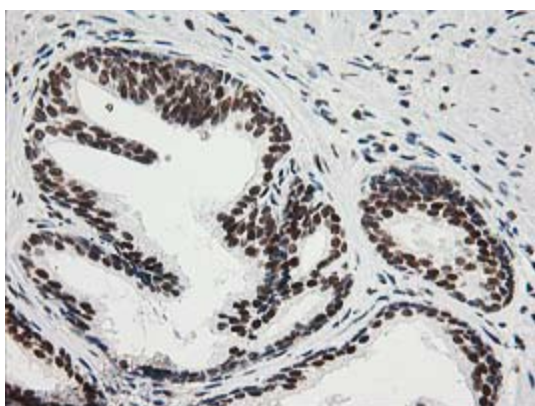
Immunohistochemical staining of paraffin-embedded Adenocarcinoma of Human ovary tissue using anti-ERCC4 mouse monoclonal antibody. (Heat-induced epitope retrieval by 10mM citric buffer, pH6.0, 100°C for 10min, [TA503261])



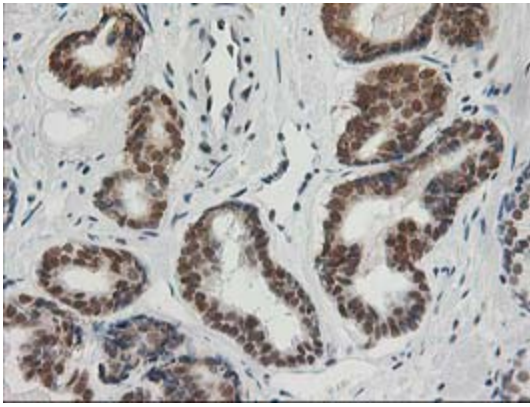
Immunohistochemical staining of paraffin-embedded Carcinoma of Human pancreas tissue using anti-ERCC4 mouse monoclonal antibody. (Heat-induced epitope retrieval by 10mM citric buffer, pH6.0, 100°C for 10min, [TA503261])



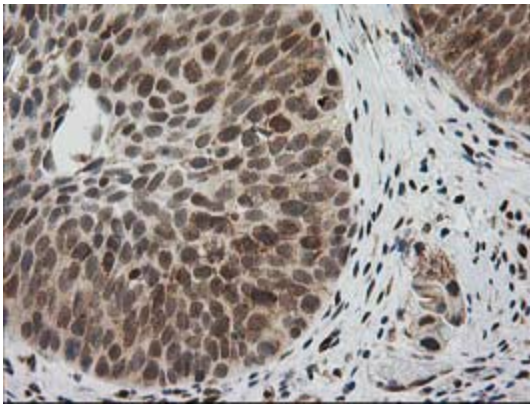
Immunohistochemical staining of paraffin-embedded Adenocarcinoma of Human endometrium tissue using anti-ERCC4 mouse monoclonal antibody. (Heat-induced epitope retrieval by 10mM citric buffer, pH6.0, 100°C for 10min, [TA503261])



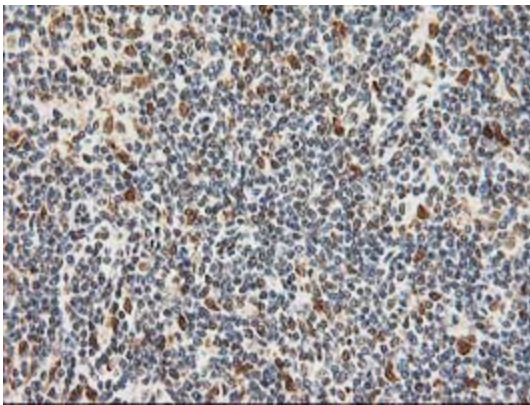
Immunohistochemical staining of paraffin-embedded Human prostate tissue within the normal limits using anti-ERCC4 mouse monoclonal antibody. (Heat-induced epitope retrieval by 10mM citric buffer, pH6.0, 100°C for 10min, [TA503261])



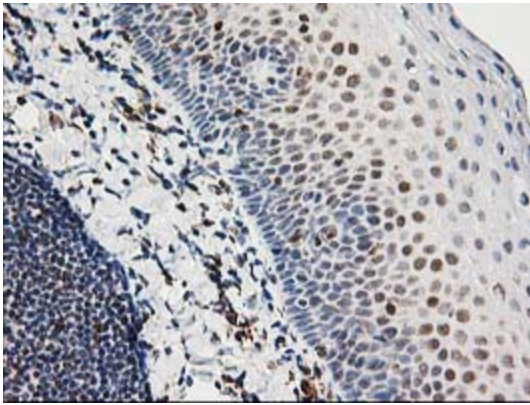
Immunohistochemical staining of paraffin-embedded Carcinoma of Human prostate tissue using anti-ERCC4 mouse monoclonal antibody. (Heat-induced epitope retrieval by 10mM citric buffer, pH6.0, 100°C for 10min, [TA503261])



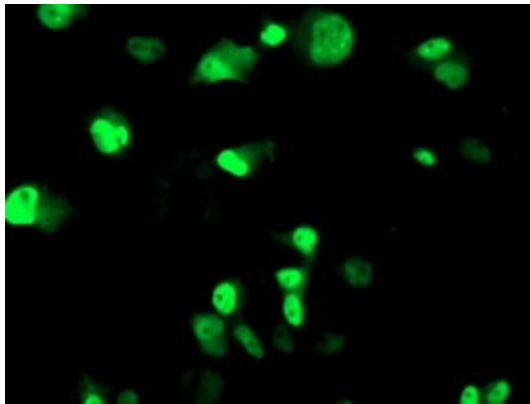
Immunohistochemical staining of paraffin-embedded Carcinoma of Human bladder tissue using anti-ERCC4 mouse monoclonal antibody. (Heat-induced epitope retrieval by 10mM citric buffer, pH6.0, 100°C for 10min, [TA503261])



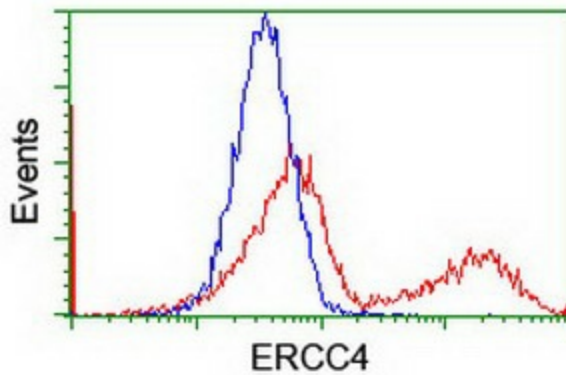
Immunohistochemical staining of paraffin-embedded Human Lymphoma tissue using anti-ERCC4 mouse monoclonal antibody. (Heat-induced epitope retrieval by 10mM citric buffer, pH6.0, 100°C for 10min, [TA503261])



Immunohistochemical staining of paraffin-embedded Human tonsil within the normal limits using anti-ERCC4 mouse monoclonal antibody. (Heat-induced epitope retrieval by 10mM citric buffer, pH6.0, 100°C for 10min, [TA503261])



Anti-ERCC4 mouse monoclonal antibody ([TA503261]) immunofluorescent staining of COS7 cells transiently transfected by pCMV6-ENTRY ERCC4 ([RC223300]).



HEK293T cells transfected with either [RC223300] overexpress plasmid (Red) or empty vector control plasmid (Blue) were immunostained by anti-ERCC4 antibody ([TA503261]), and then analyzed by flow cytometry.