

## Product datasheet for **CF503259**

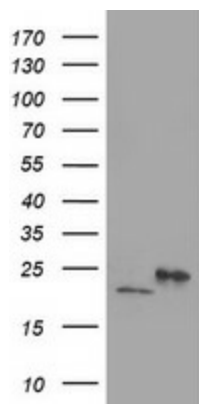
### **DHFRL1 (DHFR2) Mouse Monoclonal Antibody [Clone ID: OT11E2]**

#### **Product data:**

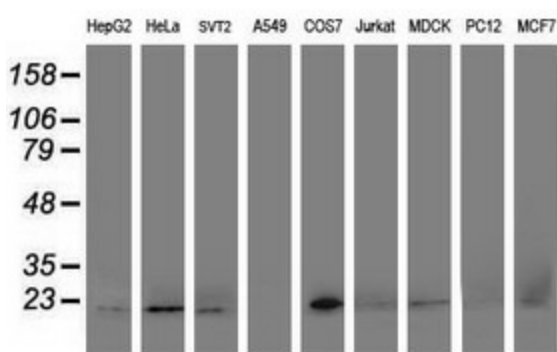
<b>Product Type:</b>	Primary Antibodies
<b>Clone Name:</b>	OT11E2
<b>Applications:</b>	IF, WB
<b>Recommended Dilution:</b>	WB 1:500~2000, IF 1:100
<b>Reactivity:</b>	Human, Dog, Monkey, Mouse
<b>Host:</b>	Mouse
<b>Isotype:</b>	IgG2b
<b>Clonality:</b>	Monoclonal
<b>Immunogen:</b>	Human recombinant protein fragment corresponding to amino acids 4-185 of human DHFRL1(NP_789785) produced in E.coli.
<b>Formulation:</b>	Lyophilized powder (original buffer 1X PBS, pH 7.3, 8% trehalose)
<b>Reconstitution Method:</b>	For reconstitution, we recommend adding 100uL distilled water to a final antibody concentration of about 1 mg/mL. To use this carrier-free antibody for conjugation experiment, we strongly recommend performing another round of desalting process. (OriGene recommends Zeba Spin Desalting Columns, 7KMWCO from Thermo Scientific)
<b>Purification:</b>	Purified from mouse ascites fluids or tissue culture supernatant by affinity chromatography (protein A/G)
<b>Conjugation:</b>	Unconjugated
<b>Storage:</b>	Store at -20°C as received.
<b>Stability:</b>	Stable for 12 months from date of receipt.
<b>Predicted Protein Size:</b>	21.4 kDa
<b>Gene Name:</b>	dihydrofolate reductase 2
<b>Database Link:</b>	<a href="#">NP_789785</a> <a href="#">Entrez Gene 106996159 Monkey</a> <a href="#">Entrez Gene 200895 Human</a> <a href="#">Q86XF0</a>
<b>Synonyms:</b>	DHFRP4
<b>Protein Families:</b>	Druggable Genome



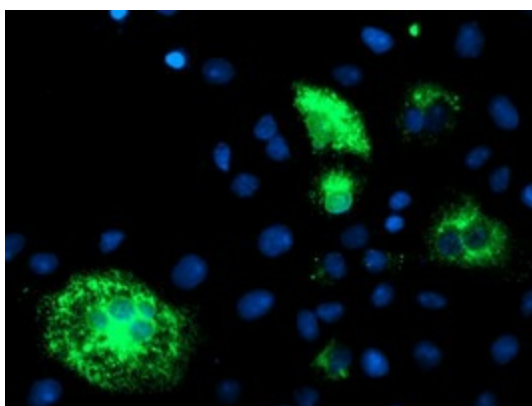
[View online »](#)

**Product images:**


HEK293T cells were transfected with the pCMV6-ENTRY control (Cat# [PS100001], Left lane) or pCMV6-ENTRY DHFRL1 (Cat# [RC208452], Right lane) cDNA for 48 hrs and lysed. Equivalent amounts of cell lysates (5 ug per lane) were separated by SDS-PAGE and immunoblotted with anti-DHFRL1 (Cat# [TA503259]). Positive lysates [LY406051] (100ug) and [LC406051] (20ug) can be purchased separately from OriGene.



Western blot analysis of extracts (35ug) from 9 different cell lines by using anti-DHFRL1 monoclonal antibody.



Anti-DHFRL1 mouse monoclonal antibody ([TA503259]) immunofluorescent staining of COS7 cells transiently transfected by pCMV6-ENTRY DHFRL1 ([RC208452]).