

## Product datasheet for **CF503246**

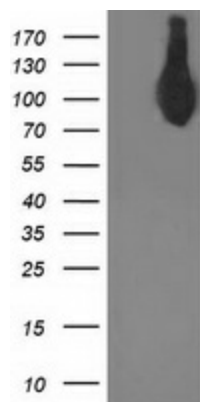
### ASCC2 Mouse Monoclonal Antibody [Clone ID: OTI2D3]

#### Product data:

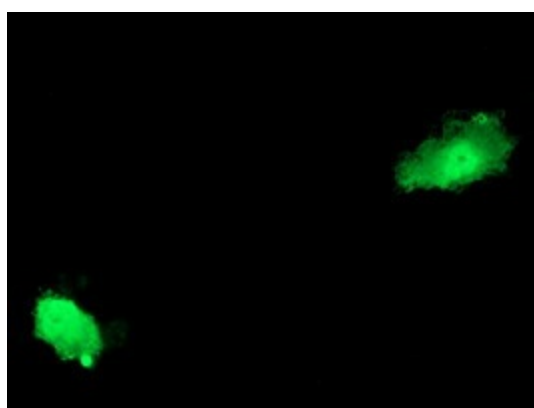
Product Type:	Primary Antibodies
Clone Name:	OTI2D3
Applications:	IF, WB
Recommended Dilution:	WB 1:2000, IF 1:100
Reactivity:	Human, Mouse, Rat
Host:	Mouse
Isotype:	IgG2b
Clonality:	Monoclonal
Immunogen:	Full length human recombinant protein of human ASCC2 (NP_115580) produced in HEK293T cell.
Formulation:	Lyophilized powder (original buffer 1X PBS, pH 7.3, 8% trehalose)
Reconstitution Method:	For reconstitution, we recommend adding 100uL distilled water to a final antibody concentration of about 1 mg/mL. To use this carrier-free antibody for conjugation experiment, we strongly recommend performing another round of desalting process. (OriGene recommends Zeba Spin Desalting Columns, 7KMWCO from Thermo Scientific)
Purification:	Purified from mouse ascites fluids or tissue culture supernatant by affinity chromatography (protein A/G)
Conjugation:	Unconjugated
Storage:	Store at -20°C as received.
Stability:	Stable for 12 months from date of receipt.
Predicted Protein Size:	86.2 kDa
Gene Name:	activating signal cointegrator 1 complex subunit 2
Database Link:	<a href="#">NP_115580</a> <a href="#">Entrez Gene 84164 Human</a> <a href="#">Q9H118</a>
Synonyms:	ASC1p100; p100
Protein Families:	Druggable Genome, Transcription Factors



[View online »](#)

**Product images:**

HEK293T cells were transfected with the pCMV6-ENTRY control (Left lane) or pCMV6-ENTRY ASCC2 ([RC203391], Right lane) cDNA for 48 hrs and lysed. Equivalent amounts of cell lysates (5 ug per lane) were separated by SDS-PAGE and immunoblotted with anti-ASCC2. Positive lysates [LY403150] (100ug) and [LC403150] (20ug) can be purchased separately from OriGene.



Anti-ASCC2 mouse monoclonal antibody ([TA503246]) immunofluorescent staining of COS7 cells transiently transfected by pCMV6-ENTRY ASCC2 ([RC203391]).