

Product datasheet for **CF503245**

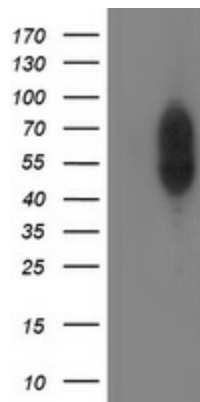
PHF21B Mouse Monoclonal Antibody [Clone ID: OTI5D2]

Product data:

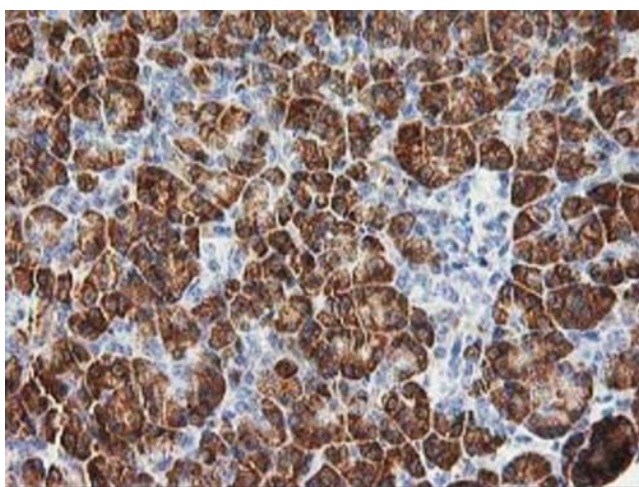
Product Type:	Primary Antibodies
Clone Name:	OTI5D2
Applications:	IF, IHC, WB
Recommended Dilution:	WB 1:2000, IHC 1:150, IF 1:100
Reactivity:	Human, Mouse, Rat
Host:	Mouse
Isotype:	IgG1
Clonality:	Monoclonal
Immunogen:	Full length human recombinant protein of human PHF21B(NP_612424) produced in HEK293 cell.
Formulation:	Lyophilized powder (original buffer 1X PBS, pH 7.3, 8% trehalose)
Reconstitution Method:	For reconstitution, we recommend adding 100uL distilled water to a final antibody concentration of about 1 mg/mL. To use this carrier-free antibody for conjugation experiment, we strongly recommend performing another round of desalting process. (OriGene recommends Zeba Spin Desalting Columns, 7KMWCO from Thermo Scientific)
Purification:	Purified from mouse ascites fluids or tissue culture supernatant by affinity chromatography (protein A/G)
Conjugation:	Unconjugated
Storage:	Store at -20°C as received.
Stability:	Stable for 12 months from date of receipt.
Predicted Protein Size:	57.3 kDa
Gene Name:	PHD finger protein 21B
Database Link:	NP_612424 Entrez Gene 112885 Human Q96EK2
Synonyms:	BHC80L; PHF4
Protein Families:	Druggable Genome, Transcription Factors



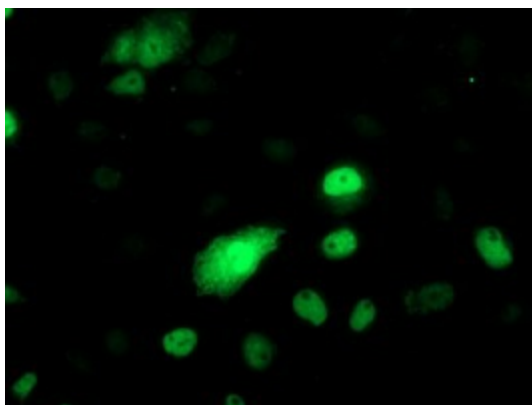
[View online »](#)

Product images:

HEK293T cells were transfected with the pCMV6-ENTRY control (Left lane) or pCMV6-ENTRY PHF21B ([RC204284], Right lane) cDNA for 48 hrs and lysed. Equivalent amounts of cell lysates (5 ug per lane) were separated by SDS-PAGE and immunoblotted with anti-PHF21B. Positive lysates [LY408673] (100ug) and [LC408673] (20ug) can be purchased separately from OriGene.



Immunohistochemical staining of paraffin-embedded Human pancreas tissue within the normal limits using anti-PHF21B mouse monoclonal antibody. (Heat-induced epitope retrieval by 10mM citric buffer, pH6.0, 100°C for 10min, [TA503245])



Anti-PHF21B mouse monoclonal antibody ([TA503245]) immunofluorescent staining of COS7 cells transiently transfected by pCMV6-ENTRY PHF21B ([RC204284]).