

## Product datasheet for **CF503240**

### **OBFC1 (STN1) Mouse Monoclonal Antibody [Clone ID: OTI2E4]**

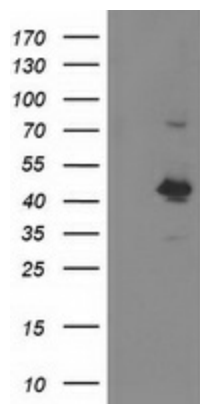
#### **Product data:**

<b>Product Type:</b>	Primary Antibodies
<b>Clone Name:</b>	OTI2E4
<b>Applications:</b>	FC, IF, WB
<b>Recommended Dilution:</b>	WB 1:2000, IF 1:100, FLOW 1:100
<b>Reactivity:</b>	Human
<b>Host:</b>	Mouse
<b>Isotype:</b>	IgG1
<b>Clonality:</b>	Monoclonal
<b>Immunogen:</b>	Full length human recombinant protein of human OBFC1 (NP_079204) produced in HEK293T cell.
<b>Formulation:</b>	Lyophilized powder (original buffer 1X PBS, pH 7.3, 8% trehalose)
<b>Reconstitution Method:</b>	For reconstitution, we recommend adding 100uL distilled water to a final antibody concentration of about 1 mg/mL. To use this carrier-free antibody for conjugation experiment, we strongly recommend performing another round of desalting process. (OriGene recommends Zeba Spin Desalting Columns, 7KMWCO from Thermo Scientific)
<b>Purification:</b>	Purified from mouse ascites fluids or tissue culture supernatant by affinity chromatography (protein A/G)
<b>Storage:</b>	Store at -20°C as received.
<b>Stability:</b>	Stable for 12 months from date of receipt.
<b>Predicted Protein Size:</b>	41.9 kDa
<b>Gene Name:</b>	Homo sapiens STN1 subunit of CST complex (STN1), mRNA.
<b>Database Link:</b>	<a href="#">NP_079204 Entrez Gene 79991 Human</a>
<b>Background:</b>	OBFC1 and C17ORF68 (MIM 613129) are subunits of an alpha accessory factor (AAF) that stimulates the activity of DNA polymerase-alpha-primase (see MIM 176636), the enzyme that initiates DNA replication (Casteel et al., 2009 [PubMed 19119139]). OBFC1 also appears to function in a telomere-associated complex with C17ORF68 and TEN1 (C17ORF106; MIM 613130) (Miyake et al., 2009 [PubMed 19854130]). [supplied by OMIM]
<b>Synonyms:</b>	AAF-44; AAF44; bA541N10.2; RPA-32; STN1

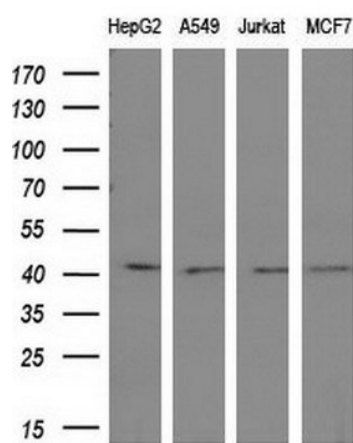


[View online »](#)

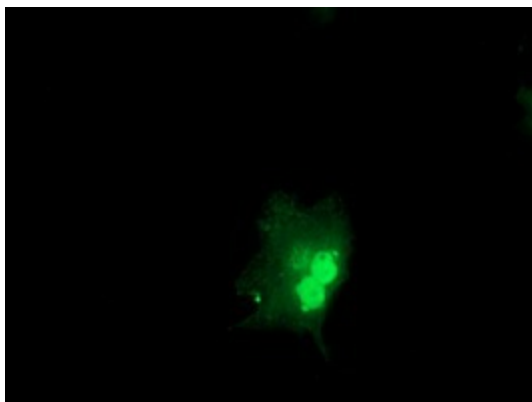
## Product images:



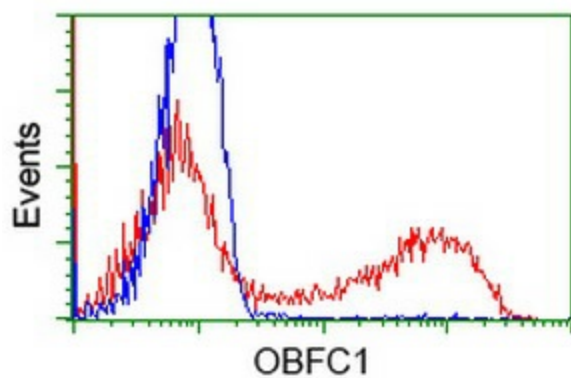
HEK293T cells were transfected with the pCMV6-ENTRY control (Left lane) or pCMV6-ENTRY OBFC1 ([RC200778], Right lane) cDNA for 48 hrs and lysed. Equivalent amounts of cell lysates (5 ug per lane) were separated by SDS-PAGE and immunoblotted with anti-OBFC1. Positive lysates [LY410967] (100ug) and [LC410967] (20ug) can be purchased separately from OriGene.



Western blot analysis of extracts (10ug) from 4 different cell lines by using anti-OBFC1 monoclonal antibody at 1:200 dilution.



Anti-OBFC1 mouse monoclonal antibody ([TA503240]) immunofluorescent staining of COS7 cells transiently transfected by pCMV6-ENTRY OBFC1 ([RC200778]).



HEK293T cells transfected with either [RC200778] overexpress plasmid (Red) or empty vector control plasmid (Blue) were immunostained by anti-OBFC1 antibody ([TA503240]), and then analyzed by flow cytometry.