

## Product datasheet for **CF503216**

### **TOMM34 Mouse Monoclonal Antibody [Clone ID: OTI1G7]**

#### **Product data:**

<b>Product Type:</b>	Primary Antibodies
<b>Clone Name:</b>	OTI1G7
<b>Applications:</b>	FC, IF, IHC, WB
<b>Recommended Dilution:</b>	WB 1:500~2000, IHC 1:150, IF 1:100, FLOW 1:100
<b>Reactivity:</b>	Human, Mouse, Rat
<b>Host:</b>	Mouse
<b>Isotype:</b>	IgG1
<b>Clonality:</b>	Monoclonal
<b>Immunogen:</b>	Full length human recombinant protein of human TOMM34(NP_006800) produced in HEK293T cell.
<b>Formulation:</b>	Lyophilized powder (original buffer 1X PBS, pH 7.3, 8% trehalose)
<b>Reconstitution Method:</b>	For reconstitution, we recommend adding 100uL distilled water to a final antibody concentration of about 1 mg/mL. To use this carrier-free antibody for conjugation experiment, we strongly recommend performing another round of desalting process. (OriGene recommends Zeba Spin Desalting Columns, 7KMWCO from Thermo Scientific)
<b>Purification:</b>	Purified from mouse ascites fluids or tissue culture supernatant by affinity chromatography (protein A/G)
<b>Conjugation:</b>	Unconjugated
<b>Storage:</b>	Store at -20°C as received.
<b>Stability:</b>	Stable for 12 months from date of receipt.
<b>Predicted Protein Size:</b>	34.4 kDa
<b>Gene Name:</b>	translocase of outer mitochondrial membrane 34
<b>Database Link:</b>	<a href="#">NP_006800</a> <a href="#">Entrez Gene 10953 Human Q15785</a>



[View online »](#)

**Background:**

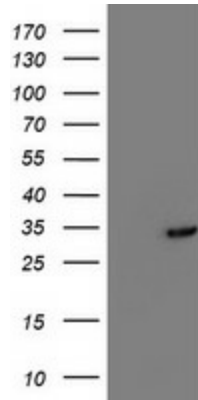
The protein encoded by this gene is involved in the import of precursor proteins into mitochondria. The encoded protein has a chaperone-like activity, binding the mature portion of unfolded proteins and aiding their import into mitochondria. This protein, which is found in the cytoplasm and sometimes associated with the outer mitochondrial membrane, has a weak ATPase activity and contains 6 TPR repeats. [provided by RefSeq]

**Synonyms:**

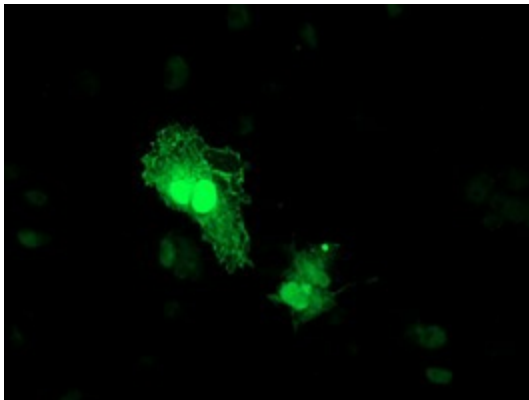
HTOM34P; TOM34; URCC3

**Protein Families:**

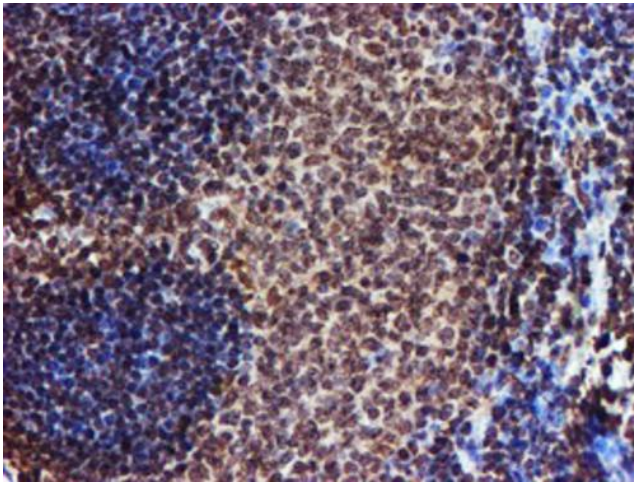
Druggable Genome

**Product images:**

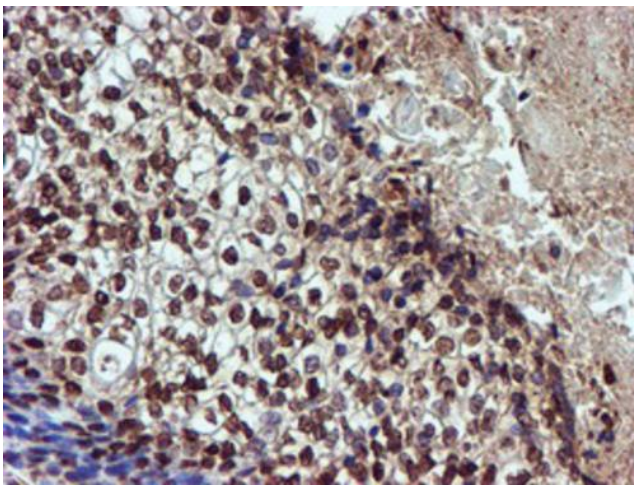
HEK293T cells were transfected with the pCMV6-ENTRY control (Left lane) or pCMV6-ENTRY TOMM34 ([RC201083], Right lane) cDNA for 48 hrs and lysed. Equivalent amounts of cell lysates (5 ug per lane) were separated by SDS-PAGE and immunoblotted with anti-TOMM34. Positive lysates [LY416405] (100ug) and [LC416405] (20ug) can be purchased separately from OriGene.



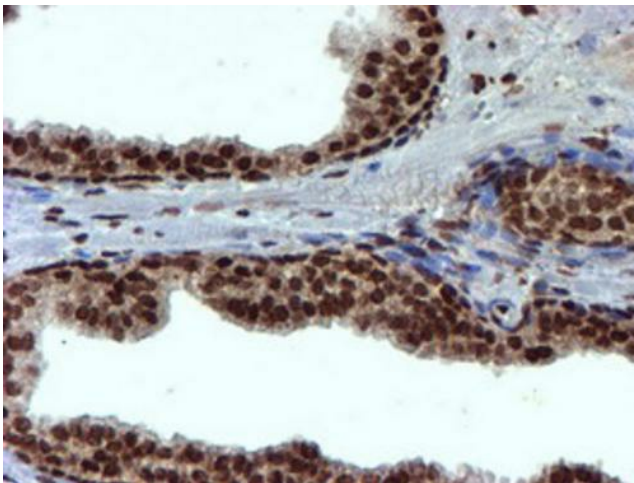
Anti-TOMM34 mouse monoclonal antibody ([TA503216]) immunofluorescent staining of COS7 cells transiently transfected by pCMV6-ENTRY TOMM34 ([RC201083]).



Immunohistochemical staining of paraffin-embedded Human tonsil within the normal limits using anti-TOMM34 mouse monoclonal antibody. Heat-induced epitope retrieval by EDTA solution buffer pH 8.0 at 120°C for 3 min.

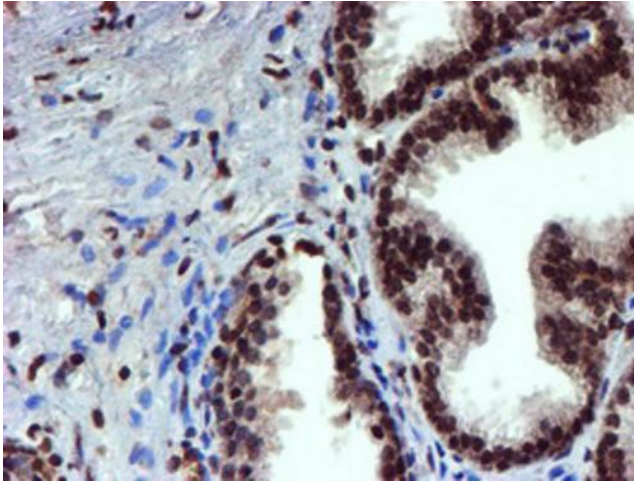


Immunohistochemical staining of paraffin-embedded Carcinoma of Human bladder tissue using anti-TOMM34 mouse monoclonal antibody. Heat-induced epitope retrieval by EDTA solution buffer pH 8.0 at 120°C for 3 min.

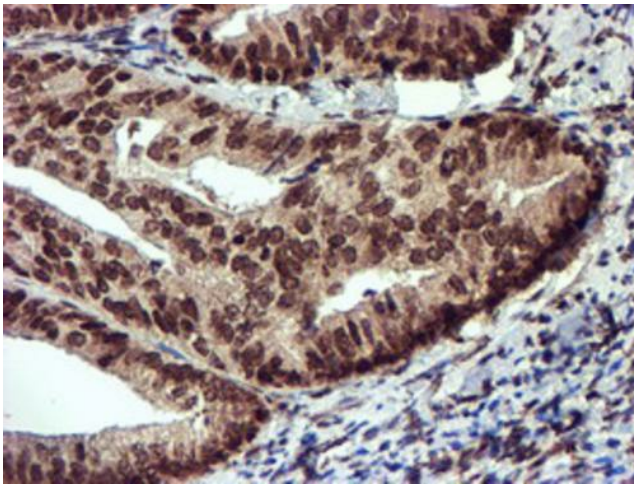


Immunohistochemical staining of paraffin-embedded Carcinoma of Human prostate tissue using anti-TOMM34 mouse monoclonal antibody. Heat-induced epitope retrieval by EDTA solution buffer pH 8.0 at 120°C for 3 min.

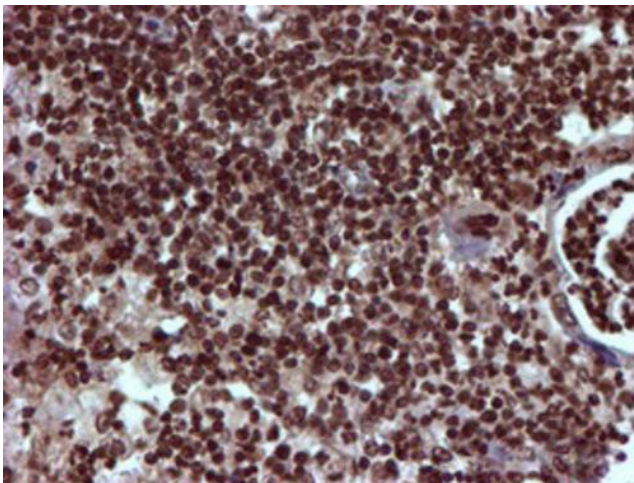




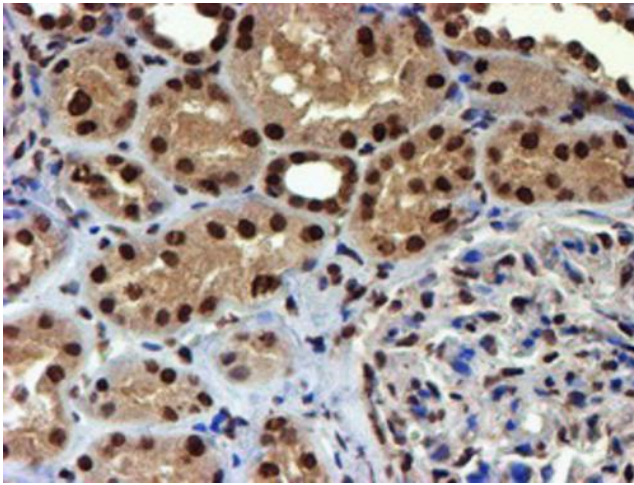
Immunohistochemical staining of paraffin-embedded Human prostate tissue within the normal limits using anti-TOMM34 mouse monoclonal antibody. Heat-induced epitope retrieval by EDTA solution buffer pH 8.0 at 120°C for 3 min.



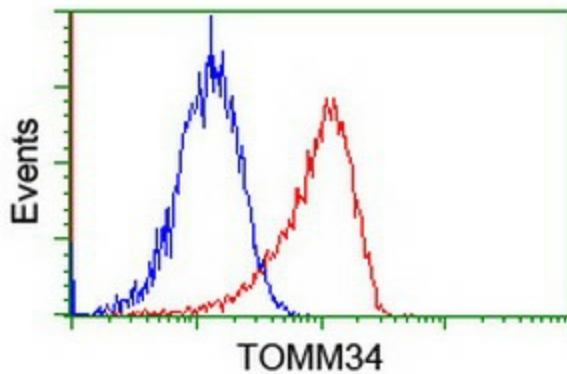
Immunohistochemical staining of paraffin-embedded Adenocarcinoma of Human endometrium tissue using anti-TOMM34 mouse monoclonal antibody. Heat-induced epitope retrieval by EDTA solution buffer pH 8.0 at 120°C for 3 min.



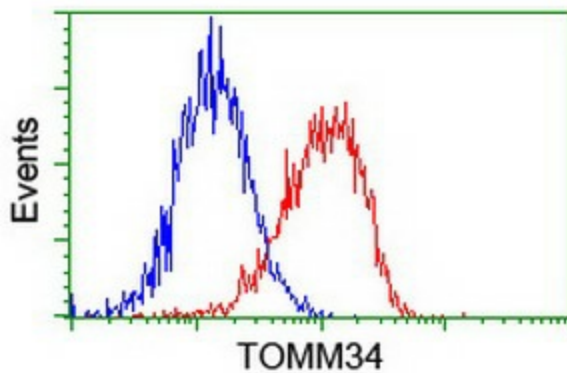
Immunohistochemical staining of paraffin-embedded Carcinoma of Human pancreas tissue using anti-TOMM34 mouse monoclonal antibody. Heat-induced epitope retrieval by EDTA solution buffer pH 8.0 at 120°C for 3 min.



Immunohistochemical staining of paraffin-embedded Human Kidney tissue within the normal limits using anti-TOMM34 mouse monoclonal antibody. Heat-induced epitope retrieval by EDTA solution buffer pH 8.0 at 120°C for 3 min.



Flow cytometric Analysis of Jurkat cells, using anti-TOMM34 antibody ([TA503216]), (Red), compared to a nonspecific negative control antibody, (Blue).



Flow cytometric Analysis of HeLa cells, using anti-TOMM34 antibody ([TA503216]), (Red), compared to a nonspecific negative control antibody, (Blue).