

## Product datasheet for **CF503196**

### Aldehyde dehydrogenase 10 (ALDH3A2) Mouse Monoclonal Antibody [Clone ID: OTI 1B11]

#### Product data:

Product Type:	Primary Antibodies
Clone Name:	OTI 1B11
Applications:	WB
Recommended Dilution:	WB 1:500
Reactivity:	Human, Rat
Host:	Mouse
Isotype:	IgG2b
Clonality:	Monoclonal
Immunogen:	Full length human recombinant protein of human ALDH3A2 (NP_001206976) produced in HEK293T cell.
Formulation:	Lyophilized powder (original buffer 1X PBS, pH 7.3, 8% trehalose)
Reconstitution Method:	For reconstitution, we recommend adding 100uL distilled water to a final antibody concentration of about 1 mg/mL. To use this carrier-free antibody for conjugation experiment, we strongly recommend performing another round of desalting process. (OriGene recommends Zeba Spin Desalting Columns, 7KMWCO from Thermo Scientific)
Purification:	Purified from mouse ascites fluids or tissue culture supernatant by affinity chromatography (protein A/G)
Conjugation:	Unconjugated
Storage:	Store at -20°C as received.
Stability:	Stable for 12 months from date of receipt.
Predicted Protein Size:	57.5 kDa
Gene Name:	aldehyde dehydrogenase 3 family member A2
Database Link:	<a href="#">NP_001026976</a> <a href="#">Entrez Gene 65183 Rat</a> <a href="#">Entrez Gene 224 Human</a> <a href="#">P51648</a>



[View online »](#)

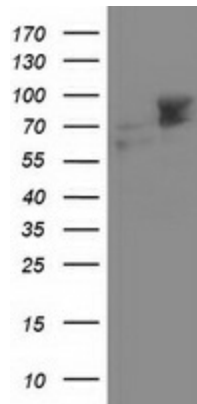
**Background:** Aldehyde dehydrogenase isozymes are thought to play a major role in the detoxification of aldehydes generated by alcohol metabolism and lipid peroxidation. This gene product catalyzes the oxidation of long-chain aliphatic aldehydes to fatty acid. Mutations in the gene cause Sjogren-Larsson syndrome. Alternatively spliced transcript variants encoding different isoforms have been found for this gene. [provided by RefSeq, Jul 2008]

**Synonyms:** ALDH10; FALDH; SLS

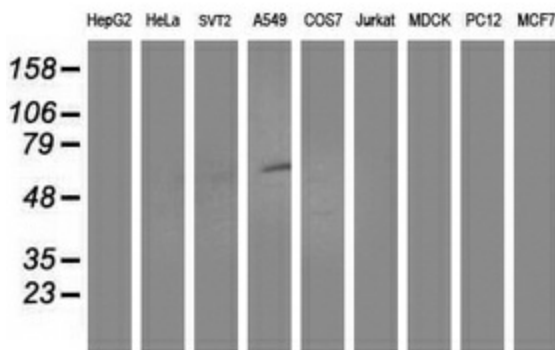
**Protein Families:** Druggable Genome, Transmembrane

**Protein Pathways:** Arginine and proline metabolism, Ascorbate and aldarate metabolism, beta-Alanine metabolism, Butanoate metabolism, Fatty acid metabolism, Glycerolipid metabolism, Glycolysis / Gluconeogenesis, Histidine metabolism, Limonene and pinene degradation, Lysine degradation, Metabolic pathways, Propanoate metabolism, Pyruvate metabolism, Tryptophan metabolism, Valine, leucine and isoleucine degradation

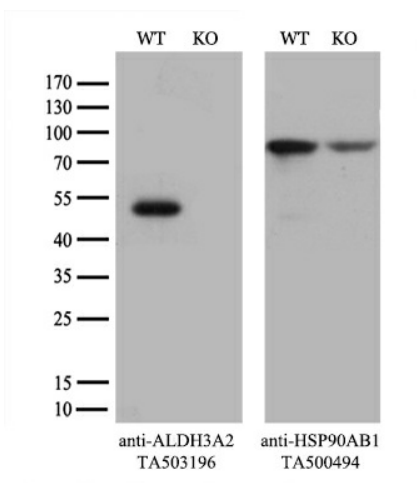
**Product images:**



HEK293T cells were transfected with the pCMV6-ENTRY control (Left lane) or pCMV6-ENTRY ALDH3A2 ([RC200648], Right lane) cDNA for 48 hrs and lysed. Equivalent amounts of cell lysates (5 ug per lane) were separated by SDS-PAGE and immunoblotted with anti-ALDH3A2. Positive lysates [LY422196] (100ug) and [LC422196] (20ug) can be purchased separately from OriGene.



Western blot analysis of extracts (35ug) from 9 different cell lines by using anti-ALDH3A2 monoclonal antibody (HepG2: human; HeLa: human; SVT2: mouse; A549: human; COS7: monkey; Jurkat: human; MDCK: canine; PC12: rat; MCF7: human).



Equivalent amounts of cell lysates (10 ug per lane) of wild-type HeLa cells (WT, Cat# LC810HELA) and ALDH3A2-Knockout HeLa cells (KO, Cat# [LC832790]) were separated by SDS-PAGE and immunoblotted with anti-ALDH3A2 monoclonal antibody [TA503196] (1:500). Then the blotted membrane was stripped and reprobed with anti-HSP90 antibody as a loading control.