

Product datasheet for **CF503193**

GPR48 (LGR4) Mouse Monoclonal Antibody [Clone ID: OTI2D1]

Product data:

Product Type:	Primary Antibodies
Clone Name:	OTI2D1
Applications:	FC, WB
Recommended Dilution:	WB 1:500, FLOW 1:100
Reactivity:	Human, Mouse, Rat
Host:	Mouse
Isotype:	IgG1
Clonality:	Monoclonal
Immunogen:	Human recombinant protein fragment corresponding to amino acids 230-540 of human LGR4 (NP_060960) produced in HEK293T Cell.
Formulation:	Lyophilized powder (original buffer 1X PBS, pH 7.3, 8% trehalose)
Reconstitution Method:	For reconstitution, we recommend adding 100uL distilled water to a final antibody concentration of about 1 mg/mL. To use this carrier-free antibody for conjugation experiment, we strongly recommend performing another round of desalting process. (OriGene recommends Zeba Spin Desalting Columns, 7KMWCO from Thermo Scientific)
Purification:	Purified from mouse ascites fluids or tissue culture supernatant by affinity chromatography (protein A/G)
Conjugation:	Unconjugated
Storage:	Store at -20°C as received.
Stability:	Stable for 12 months from date of receipt.
Gene Name:	leucine rich repeat containing G protein-coupled receptor 4
Database Link:	NP_060960 Entrez Gene 107515 Mouse Entrez Gene 286994 Rat Entrez Gene 55366 Human Q9BXB1
Background:	G protein-coupled receptors (GPCRs) play key roles in a variety of physiologic functions. Members of the leucine-rich GPCR (LGR) family, such as GPR48, have multiple N-terminal leucine-rich repeats (LRRs) and a 7-transmembrane domain (Weng et al., 2008 [PubMed 18424556]). [supplied by OMIM]

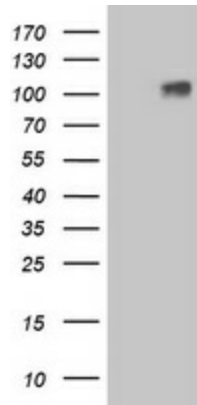


[View online »](#)

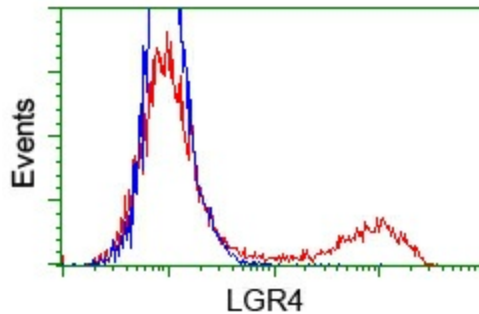
Synonyms: BNMD17; GPR48

Protein Families: Druggable Genome, GPCR, Transmembrane

Product images:



HEK293T cells were transfected with the pCMV6-ENTRY control (Left lane) or pCMV6-ENTRY LGR4 ([RC221345], Right lane) cDNA for 48 hrs and lysed. Equivalent amounts of cell lysates (5 ug per lane) were separated by SDS-PAGE and immunoblotted with anti-LGR4. Positive lysates [LY413017] (100ug) and [LC413017] (20ug) can be purchased separately from OriGene.



HEK293T cells transfected with either [RC221345] overexpress plasmid (Red) or empty vector control plasmid (Blue) were immunostained by anti-LGR4 antibody ([TA503193]), and then analyzed by flow cytometry.