

## Product datasheet for **CF503158**

### **DOK2 Mouse Monoclonal Antibody [Clone ID: OT1A4]**

#### **Product data:**

<b>Product Type:</b>	Primary Antibodies
<b>Clone Name:</b>	OT1A4
<b>Applications:</b>	FC, IF, WB
<b>Recommended Dilution:</b>	WB 1:2000, IF 1:100, FLOW 1:100
<b>Reactivity:</b>	Human
<b>Host:</b>	Mouse
<b>Isotype:</b>	IgG1
<b>Clonality:</b>	Monoclonal
<b>Immunogen:</b>	Full length human recombinant protein of human DOK2 (NP_003965) produced in HEK293T cell.
<b>Formulation:</b>	Lyophilized powder (original buffer 1X PBS, pH 7.3, 8% trehalose)
<b>Reconstitution Method:</b>	For reconstitution, we recommend adding 100uL distilled water to a final antibody concentration of about 1 mg/mL. To use this carrier-free antibody for conjugation experiment, we strongly recommend performing another round of desalting process. (OriGene recommends Zeba Spin Desalting Columns, 7KMWCO from Thermo Scientific)
<b>Purification:</b>	Purified from mouse ascites fluids or tissue culture supernatant by affinity chromatography (protein A/G)
<b>Conjugation:</b>	Unconjugated
<b>Storage:</b>	Store at -20°C as received.
<b>Stability:</b>	Stable for 12 months from date of receipt.
<b>Predicted Protein Size:</b>	45.2 kDa
<b>Gene Name:</b>	docking protein 2
<b>Database Link:</b>	<a href="#">NP_003965</a> <a href="#">Entrez Gene 9046 Human</a> <a href="#">O60496</a>



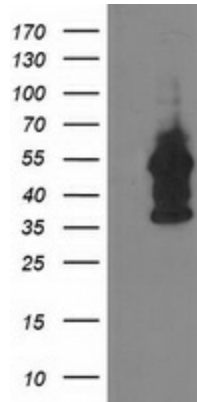
[View online »](#)

**Background:** The protein encoded by this gene is constitutively tyrosine phosphorylated in hematopoietic progenitors isolated from chronic myelogenous leukemia (CML) patients in the chronic phase. It may be a critical substrate for p210(bcr/abl), a chimeric protein whose presence is associated with CML. This encoded protein binds p120 (RasGAP) from CML cells. [provided by RefSeq]

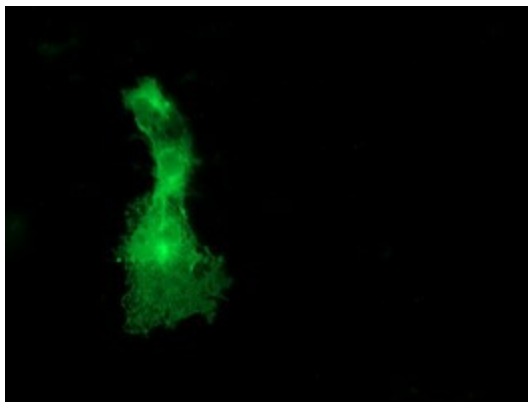
**Synonyms:** p56DOK; p56dok-2

**Protein Families:** Druggable Genome

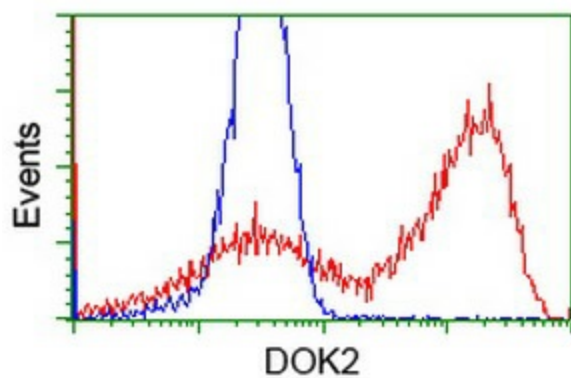
**Product images:**



HEK293T cells were transfected with the pCMV6-ENTRY control (Cat# [PS100001], Left lane) or pCMV6-ENTRY DOK2 (Cat# [RC207621], Right lane) cDNA for 48 hrs and lysed. Equivalent amounts of cell lysates (5 ug per lane) were separated by SDS-PAGE and immunoblotted with anti-DOK2(Cat# [TA503158]). Positive lysates [LY418321] (100ug) and [LC418321] (20ug) can be purchased separately from OriGene.



Anti-DOK2 mouse monoclonal antibody ([TA503158]) immunofluorescent staining of COS7 cells transiently transfected by pCMV6-ENTRY DOK2 ([RC207621]).



HEK293T cells transfected with either [RC207621] overexpress plasmid (Red) or empty vector control plasmid (Blue) were immunostained by anti-DOK2 antibody ([TA503158]), and then analyzed by flow cytometry.