

Product datasheet for **CF503140**

OSBP1 (OSBP) Mouse Monoclonal Antibody [Clone ID: OTI1F2]

Product data:

Product Type:	Primary Antibodies
Clone Name:	OTI1F2
Applications:	FC, IF, IHC, WB
Recommended Dilution:	WB 1:2000, IHC 1:150, IF 1:100, FLOW 1:100
Reactivity:	Human, Mouse, Rat
Host:	Mouse
Isotype:	IgG1
Clonality:	Monoclonal
Immunogen:	Full length human recombinant protein of human OSBP (NP_002547) produced in HEK293T cell.
Formulation:	Lyophilized powder (original buffer 1X PBS, pH 7.3, 8% trehalose)
Reconstitution Method:	For reconstitution, we recommend adding 100uL distilled water to a final antibody concentration of about 1 mg/mL. To use this carrier-free antibody for conjugation experiment, we strongly recommend performing another round of desalting process. (OriGene recommends Zeba Spin Desalting Columns, 7KMWCO from Thermo Scientific)
Purification:	Purified from mouse ascites fluids or tissue culture supernatant by affinity chromatography (protein A/G)
Conjugation:	Unconjugated
Storage:	Store at -20°C as received.
Stability:	Stable for 12 months from date of receipt.
Predicted Protein Size:	89.2 kDa
Gene Name:	Homo sapiens oxysterol binding protein (OSBP), mRNA.
Database Link:	NP_002547 Entrez Gene 76303 Mouse Entrez Gene 365410 Rat Entrez Gene 5007 Human P22059
Background:	Oxysterol binding protein is an intracellular protein that is believed to transport sterols from lysosomes to the nucleus where the sterol down-regulates the genes for the LDL receptor, HMG-CoA reductase, and HMG synthetase [provided by RefSeq].

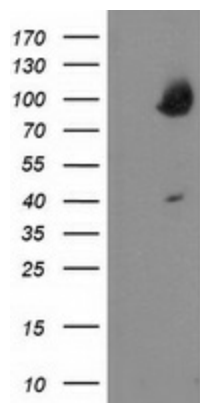


[View online »](#)

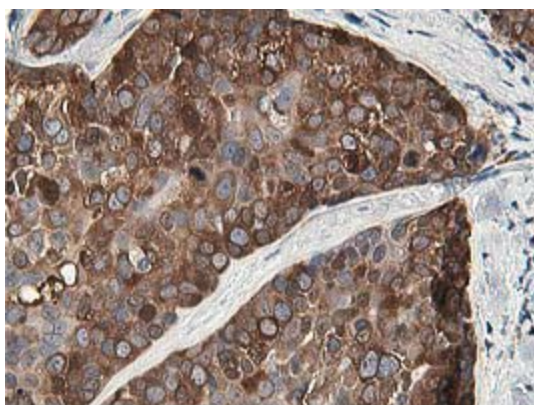
Synonyms: OSBP1

Protein Families: Druggable Genome

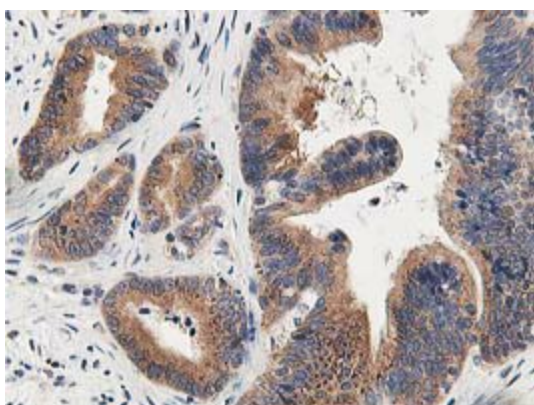
Product images:



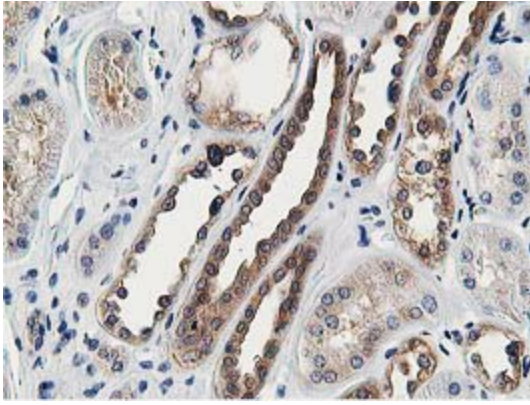
HEK293T cells were transfected with the pCMV6-ENTRY control (Cat# [PS100001], Left lane) or pCMV6-ENTRY OSBP (Cat# [RC204250], Right lane) cDNA for 48 hrs and lysed. Equivalent amounts of cell lysates (5 ug per lane) were separated by SDS-PAGE and immunoblotted with anti-OSBP (Cat# [TA503140]). Positive lysates [LY419260] (100ug) and [LC419260] (20ug) can be purchased separately from OriGene.



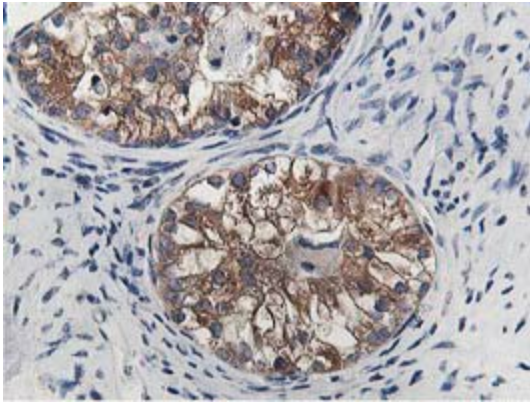
Immunohistochemical staining of paraffin-embedded Adenocarcinoma of Human breast tissue using anti-OSBP mouse monoclonal antibody. (Heat-induced epitope retrieval by 10mM citric buffer, pH6.0, 100°C for 10min, [TA503140])



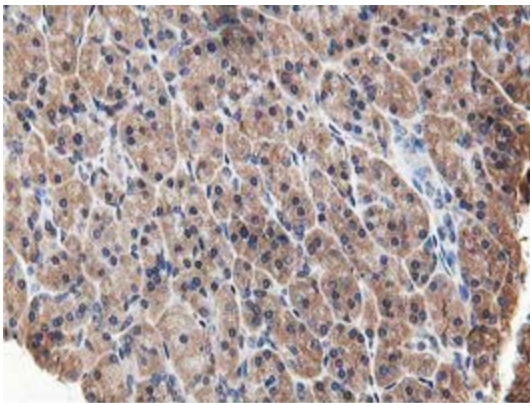
Immunohistochemical staining of paraffin-embedded Adenocarcinoma of Human colon tissue using anti-OSBP mouse monoclonal antibody. (Heat-induced epitope retrieval by 10mM citric buffer, pH6.0, 100°C for 10min, [TA503140])



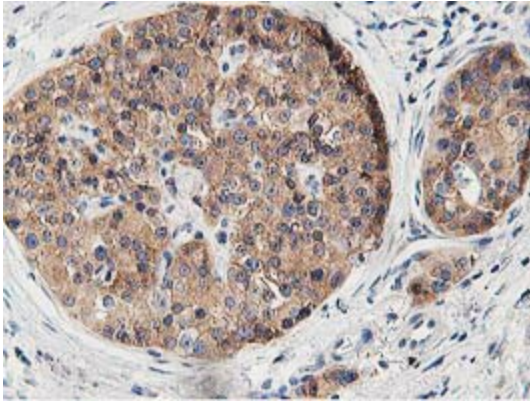
Immunohistochemical staining of paraffin-embedded Human Kidney tissue within the normal limits using anti-OSBP mouse monoclonal antibody. (Heat-induced epitope retrieval by 10mM citric buffer, pH6.0, 100°C for 10min, [TA503140])



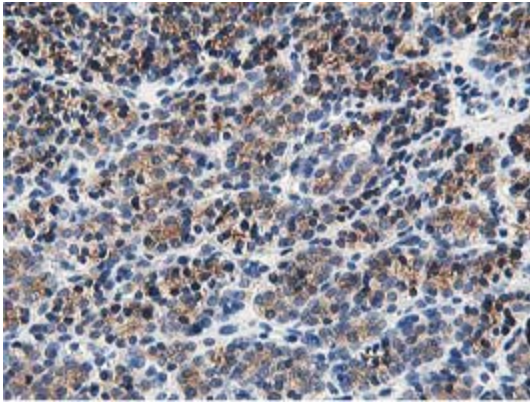
Immunohistochemical staining of paraffin-embedded Adenocarcinoma of Human ovary tissue using anti-OSBP mouse monoclonal antibody. (Heat-induced epitope retrieval by 10mM citric buffer, pH6.0, 100°C for 10min, [TA503140])



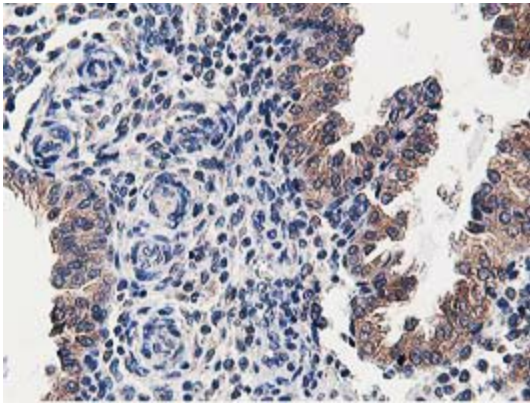
Immunohistochemical staining of paraffin-embedded Human pancreas tissue within the normal limits using anti-OSBP mouse monoclonal antibody. (Heat-induced epitope retrieval by 10mM citric buffer, pH6.0, 100°C for 10min, [TA503140])



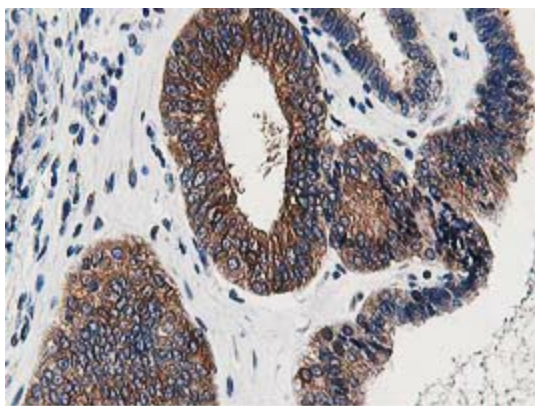
Immunohistochemical staining of paraffin-embedded Carcinoma of Human pancreas tissue using anti-OSBP mouse monoclonal antibody. (Heat-induced epitope retrieval by 10mM citric buffer, pH6.0, 100°C for 10min, [TA503140])



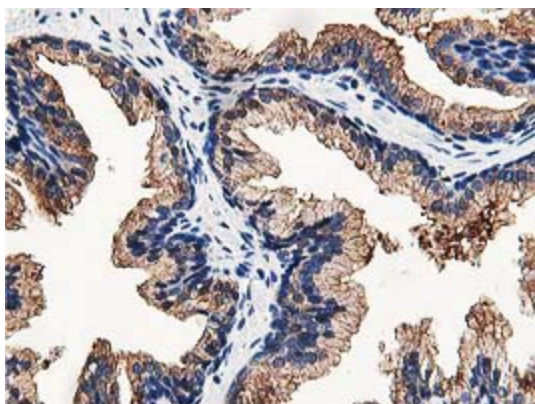
Immunohistochemical staining of paraffin-embedded Carcinoma of Human thyroid tissue using anti-OSBP mouse monoclonal antibody. (Heat-induced epitope retrieval by 10mM citric buffer, pH6.0, 100°C for 10min, [TA503140])



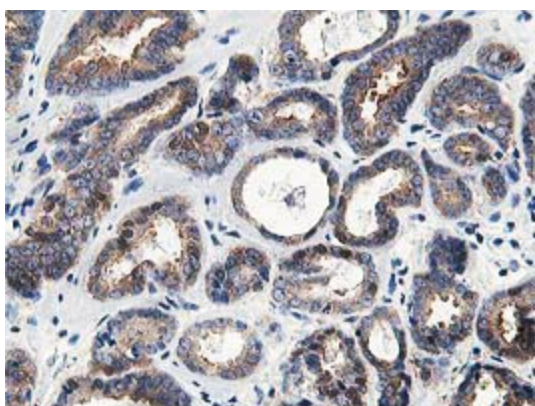
Immunohistochemical staining of paraffin-embedded Human endometrium tissue within the normal limits using anti-OSBP mouse monoclonal antibody. (Heat-induced epitope retrieval by 10mM citric buffer, pH6.0, 100°C for 10min, [TA503140])



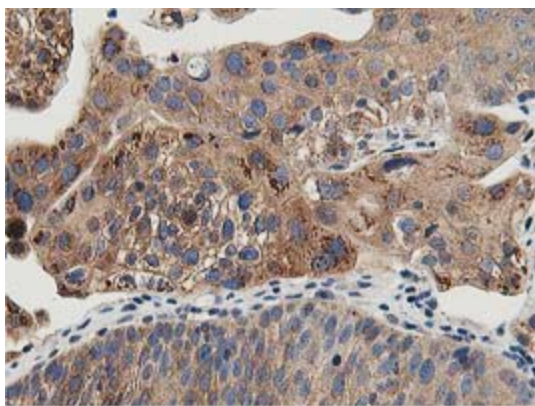
Immunohistochemical staining of paraffin-embedded Adenocarcinoma of Human endometrium tissue using anti-OSBP mouse monoclonal antibody. (Heat-induced epitope retrieval by 10mM citric buffer, pH6.0, 100°C for 10min, [TA503140])



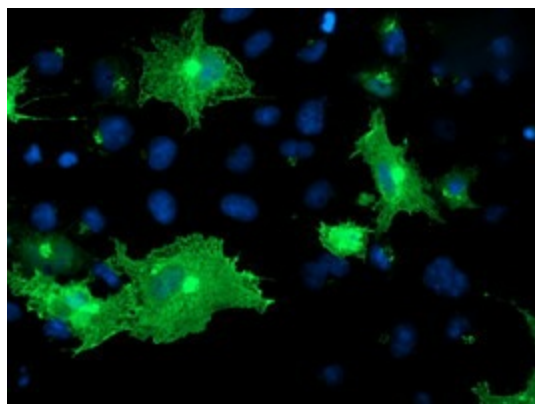
Immunohistochemical staining of paraffin-embedded Human prostate tissue within the normal limits using anti-OSBP mouse monoclonal antibody. (Heat-induced epitope retrieval by 10mM citric buffer, pH6.0, 100°C for 10min, [TA503140])



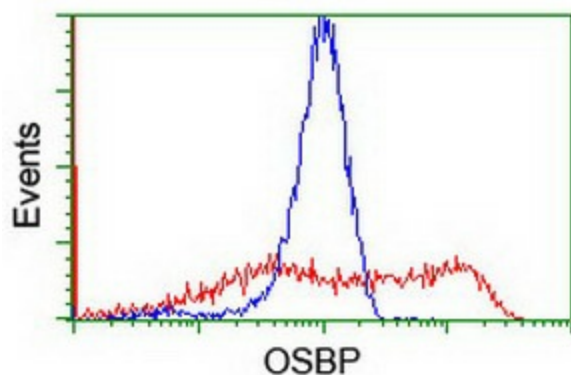
Immunohistochemical staining of paraffin-embedded Carcinoma of Human prostate tissue using anti-OSBP mouse monoclonal antibody. (Heat-induced epitope retrieval by 10mM citric buffer, pH6.0, 100°C for 10min, [TA503140])



Immunohistochemical staining of paraffin-embedded Carcinoma of Human bladder tissue using anti-OSBP mouse monoclonal antibody. (Heat-induced epitope retrieval by 10mM citric buffer, pH6.0, 100°C for 10min, [TA503140])



Anti-OSBP mouse monoclonal antibody ([TA503140]) immunofluorescent staining of COS7 cells transiently transfected by pCMV6-ENTRY OSBP ([RC204250]).



HEK293T cells transfected with either [RC204250] overexpress plasmid (Red) or empty vector control plasmid (Blue) were immunostained by anti-OSBP antibody ([TA503140]), and then analyzed by flow cytometry.