

## Product datasheet for **CF503130**

### beta IV Tubulin (TUBB4A) Mouse Monoclonal Antibody [Clone ID: OTI6E3]

#### Product data:

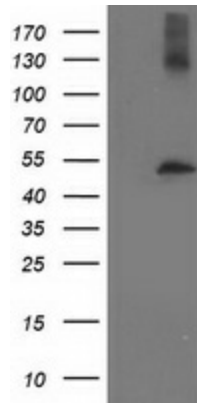
Product Type:	Primary Antibodies
Clone Name:	OTI6E3
Applications:	FC, WB
Recommended Dilution:	WB 1:2000, FLOW 1:100
Reactivity:	Human, Mouse, Rat
Host:	Mouse
Isotype:	IgG2b
Clonality:	Monoclonal
Immunogen:	Full length human recombinant protein of human TUBB4 (NP_006078) produced in HEK293T cell.
Formulation:	Lyophilized powder (original buffer 1X PBS, pH 7.3, 8% trehalose)
Reconstitution Method:	For reconstitution, we recommend adding 100uL distilled water to a final antibody concentration of about 1 mg/mL. To use this carrier-free antibody for conjugation experiment, we strongly recommend performing another round of desalting process. (OriGene recommends Zeba Spin Desalting Columns, 7KMWCO from Thermo Scientific)
Purification:	Purified from mouse ascites fluids or tissue culture supernatant by affinity chromatography (protein A/G)
Conjugation:	Unconjugated
Storage:	Store at -20°C as received.
Stability:	Stable for 12 months from date of receipt.
Predicted Protein Size:	49.4 kDa
Gene Name:	tubulin beta 4A class IVa
Database Link:	<a href="#">NP_006078</a> <a href="#">Entrez Gene 22153 Mouse</a> <a href="#">Entrez Gene 29213 Rat</a> <a href="#">Entrez Gene 10382 Human</a> <a href="#">P04350</a>
Synonyms:	beta-5; DYT4; TUBB4
Protein Families:	Druggable Genome



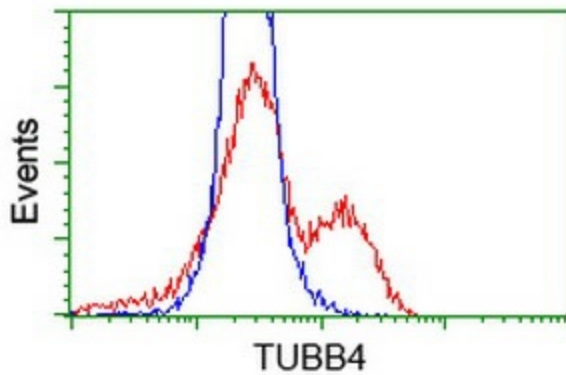
[View online »](#)

Protein Pathways: Gap junction, Pathogenic Escherichia coli infection

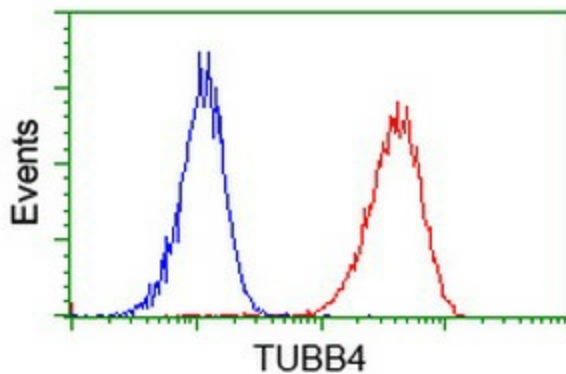
**Product images:**



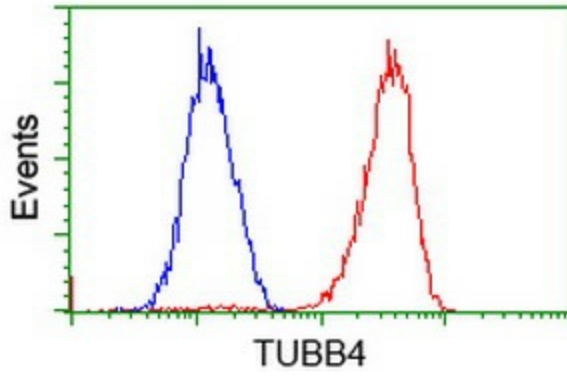
HEK293T cells were transfected with the pCMV6-ENTRY control (Left lane) or pCMV6-ENTRY TUBB4 ([RC203945], Right lane) cDNA for 48 hrs and lysed. Equivalent amounts of cell lysates (5 ug per lane) were separated by SDS-PAGE and immunoblotted with anti-TUBB4. Positive lysates [LY401833] (100ug) and [LC401833] (20ug) can be purchased separately from OriGene.



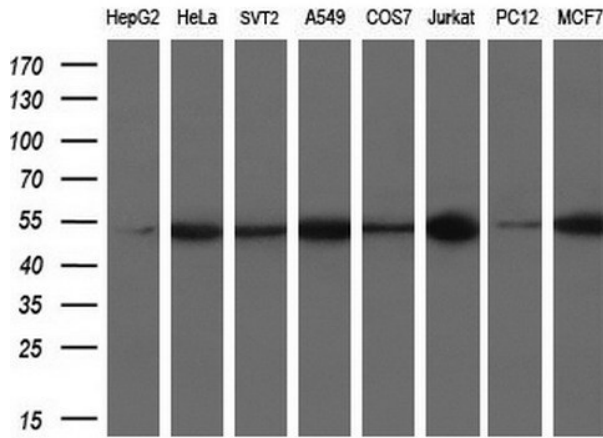
HEK293T cells transfected with either [RC203945] overexpress plasmid (Red) or empty vector control plasmid (Blue) were immunostained by anti-TUBB4 antibody ([TA503130]), and then analyzed by flow cytometry.



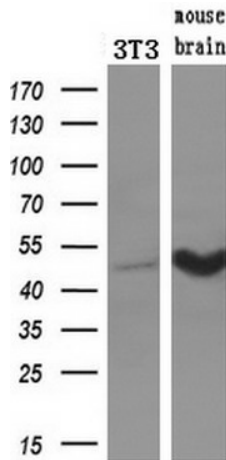
Flow cytometric Analysis of Jurkat cells, using anti-TUBB4 antibody ([TA503130]), (Red), compared to a nonspecific negative control antibody, (Blue).



Flow cytometric Analysis of HeLa cells, using anti-TUBB4 antibody ([TA503130]), (Red), compared to a nonspecific negative control antibody, (Blue).



Western blot analysis of extracts (10ug) from 8 different cell lines by using anti-TUBB4 monoclonal antibody at 1:200 dilution.



Western blot analysis of extracts (10ug) from a mouse cell line and a mouse tissues by using anti-TUBB4 monoclonal antibody (1:200).