

Product datasheet for **CF503124**

LCMT1 Mouse Monoclonal Antibody [Clone ID: OTI3F4]

Product data:

Product Type:	Primary Antibodies
Clone Name:	OTI3F4
Applications:	FC, IF, WB
Recommended Dilution:	WB 1:2000, IF 1:100, FLOW 1:100
Reactivity:	Human, Mouse, Rat
Host:	Mouse
Isotype:	IgG1
Clonality:	Monoclonal
Immunogen:	Full length human recombinant protein of human LCMT1(NP_057393) produced in HEK293T cell.
Formulation:	Lyophilized powder (original buffer 1X PBS, pH 7.3, 8% trehalose)
Reconstitution Method:	For reconstitution, we recommend adding 100uL distilled water to a final antibody concentration of about 1 mg/mL. To use this carrier-free antibody for conjugation experiment, we strongly recommend performing another round of desalting process. (OriGene recommends Zeba Spin Desalting Columns, 7KMWCO from Thermo Scientific)
Purification:	Purified from mouse ascites fluids or tissue culture supernatant by affinity chromatography (protein A/G)
Conjugation:	Unconjugated
Storage:	Store at -20°C as received.
Stability:	Stable for 12 months from date of receipt.
Predicted Protein Size:	38.2 kDa
Gene Name:	leucine carboxyl methyltransferase 1
Database Link:	NP_057393 Entrez Gene 30949 Mouse Entrez Gene 361643 Rat Entrez Gene 51451 Human Q9UIC8
Background:	LCMT1 catalyzes the methylation of the carboxyl group of the C-terminal leucine residue (leu309) of the catalytic subunit of protein phosphatase-2A (PPP2CA; MIM 176915) (De Baere et al., 1999 [PubMed 10600115]). [supplied by OMIM]

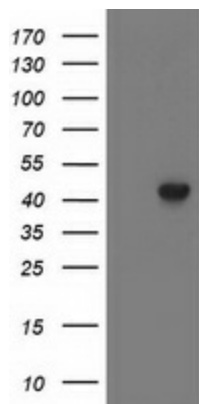


[View online >](#)

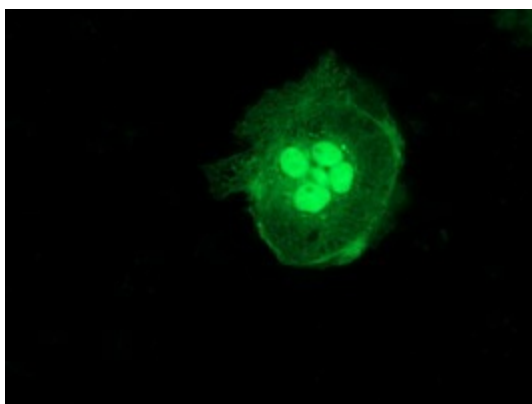
Synonyms: CGI-68; LCMT; PPMT1

Protein Pathways: Androgen and estrogen metabolism, Histidine metabolism, Selenoamino acid metabolism, Tyrosine metabolism

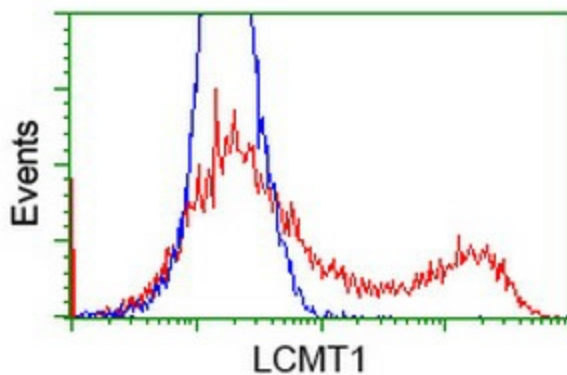
Product images:



HEK293T cells were transfected with the pCMV6-ENTRY control (Left lane) or pCMV6-ENTRY LCMT1 ([RC200018], Right lane) cDNA for 48 hrs and lysed. Equivalent amounts of cell lysates (5 ug per lane) were separated by SDS-PAGE and immunoblotted with anti-LCMT1. Positive lysates [LY414046] (100ug) and [LC414046] (20ug) can be purchased separately from OriGene.



Anti-LCMT1 mouse monoclonal antibody ([TA503124]) immunofluorescent staining of COS7 cells transiently transfected by pCMV6-ENTRY LCMT1 ([RC200018]).



HEK293T cells transfected with either [RC200018] overexpress plasmid (Red) or empty vector control plasmid (Blue) were immunostained by anti-LCMT1 antibody ([TA503124]), and then analyzed by flow cytometry.