

Product datasheet for **CF503120**

LSM1 Mouse Monoclonal Antibody [Clone ID: OTI5C6]

Product data:

| | |
|-------------------------|--|
| Product Type: | Primary Antibodies |
| Clone Name: | OTI5C6 |
| Applications: | FC, IF, IHC, WB |
| Recommended Dilution: | WB 1:500~2000, IHC 1:150, IF 1:100, FLOW 1:100 |
| Reactivity: | Human, Dog, Mouse, Rat |
| Host: | Mouse |
| Isotype: | IgG2b |
| Clonality: | Monoclonal |
| Immunogen: | Full length human recombinant protein of human LSM1 (NP_055277) produced in HEK293T cell. |
| Formulation: | Lyophilized powder (original buffer 1X PBS, pH 7.3, 8% trehalose) |
| Reconstitution Method: | For reconstitution, we recommend adding 100uL distilled water to a final antibody concentration of about 1 mg/mL. To use this carrier-free antibody for conjugation experiment, we strongly recommend performing another round of desalting process. (OriGene recommends Zeba Spin Desalting Columns, 7KMWCO from Thermo Scientific) |
| Purification: | Purified from mouse ascites fluids or tissue culture supernatant by affinity chromatography (protein A/G) |
| Conjugation: | Unconjugated |
| Storage: | Store at -20°C as received. |
| Stability: | Stable for 12 months from date of receipt. |
| Predicted Protein Size: | 15 kDa |
| Gene Name: | LSM1 homolog, mRNA degradation associated |
| Database Link: | NP_055277 Entrez Gene 67207 Mouse Entrez Gene 364624 Rat Entrez Gene 475587 Dog Entrez Gene 27257 Human O15116 |



[View online »](#)

Background:

Sm-like proteins were identified in a variety of organisms based on sequence homology with the Sm protein family (see SNRPD2; MIM 601061). Sm-like proteins contain the Sm sequence motif, which consists of 2 regions separated by a linker of variable length that folds as a loop. The Sm-like proteins are thought to form a stable heteromer present in tri-snRNP particles, which are important for pre-mRNA splicing. [supplied by OMIM]

Synonyms:

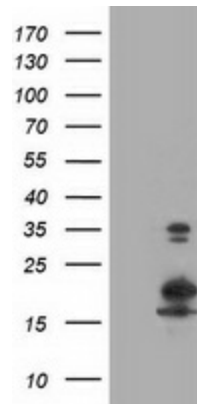
CASM; YJL124C

Protein Families:

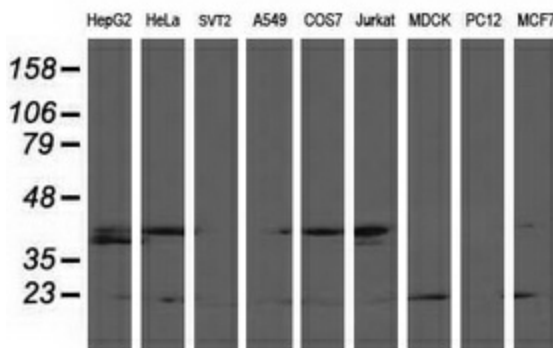
Stem cell - Pluripotency

Protein Pathways:

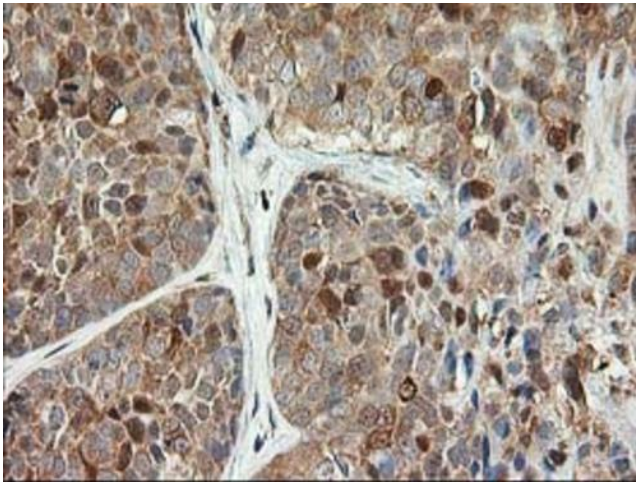
RNA degradation

Product images:


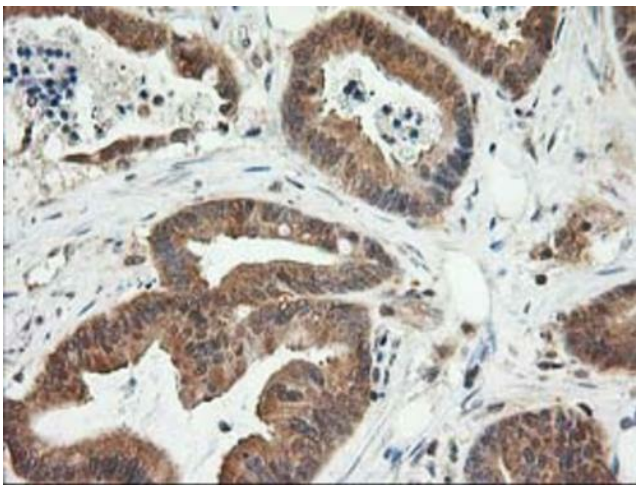
HEK293T cells were transfected with the pCMV6-ENTRY control (Cat# [PS100001], Left lane) or pCMV6-ENTRY LSM1 (Cat# [RC200288], Right lane) cDNA for 48 hrs and lysed. Equivalent amounts of cell lysates (5 ug per lane) were separated by SDS-PAGE and immunoblotted with anti-LSM1 (Cat# [TA503120]). Positive lysates [LY415265] (100ug) and [LC415265] (20ug) can be purchased separately from OriGene.



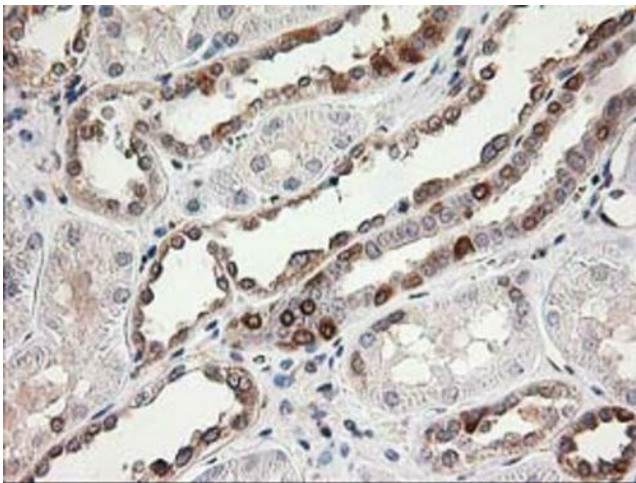
Western blot analysis of extracts (35ug) from 9 different cell lines by using anti-LSM1 monoclonal antibody.



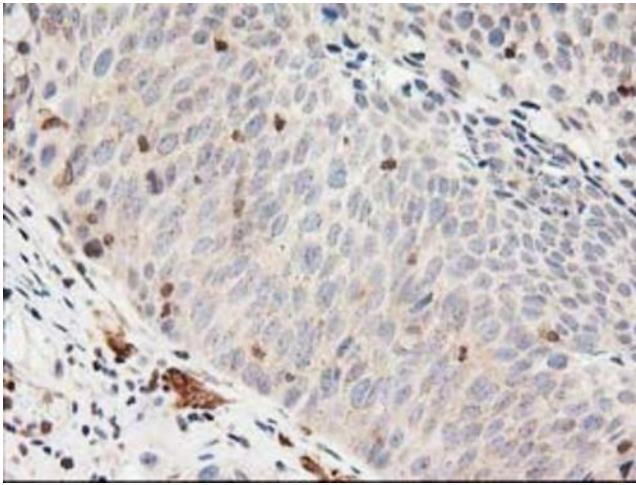
Immunohistochemical staining of paraffin-embedded Adenocarcinoma of Human breast tissue using anti-LSM1 mouse monoclonal antibody. Heat-induced epitope retrieval by EDTA solution buffer pH 8.0 at 120°C for 3 min.



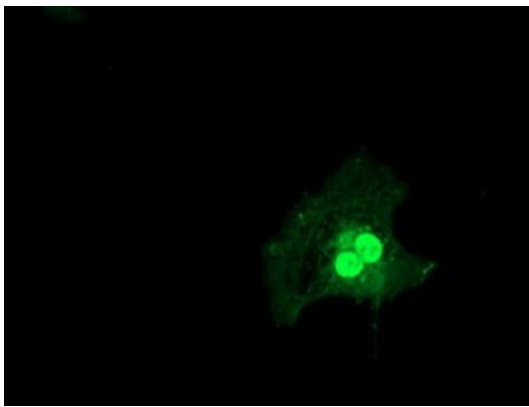
Immunohistochemical staining of paraffin-embedded Adenocarcinoma of Human colon tissue using anti-LSM1 mouse monoclonal antibody. Heat-induced epitope retrieval by EDTA solution buffer pH 8.0 at 120°C for 3 min.



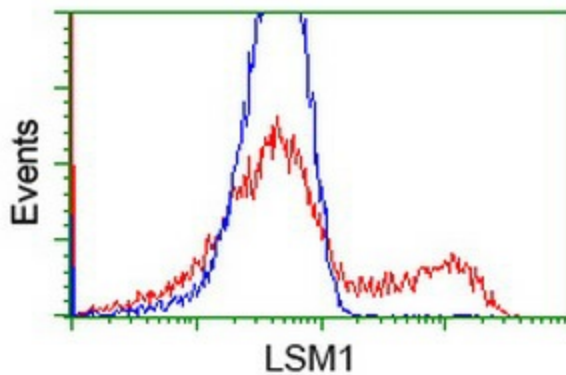
Immunohistochemical staining of paraffin-embedded Human Kidney tissue within the normal limits using anti-LSM1 mouse monoclonal antibody. Heat-induced epitope retrieval by EDTA solution buffer pH 8.0 at 120°C for 3 min.



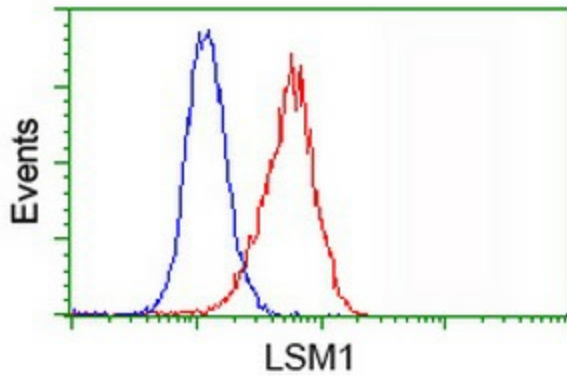
Immunohistochemical staining of paraffin-embedded Carcinoma of Human bladder tissue using anti-LSM1 mouse monoclonal antibody. Heat-induced epitope retrieval by EDTA solution buffer pH 8.0 at 120°C for 3 min.



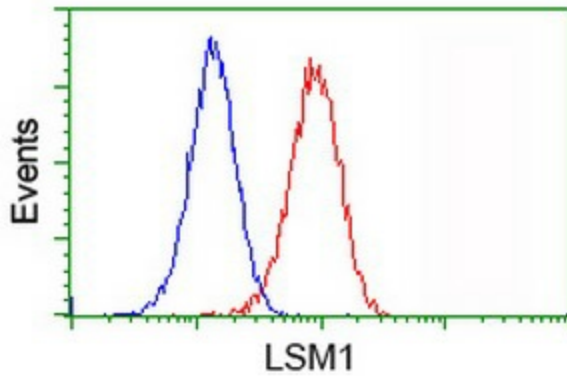
Anti-LSM1 mouse monoclonal antibody ([TA503120]) immunofluorescent staining of COS7 cells transiently transfected by pCMV6-ENTRY LSM1 ([RC200288]).



HEK293T cells transfected with either [RC200288] overexpress plasmid (Red) or empty vector control plasmid (Blue) were immunostained by anti-LSM1 antibody ([TA503120]), and then analyzed by flow cytometry.



Flow cytometric Analysis of HeLa cells, using anti-LSM1 antibody ([TA503120]), (Red), compared to a nonspecific negative control antibody, (Blue).



Flow cytometric Analysis of Jurkat cells, using anti-LSM1 antibody ([TA503120]), (Red), compared to a nonspecific negative control antibody, (Blue).