

## Product datasheet for **CF503110**

### beta IV Tubulin (TUBB4A) Mouse Monoclonal Antibody [Clone ID: OTI8E3]

#### Product data:

Product Type:	Primary Antibodies
Clone Name:	OTI8E3
Applications:	FC, IF, IHC, WB
Recommended Dilution:	WB 1:500~2000, IF 1:100, FLOW 1:100, IHC: 1:150
Reactivity:	Human, Monkey, Mouse, Rat
Host:	Mouse
Isotype:	IgG2a
Clonality:	Monoclonal
Immunogen:	Full length human recombinant protein of human TUBB4 (NP_006078) produced in HEK293T cell.
Formulation:	Lyophilized powder (original buffer 1X PBS, pH 7.3, 8% trehalose)
Reconstitution Method:	For reconstitution, we recommend adding 100uL distilled water to a final antibody concentration of about 1 mg/mL. To use this carrier-free antibody for conjugation experiment, we strongly recommend performing another round of desalting process. (OriGene recommends Zeba Spin Desalting Columns, 7KMWCO from Thermo Scientific)
Purification:	Purified from mouse ascites fluids or tissue culture supernatant by affinity chromatography (protein A/G)
Conjugation:	Unconjugated
Storage:	Store at -20°C as received.
Stability:	Stable for 12 months from date of receipt.
Predicted Protein Size:	49.4 kDa
Gene Name:	tubulin beta 4A class IVa
Database Link:	<a href="#">NP_006078</a> <a href="#">Entrez Gene 22153 Mouse</a> <a href="#">Entrez Gene 29213 Rat</a> <a href="#">Entrez Gene 703019 Monkey</a> <a href="#">Entrez Gene 10382 Human</a> <a href="#">P04350</a>
Synonyms:	beta-5; DYT4; TUBB4

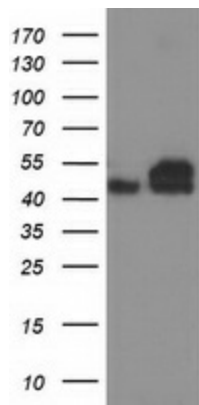


[View online »](#)

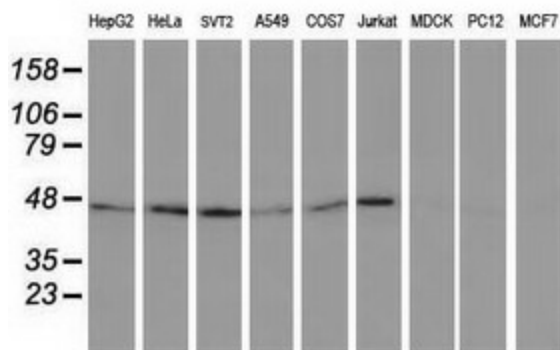
**Protein Families:** Druggable Genome

**Protein Pathways:** Gap junction, Pathogenic Escherichia coli infection

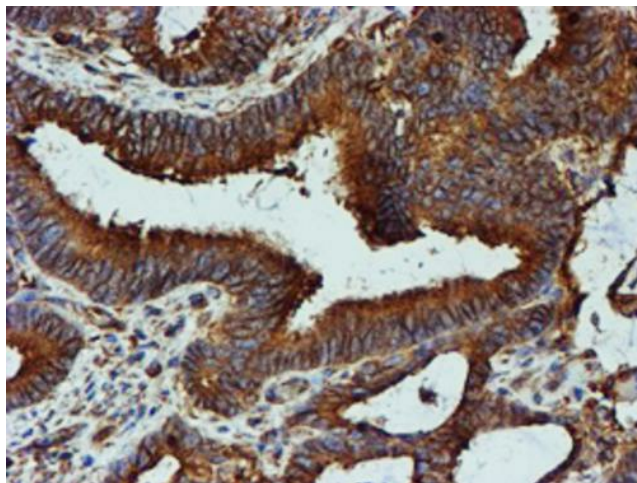
**Product images:**



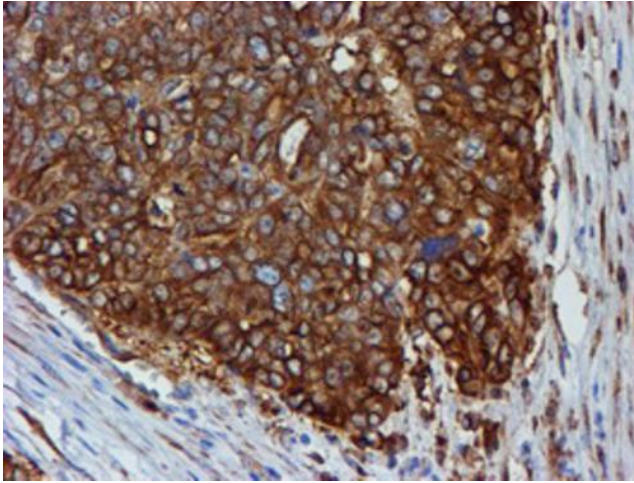
HEK293T cells were transfected with the pCMV6-ENTRY control (Left lane) or pCMV6-ENTRY TUBB4 ([RC203945], Right lane) cDNA for 48 hrs and lysed. Equivalent amounts of cell lysates (5 ug per lane) were separated by SDS-PAGE and immunoblotted with anti-TUBB4. Positive lysates [LY401833] (100ug) and [LC401833] (20ug) can be purchased separately from OriGene.



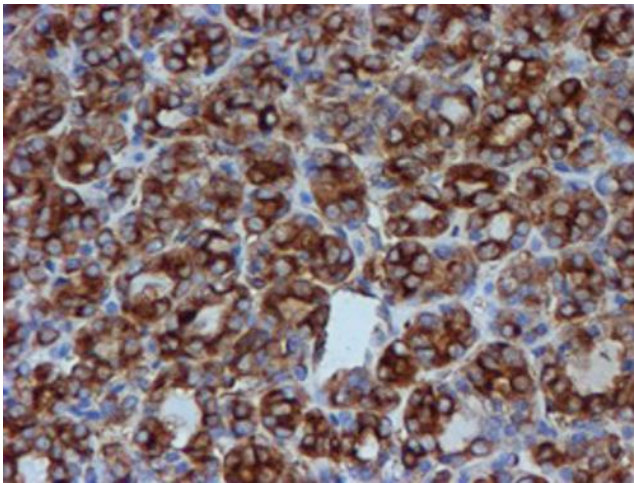
Western blot analysis of extracts (35ug) from 9 different cell lines by using anti-TUBB4 monoclonal antibody.



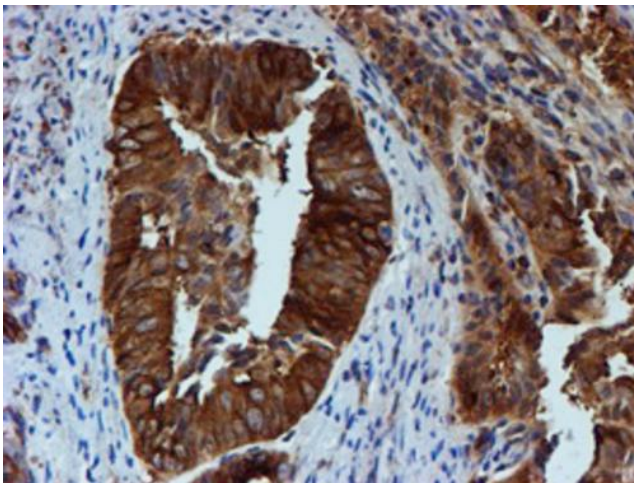
Immunohistochemical staining of paraffin-embedded Adenocarcinoma of Human colon tissue using anti-TUBB4 mouse monoclonal antibody. ([TA503110])



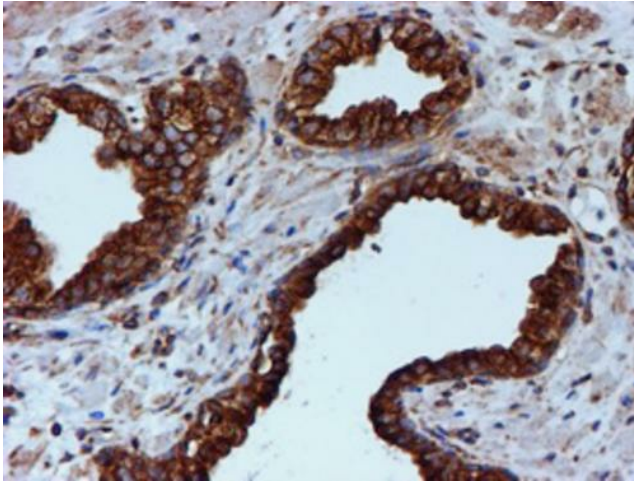
Immunohistochemical staining of paraffin-embedded Adenocarcinoma of Human ovary tissue using anti-TUBB4 mouse monoclonal antibody. ([TA503110])



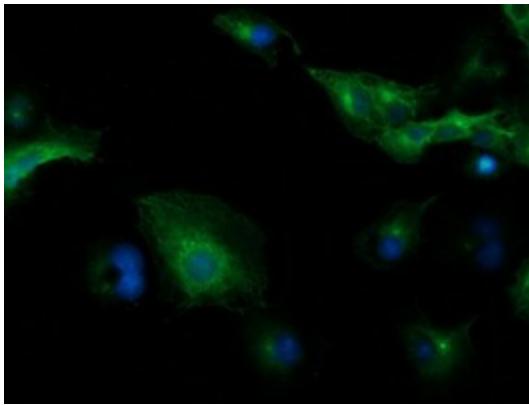
Immunohistochemical staining of paraffin-embedded Carcinoma of Human thyroid tissue using anti-TUBB4 mouse monoclonal antibody. ([TA503110])



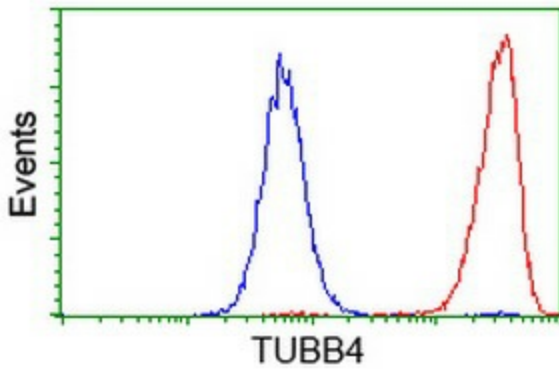
Immunohistochemical staining of paraffin-embedded Adenocarcinoma of Human endometrium tissue using anti-TUBB4 mouse monoclonal antibody. ([TA503110])



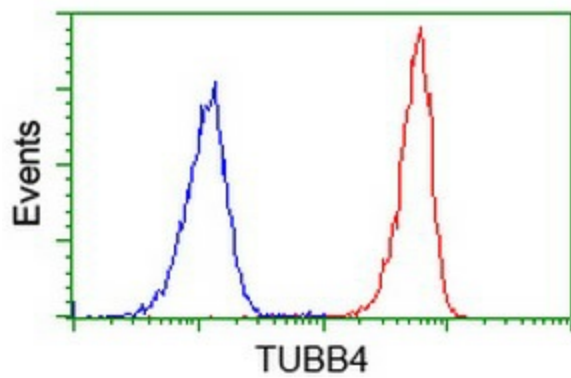
Immunohistochemical staining of paraffin-embedded Carcinoma of Human prostate tissue using anti-TUBB4 mouse monoclonal antibody. ([TA503110])



Anti-TUBB4 mouse monoclonal antibody ([TA503110]) immunofluorescent staining of COS7 cells transiently transfected by pCMV6-ENTRY TUBB4 ([RC203945]).



Flow cytometric Analysis of HeLa cells, using anti-TUBB4 antibody ([TA503110]), (Red), compared to a nonspecific negative control antibody (TA50011), (Blue).



Flow cytometric Analysis of Jurkat cells, using anti-TUBB4 antibody ([TA503110]), (Red), compared to a nonspecific negative control antibody (TA50011), (Blue).