

Product datasheet for **CF503100**

Spermine synthase (SMS) Mouse Monoclonal Antibody [Clone ID: OTI5E5]

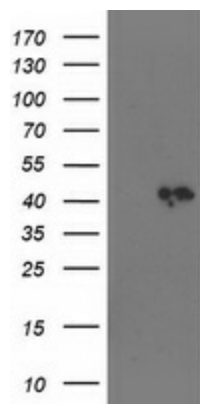
Product data:

Product Type:	Primary Antibodies
Clone Name:	OTI5E5
Applications:	FC, IF, WB
Recommended Dilution:	WB 1:500~2000, IF 1:100, FLOW 1:100
Reactivity:	Human, Mouse, Rat
Host:	Mouse
Isotype:	IgG2a
Clonality:	Monoclonal
Immunogen:	Full length human recombinant protein of human SMS (NP_004586) produced in HEK293T cell.
Formulation:	Lyophilized powder (original buffer 1X PBS, pH 7.3, 8% trehalose)
Reconstitution Method:	For reconstitution, we recommend adding 100uL distilled water to a final antibody concentration of about 1 mg/mL. To use this carrier-free antibody for conjugation experiment, we strongly recommend performing another round of desalting process. (OriGene recommends Zeba Spin Desalting Columns, 7KMWCO from Thermo Scientific)
Purification:	Purified from mouse ascites fluids or tissue culture supernatant by affinity chromatography (protein A/G)
Storage:	Store at -20°C as received.
Stability:	Stable for 12 months from date of receipt.
Predicted Protein Size:	41.1 kDa
Gene Name:	Homo sapiens spermine synthase (SMS), transcript variant 1, mRNA.
Database Link:	NP_004586 Entrez Gene 20603 MouseEntrez Gene 363469 RatEntrez Gene 6611 Human
Background:	The protein encoded by this gene belongs to the spermidine/spermine synthases family. This gene encodes an ubiquitous enzyme of polyamine metabolism. [provided by RefSeq]
Synonyms:	MRSR; SPMSY; SpS; SRS
Protein Pathways:	Arginine and proline metabolism, beta-Alanine metabolism, Cysteine and methionine metabolism, Glutathione metabolism, Metabolic pathways

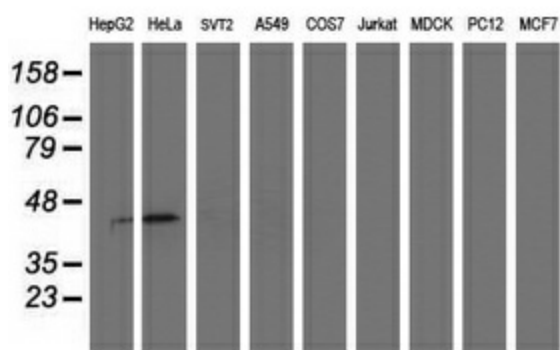


[View online »](#)

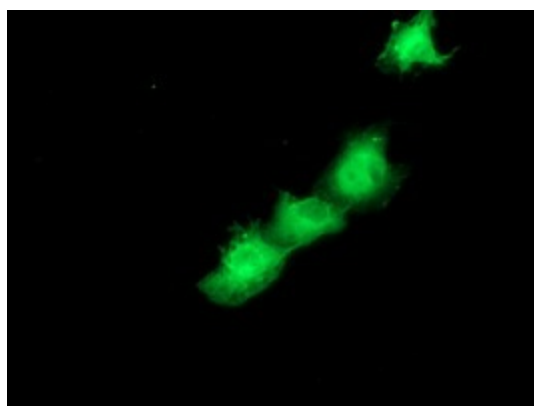
Product images:



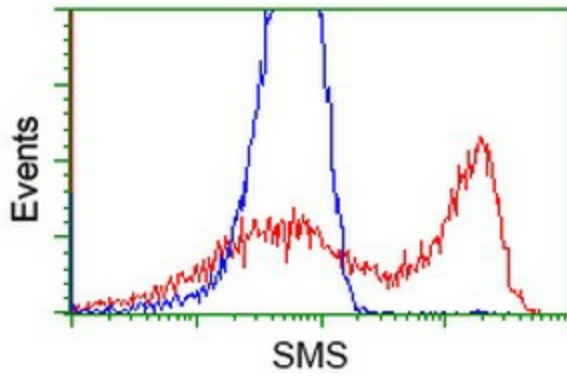
HEK293T cells were transfected with the pCMV6-ENTRY control (Left lane) or pCMV6-ENTRY SMS ([RC200619], Right lane) cDNA for 48 hrs and lysed. Equivalent amounts of cell lysates (5 ug per lane) were separated by SDS-PAGE and immunoblotted with anti-SMS. Positive lysates [LY417877] (100ug) and [LC417877] (20ug) can be purchased separately from OriGene.



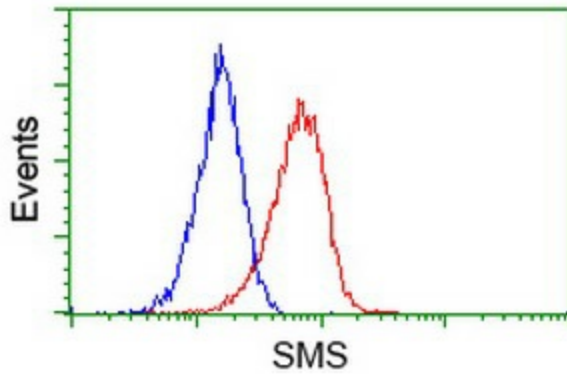
Western blot analysis of extracts (35ug) from 9 different cell lines by using anti-SMS monoclonal antibody.



Anti-SMS mouse monoclonal antibody ([TA503100]) immunofluorescent staining of COS7 cells transiently transfected by pCMV6-ENTRY SMS ([RC200619]).



HEK293T cells transfected with either [RC200619] overexpress plasmid (Red) or empty vector control plasmid (Blue) were immunostained by anti-SMS antibody ([TA503100]), and then analyzed by flow cytometry.



Flow cytometric Analysis of Jurkat cells, using anti-SMS antibody ([TA503100]), (Red), compared to a nonspecific negative control antibody, (Blue).