

Product datasheet for **CF503066**

GSPT2 Mouse Monoclonal Antibody [Clone ID: OTI2G9]

Product data:

Product Type:	Primary Antibodies
Clone Name:	OTI2G9
Applications:	FC, IF, WB
Recommended Dilution:	WB 1:2000, IF 1:100, FLOW 1:100
Reactivity:	Human, Mouse, Rat
Host:	Mouse
Isotype:	IgG1
Clonality:	Monoclonal
Immunogen:	Full length human recombinant protein of human GSPT2 (NP_060564) produced in HEK293T cell.
Formulation:	Lyophilized powder (original buffer 1X PBS, pH 7.3, 8% trehalose)
Reconstitution Method:	For reconstitution, we recommend adding 100uL distilled water to a final antibody concentration of about 1 mg/mL. To use this carrier-free antibody for conjugation experiment, we strongly recommend performing another round of desalting process. (OriGene recommends Zeba Spin Desalting Columns, 7KMWCO from Thermo Scientific)
Purification:	Purified from mouse ascites fluids or tissue culture supernatant by affinity chromatography (protein A/G)
Conjugation:	Unconjugated
Storage:	Store at -20°C as received.
Stability:	Stable for 12 months from date of receipt.
Predicted Protein Size:	68.7 kDa
Gene Name:	G1 to S phase transition 2
Database Link:	NP_060564 Entrez Gene 14853 Mouse Entrez Gene 501582 Rat Entrez Gene 23708 Human Q8IYD1



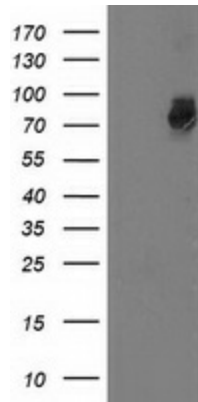
[View online »](#)

Background:

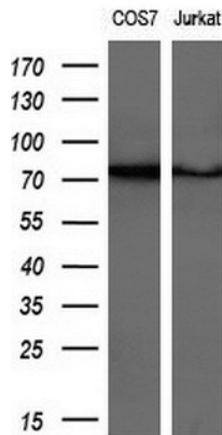
This gene encodes a GTPase that belongs to the GTP-binding elongation factor family. The encoded protein is a polypeptide release factor that complexes with eukaryotic peptide chain release factor 1 to mediate translation termination. This protein may also be involved in mRNA stability. COMPLETENESS: complete on the 3' end.

Synonyms:

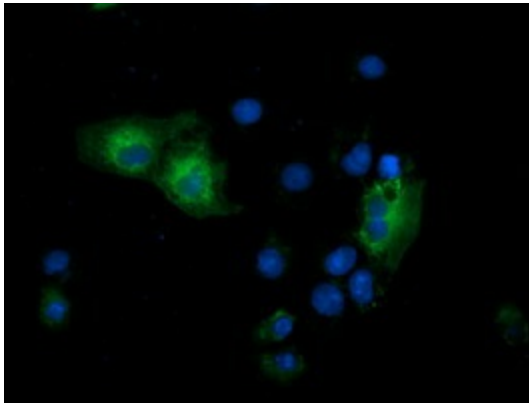
ERF3B; GST2

Product images:


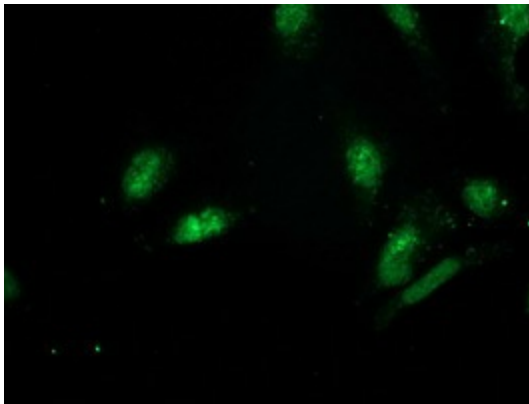
HEK293T cells were transfected with the pCMV6-ENTRY control (Cat# [PS100001], Left lane) or pCMV6-ENTRY GSPT2 (Cat# [RC206259], Right lane) cDNA for 48 hrs and lysed. Equivalent amounts of cell lysates (5 ug per lane) were separated by SDS-PAGE and immunoblotted with anti-GSPT2 (Cat# [TA503066]). Positive lysates [LY402649] (100ug) and [LC402649] (20ug) can be purchased separately from OriGene.



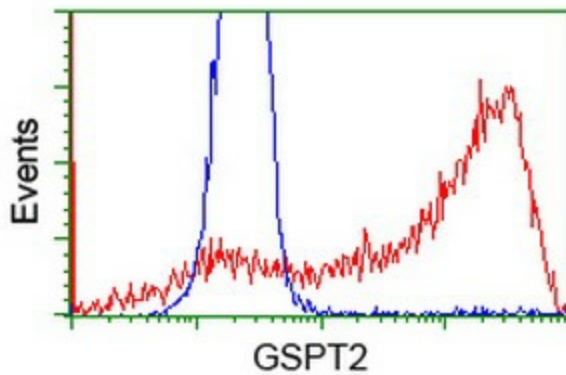
Western blot analysis of extracts (10ug) from 2 different cell lines by using anti-GSPT2 monoclonal antibody (1:200).



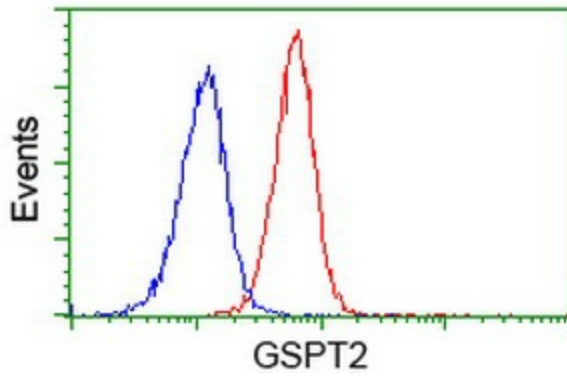
Anti-GSPT2 mouse monoclonal antibody ([TA503066]) immunofluorescent staining of COS7 cells transiently transfected by pCMV6-ENTRY GSPT2 ([RC206259]).



Immunofluorescent staining of HeLa cells using anti-GSPT2 mouse monoclonal antibody ([TA503066]).



HEK293T cells transfected with either [RC206259] overexpress plasmid (Red) or empty vector control plasmid (Blue) were immunostained by anti-GSPT2 antibody ([TA503066]), and then analyzed by flow cytometry.



Flow cytometric Analysis of Jurkat cells, using anti-GSPT2 antibody ([TA503066]), (Red), compared to a nonspecific negative control antibody, (Blue).