

## Product datasheet for **CF503058**

### Nudel (NDEL1) Mouse Monoclonal Antibody [Clone ID: OTI1G10]

#### Product data:

Product Type:	Primary Antibodies
Clone Name:	OTI1G10
Applications:	FC, WB
Recommended Dilution:	WB 1:500~2000, FLOW 1:100
Reactivity:	Human, Dog, Rat, Monkey, Mouse
Host:	Mouse
Isotype:	IgG2b
Clonality:	Monoclonal
Immunogen:	Full length human recombinant protein of human NDEL1 (NP_001020750) produced in HEK293T cell.
Formulation:	Lyophilized powder (original buffer 1X PBS, pH 7.3, 8% trehalose)
Reconstitution Method:	For reconstitution, we recommend adding 100uL distilled water to a final antibody concentration of about 1 mg/mL. To use this carrier-free antibody for conjugation experiment, we strongly recommend performing another round of desalting process. (OriGene recommends Zeba Spin Desalting Columns, 7KMWCO from Thermo Scientific)
Purification:	Purified from mouse ascites fluids or tissue culture supernatant by affinity chromatography (protein A/G)
Conjugation:	Unconjugated
Storage:	Store at -20°C as received.
Stability:	Stable for 12 months from date of receipt.
Predicted Protein Size:	36.9 kDa
Gene Name:	nudE neurodevelopment protein 1 like 1
Database Link:	<a href="#">NP_001020750</a> <a href="#">Entrez Gene 83431 Mouse</a> <a href="#">Entrez Gene 170845 Rat</a> <a href="#">Entrez Gene 489495 Dog</a> <a href="#">Entrez Gene 721973 Monkey</a> <a href="#">Entrez Gene 81565 Human</a> <a href="#">Q9GZM8</a>



[View online »](#)

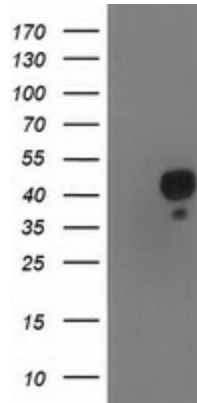
**Background:**

This gene encodes a thiol-activated peptidase that is phosphorylated in M phase of the cell cycle. Phosphorylation regulates the cell cycle-dependent distribution of this protein, with a fraction of the protein bound strongly to centrosomes in interphase and localized to mitotic spindles in early M phase. Overall, this protein plays a role in nervous system development. Alternate transcriptional splice variants, encoding different isoforms, have been characterized. [provided by RefSeq]

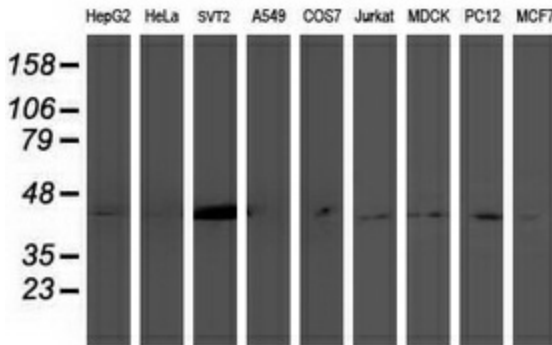
**Synonyms:**

EOPA; MITAP1; NDE1L1; NDE2; NUDEL

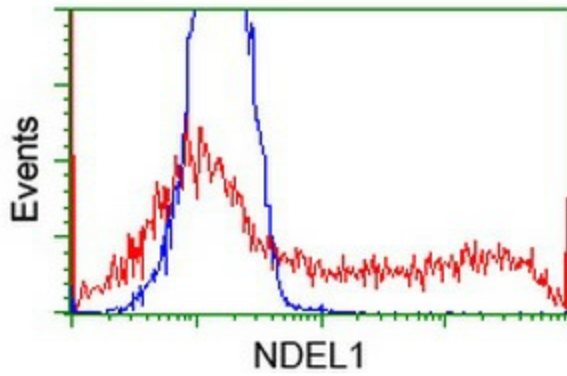
**Product images:**



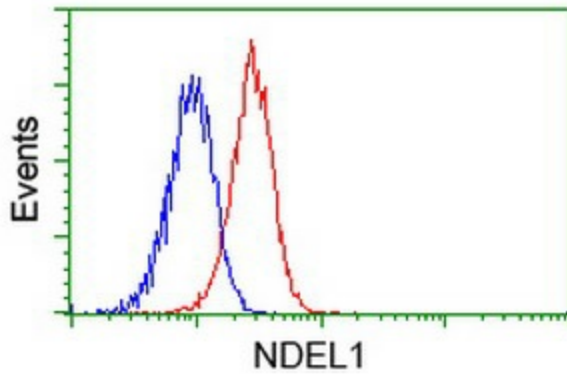
HEK293T cells were transfected with the pCMV6-ENTRY control (Left lane) or pCMV6-ENTRY NDEL1 ([RC212323], Right lane) cDNA for 48 hrs and lysed. Equivalent amounts of cell lysates (5 ug per lane) were separated by SDS-PAGE and immunoblotted with anti-NDEL1. Positive lysates [LY422448] (100ug) and [LC422448] (20ug) can be purchased separately from OriGene.



Western blot analysis of extracts (35ug) from 9 different cell lines by using anti-NDEL1 monoclonal antibody.



HEK293T cells transfected with either [RC212323] overexpress plasmid (Red) or empty vector control plasmid (Blue) were immunostained by anti-NDEL1 antibody ([TA503058]), and then analyzed by flow cytometry.



Flow cytometric Analysis of Jurkat cells, using anti-NDEL1 antibody ([TA503058]), (Red), compared to a nonspecific negative control antibody, (Blue).