

## Product datasheet for **CF503010**

### **AK3L1 (AK4) Mouse Monoclonal Antibody [Clone ID: OTI7E5]**

#### **Product data:**

<b>Product Type:</b>	Primary Antibodies
<b>Clone Name:</b>	OTI7E5
<b>Applications:</b>	FC, IF, WB
<b>Recommended Dilution:</b>	WB 1:2000, IF 1:100, FLOW 1:100
<b>Reactivity:</b>	Human, Mouse, Rat
<b>Host:</b>	Mouse
<b>Isotype:</b>	IgG1
<b>Clonality:</b>	Monoclonal
<b>Immunogen:</b>	Full length human recombinant protein of human AK4 (NP_037542) produced in HEK293T cell.
<b>Formulation:</b>	Lyophilized powder (original buffer 1X PBS, pH 7.3, 8% trehalose)
<b>Reconstitution Method:</b>	For reconstitution, we recommend adding 100uL distilled water to a final antibody concentration of about 1 mg/mL. To use this carrier-free antibody for conjugation experiment, we strongly recommend performing another round of desalting process. (OriGene recommends Zeba Spin Desalting Columns, 7KMWCO from Thermo Scientific)
<b>Purification:</b>	Purified from mouse ascites fluids or tissue culture supernatant by affinity chromatography (protein A/G)
<b>Conjugation:</b>	Unconjugated
<b>Storage:</b>	Store at -20°C as received.
<b>Stability:</b>	Stable for 12 months from date of receipt.
<b>Predicted Protein Size:</b>	25.1 kDa
<b>Gene Name:</b>	adenylate kinase 4
<b>Database Link:</b>	<a href="#">NP_037542</a> <a href="#">Entrez Gene 11639 Mouse</a> <a href="#">Entrez Gene 29223 Rat</a> <a href="#">Entrez Gene 205 Human</a> <a href="#">P27144</a>



[View online »](#)

**Background:**

This gene encodes a member of the adenylate kinase family of enzymes. The encoded protein is localized to the mitochondrial matrix. Adenylate kinases regulate the adenine and guanine nucleotide compositions within a cell by catalyzing the reversible transfer of phosphate group among these nucleotides. Five isozymes of adenylate kinase have been identified in vertebrates. Expression of these isozymes is tissue-specific and developmentally regulated. A pseudogene for this gene has been located on chromosome 17. Three transcript variants encoding the same protein have been identified for this gene. Sequence alignment suggests that the gene defined by NM\_013410, NM\_203464, and NM\_001005353 is located on chromosome 1. [provided by RefSeq]

**Synonyms:**

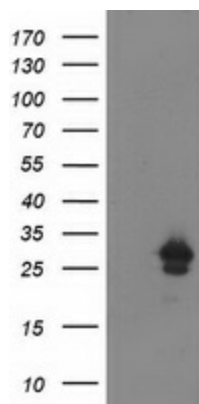
AK3; AK3L1; AK3L2; AK 4

**Protein Families:**

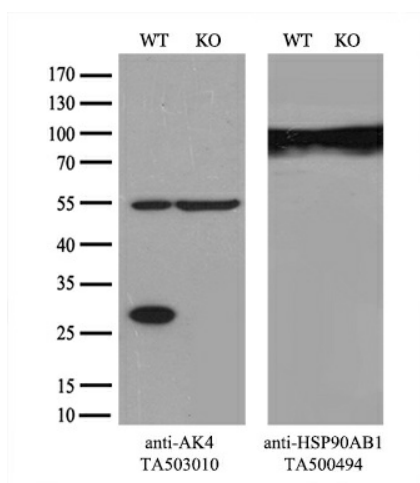
Druggable Genome

**Protein Pathways:**

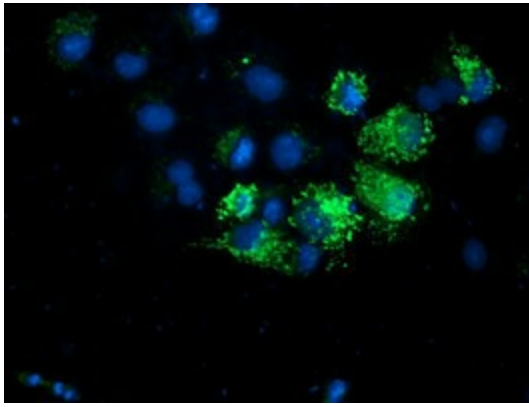
Metabolic pathways, Purine metabolism

**Product images:**


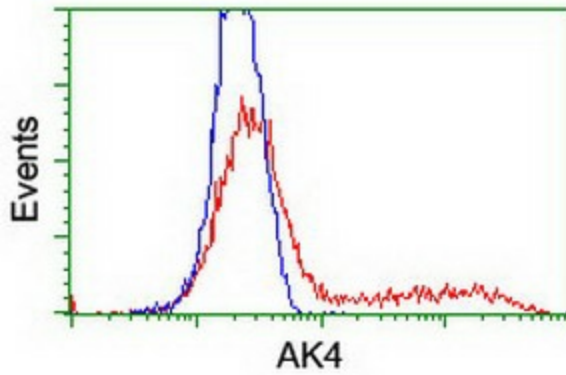
HEK293T cells were transfected with the pCMV6-ENTRY control (Left lane) or pCMV6-ENTRY AK4 ([RC220572], Right lane) cDNA for 48 hrs and lysed. Equivalent amounts of cell lysates (5 ug per lane) were separated by SDS-PAGE and immunoblotted with anti-AK4. Positive lysates [LY402259] (100ug) and [LC402259] (20ug) can be purchased separately from OriGene.



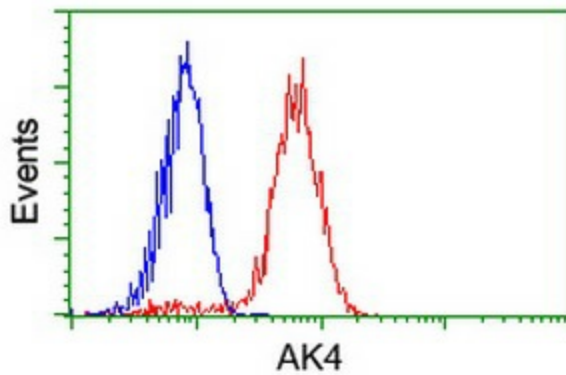
Equivalent amounts of cell lysates (10 ug per lane) of wild-type HeLa cells (WT, Cat# LC810HELA) and AK4-Knockout HeLa cells (KO, Cat# [LC834937]) were separated by SDS-PAGE and immunoblotted with anti-AK4 monoclonal antibody [TA503010] (1:500). Then the blotted membrane was stripped and reprobed with anti-HSP90 antibody as a loading control.



Anti-AK4 mouse monoclonal antibody ([TA503010]) immunofluorescent staining of COS7 cells transiently transfected by pCMV6-ENTRY AK4 ([RC220572]).



HEK293T cells transfected with either [RC220572] overexpress plasmid (Red) or empty vector control plasmid (Blue) were immunostained by anti-AK4 antibody ([TA503010]), and then analyzed by flow cytometry.



Flow cytometric Analysis of HeLa cells, using anti-AK4 antibody ([TA503010]), (Red), compared to a nonspecific negative control antibody, (Blue).